

4

3

2

1

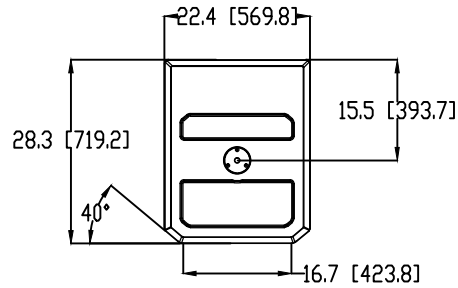
THESE DRAWINGS AND SPECIFICATIONS ARE THE PROPERTY OF JBL INCORPORATED. THEY ARE ISSUED IN STRICT CONFIDENCE AND SHALL NOT BE REPRODUCED OR USED AS THE BASIS FOR MANUFACTURE OR APPARATUS WITHOUT WRITTEN PERMISSION.

ALL MATERIAL SPECIFIED ON THIS DRAWING SHALL COMPLY WITH EUROPEAN DIRECTIVE 2002/95/EC. **RoHS**

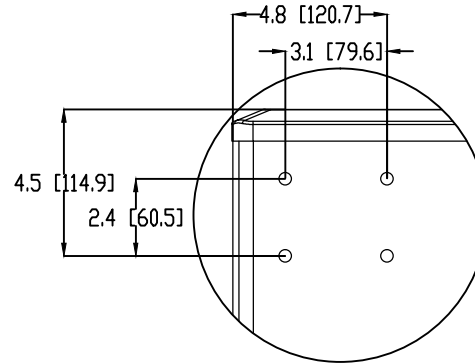
REVISIONS						
CHG	LTR	DESCRIPTION	DRPT	D/C	DATE	APPR
06882	A	RELEASE TO MARKETING	TP			

NOTES: (UNLESS OTHERWISE SPECIFIED)

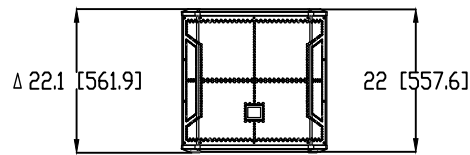
1. COMPONENTS: LF - 1X 2242H 18" DIA. WOOFER
 2. INPUT CONNECTORS: 2 NEUTRIK NL4 CONNECTORS
 3. OPERATING MODE: FULLY PASSIVE
 4. GRILLE: 14 GA. PERFORATED CRS, POWDER COATED BLACK WITH BLACK CLOTH BACKING
 5. MATERIALS: 18MM (.71") 13-PLY BIRCH/POPLAR PLYWOOD.
 6. FINISH: BLACK DURAFLEX
 7. WEIGHT: 45 Kg (100 LBS)
 9. MOUNTING "•" 1 TOTAL:
1 M20 THREAD PATTERN - TOP PANEL
- Δ DIMENSION TAKEN FROM FEET



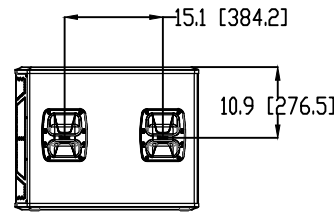
TOP



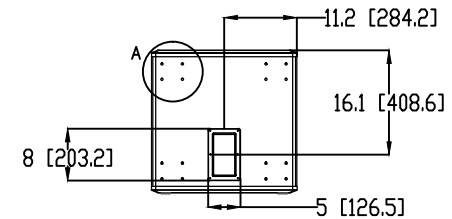
DETAIL A



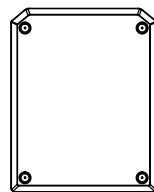
FRONT



RIGHT



REAR



BOTTOM

TOLERANCES
(UNLESS OTHERWISE SPECIFIED)
X.XX ± .003 INCH
X.X ± .125 INCH
ANGULAR TOLERANCE OF 0°±30'
FRACTIONAL DIMENSIONS ± 1/32
* DIMENSIONS ARE INCHES
* ALL DIMENSIONS ARE FINISHED DIMENSIONS
* DO NOT SCALE DRAWING

JBL PROFESSIONAL A Harman International Company Northridge, California 91329 U.S.A.			
TITLE CUSTOMER DRAWING: STXB16S			
SIZE A	DRAWING NO. 1000107363	REV A	
SCALE NTS	SHEET 1	OF 1	