



MARQUIS  
DANCE CLUB SERIES

# MD1 Super Tweeter Loudspeaker

Professional Series

## Key Features:

- ▶ Dual JBL Selenium ST400 Super Tweeters
- ▶ Extremely high sensitivity
- ▶ Low Distortion
- ▶ High fidelity
- ▶ High temperature voice coil for durability and reliability

## Applications:

- ▶ Sophisticated dance clubs
- ▶ Anywhere dramatic use of super high-frequency is desired

JBL's Marquis Dance Club Series is a state-of-the-art family of loudspeaker systems designed specifically for the Dance Club Market. MD1 is an ultra high-frequency module consisting of dual JBL Selenium ST400 Super Tweeters for superior high-frequency response and is intended to be used in conjunction with the MD2 mid-high system, MD3 low-frequency system, and MD7 ultra high-output subwoofer system. When all elements are combined they complete a high energy five-way dance system with unprecedented fidelity, clarity, and breathtaking purity.



## Specifications:

### System:

Frequency Range (-10 dB):	5.5 kHz - 20 kHz
Frequency Response ( $\pm 3$ dB):	6.5 kHz - 20 kHz
Coverage Pattern:	Dual 40° x 40°
Directivity Factor (Q):	33
Directivity Index (DI):	15.2 dB
Crossover Frequency:	6 kHz to 10 kHz
System Impedance:	4 ohms
System Power Rating (IEC) <sup>1</sup> :	130 W (520 W peak) 2 hrs
Long-Term System Power Rating (IEC) <sup>2</sup> :	80 W (320 W peak), 100 hrs
Maximum SPL (1m) <sup>3</sup> :	129 dB continuous average (135 dB peak)
Sensitivity <sup>4</sup> :	111 dB SPL, 2.83V @ 1m (3.3 ft)

### Transducers:

<u>Ultra High-Frequency Driver:</u>	2 x JBL Selenium ST400 Super Tweeters
Nominal Impedance:	2 x 8 ohms

### Physical:

Enclosure:	Trapezoidal, 16 mm (5/8 in) exterior grade 11-ply Finnish birch plywood
Suspension Attachment:	10 M10 points
Finish:	Black DuraFlex™ finish
Input Connectors:	Neutrik Speakon® NL4 (2 wired in parallel), plus CE-compliant covered barrier strip terminals. Barrier terminals accept up to 5.2 sq mm (10 AGW) wire or max width 9 mm (.375 in) spade lugs. NL4's +1/-1 in parallel with barrier strip (+2/-2 loop through).
Dimensions (H x W x D):	184.2 x 421.3 x 305.8 mm (7.2 x 16.6 x 12 in)
Net Weight:	8.2 kg (18.0 lb)
Optional Accessories:	M10 x 35 mm forged shoulder eyebolts with washers

<sup>1</sup> IEC shaped pink noise, 6 dB crest factor, 2 hour duration, based on minimum impedance, with recommended active tuning.

<sup>2</sup> IEC shaped pink noise, 6 dB crest factor, 100 hour duration, based on minimum impedance, with recommended active tuning.

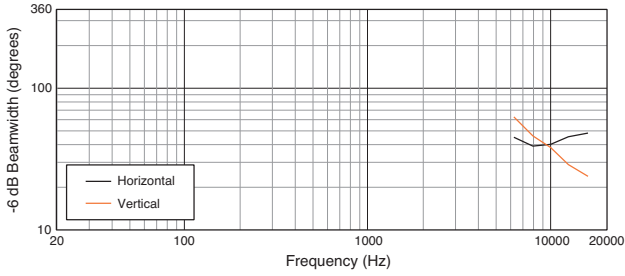
<sup>3</sup> Calculated based on system sensitivity and 2-hour power rating rating exclusive of power compression.

<sup>4</sup> Anechoic sensitivity in free field, no additional sensitivity gain from boundary loading.

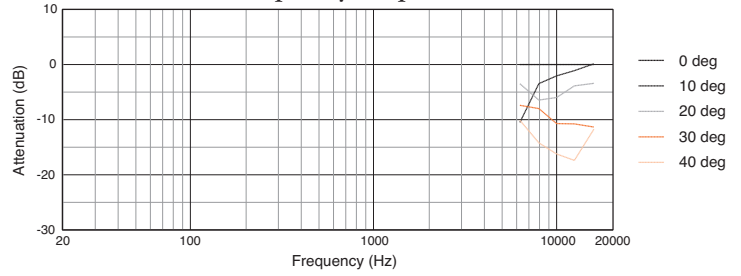
JBL continually engages in research related to product improvement. Changes introduced into existing products without notice are an expression of that philosophy.

# ► MD1 Super Tweeter Loudspeaker

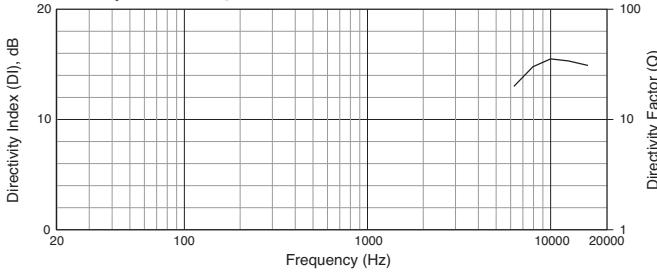
**Beamwidth**



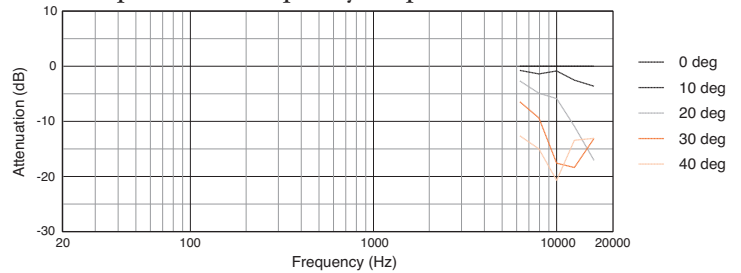
**Horizontal Off-Axis Frequency Response**



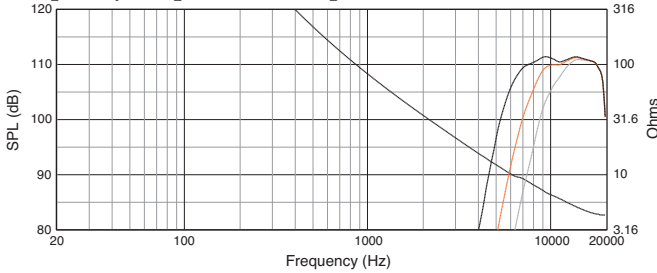
**Directivity Index, Q**



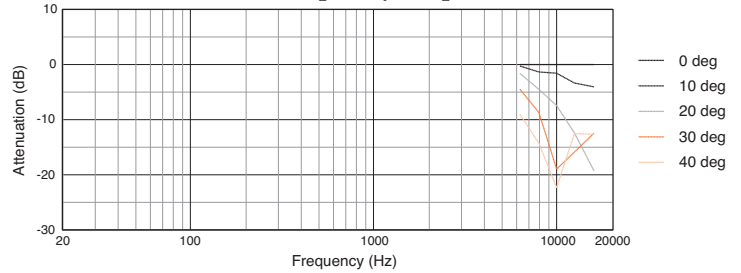
**Vertical Up Off-Axis Frequency Response**



**Frequency Response and Impedance**

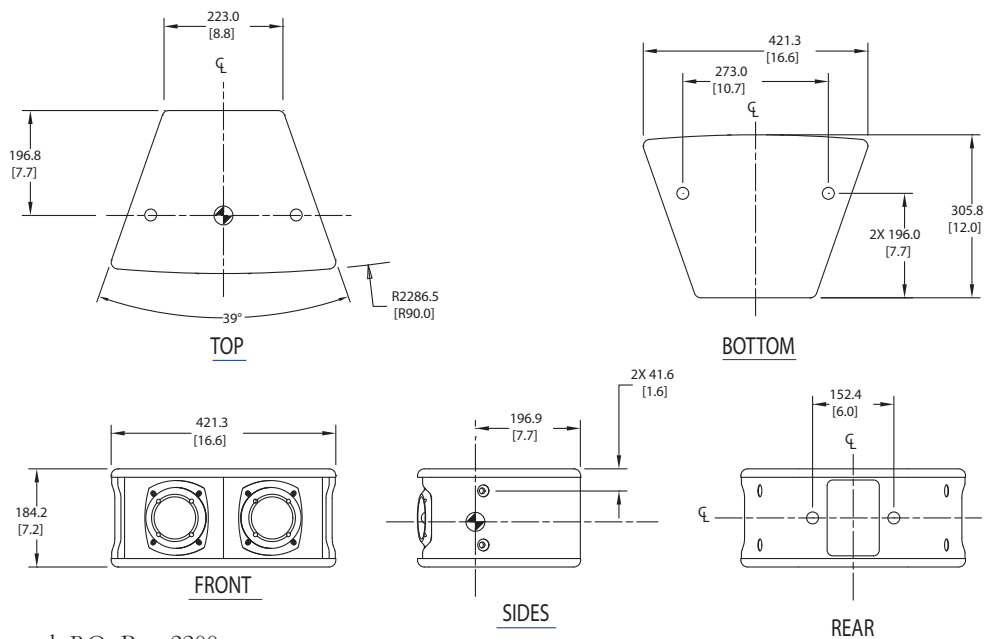


**Vertical Down Off-Axis Frequency Response**



Measurements obtained with recommended active tuning. Graphs are from unaltered measured data.

## Dimensions



JBL Professional  
8500 Balboa Boulevard, P.O. Box 2200  
Northridge, California 91329 U.S.A.

© Copyright 2012 JBL Professional  
www.jblpro.com

SSMD1  
5018060  
CRP  
02/12