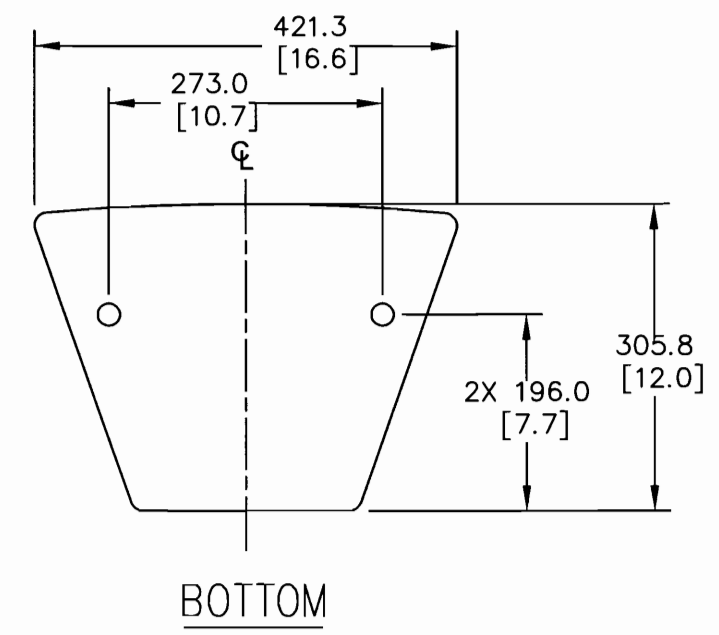
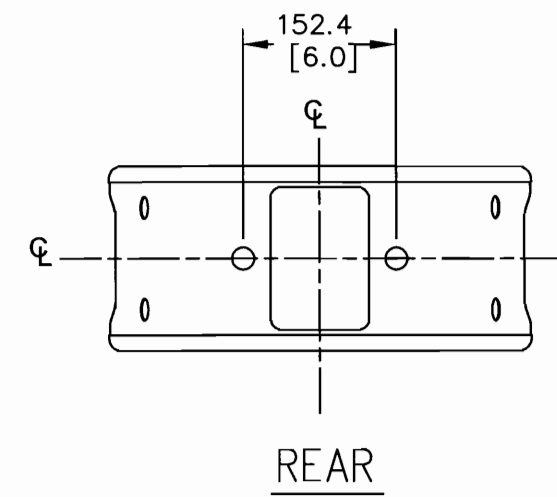
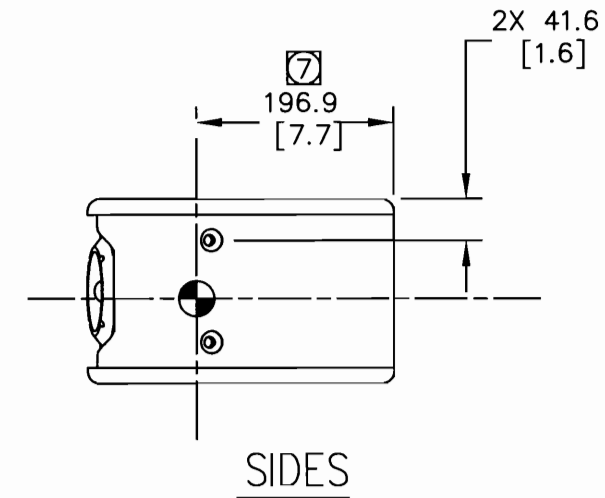
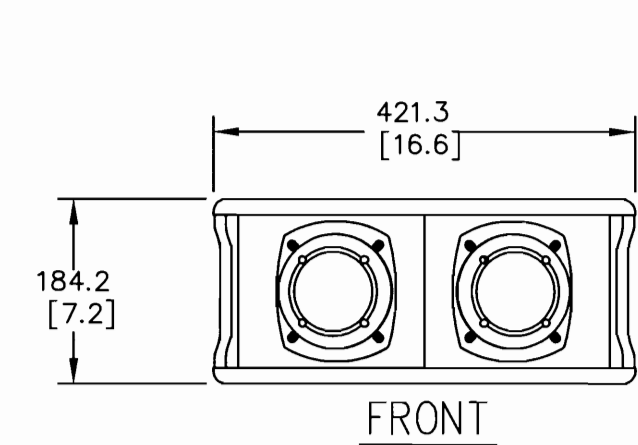
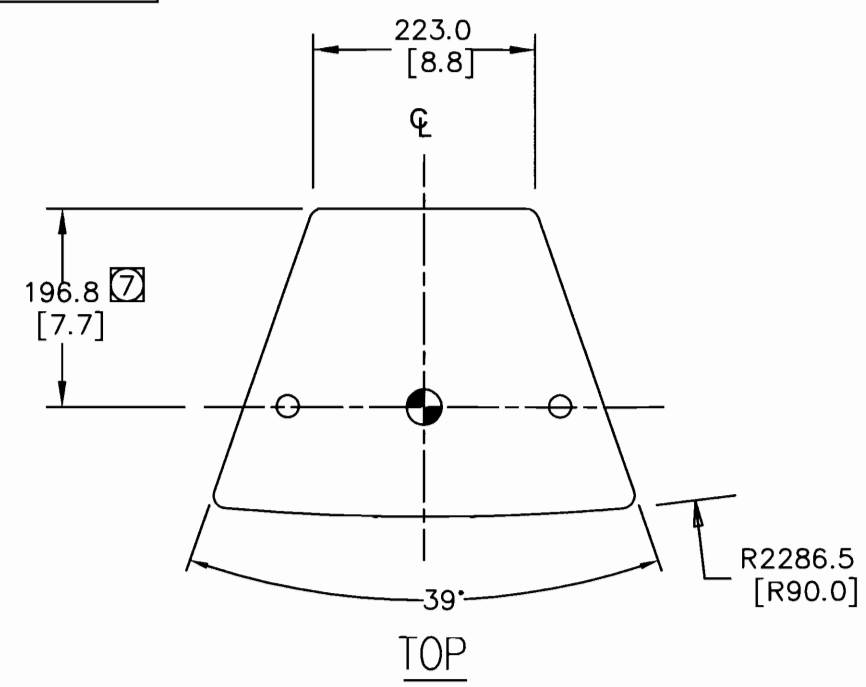


THESE DRAWINGS AND SPECIFICATIONS ARE THE PROPERTY OF JBL INCORPORATED. THEY ARE ISSUED IN STRICT CONFIDENCE AND SHALL NOT BE REPRODUCED OR USED AS THE BASIS FOR MANUFACTURE OR APPARATUS WITHOUT WRITTEN PERMISSION.

ALL MATERIAL SPECIFIED ON THIS DRAWING SHALL COMPLY WITH EUROPEAN DIRECTIVE 2002/95/EC. **RoHS**

| REVISIONS | | | | | | |
|-----------|-----|----------------------|------|------|----------|------|
| CHG | LTR | DESCRIPTION | DRFT | D.G. | DATE | APPR |
| 00648 | A | RELEASE TO MARKETING | TH | | 11/17/11 | CH |



- 7 INDICATED DIMENSIONS ARE TO CENTER OF GRAVITY (CG)
6. WEIGHT: 8.2 Kg(18.0 LBS).
5. SUSPENSION POINTS: M10 – THREADED SUSPENSION POINTS. 2X TOP, 2X BOTTOM, 2X REAR, 2X LEFT, 2X RIGHT
4. COMPONENTS: 2X ST400 TRIO
3. INPUT CONNECTORS: 2 NEUTRIK NL4 AND 1 BARRIER STRIP WITH 2 TERMINALS, ALL 3 CONNECTED IN PARALLEL.
2. MATERIALS: 15.8 MM BIRCH PLYWOOD.
1. FINISH: BLACK DURAFLEX

NOTES: (UNLESS OTHERWISE SPECIFIED)

TOLERANCES
(UNLESS OTHERWISE SPECIFIED)

X.XX ± .063 INCH
X.X ± .125 INCH
ANGULAR TOLERANCE OF 0°±30°
FRACTIONAL DIMENSIONS ± 1/32

- DIMENSIONS ARE INCHES
- ALL DIMENSIONS ARE FINISHED DIMENSIONS
- DO NOT SCALE DRAWING

| | | |
|---|-----------------------|----------|
| JBL PROFESSIONAL A Harman International Company Northridge, California 91329 U.S.A. | | |
| TITLE CUSTOMER DRAWING: MD1 | | |
| SIZE A | DRAWING NO. 446324 | REV A |
| SCALE NTS | SHEET 1 OF 1 | |