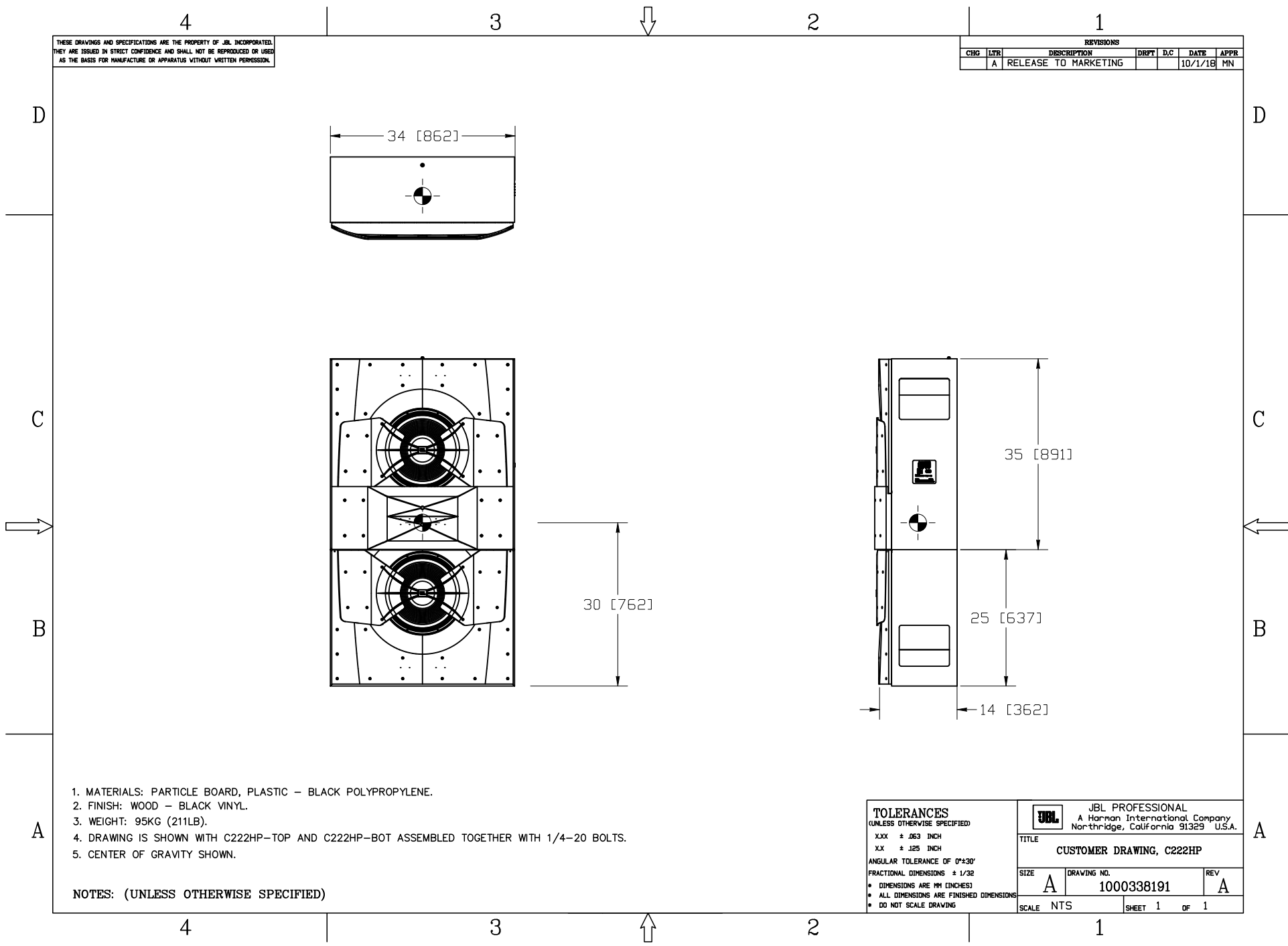


THESE DRAWINGS AND SPECIFICATIONS ARE THE PROPERTY OF JBL INCORPORATED. THEY ARE ISSUED IN STRICT CONFIDENCE AND SHALL NOT BE REPRODUCED OR USED AS THE BASIS FOR MANUFACTURE OR APPARATUS WITHOUT WRITTEN PERMISSION.

REVISIONS						
CHG	LTR	DESCRIPTION	DRFT	D/C	DATE	APPR
	A	RELEASE TO MARKETING			10/1/18	MN



1. MATERIALS: PARTICLE BOARD, PLASTIC - BLACK POLYPROPYLENE.
2. FINISH: WOOD - BLACK VINYL.
3. WEIGHT: 95KG (211LB).
4. DRAWING IS SHOWN WITH C222HP-TOP AND C222HP-BOT ASSEMBLED TOGETHER WITH 1/4"-20 BOLTS.
5. CENTER OF GRAVITY SHOWN.

NOTES: (UNLESS OTHERWISE SPECIFIED)

TOLERANCES (UNLESS OTHERWISE SPECIFIED) .XXX ± .063 INCH .XX ± .125 INCH .X ± .250 INCH ANGULAR TOLERANCE OF 0°±30' FRACTIONAL DIMENSIONS ± 1/32 • DIMENSIONS ARE IN INCHES • ALL DIMENSIONS ARE FINISHED DIMENSIONS • DO NOT SCALE DRAWING	JBL JBL PROFESSIONAL A Harman International Company Northridge, California 91329 U.S.A.		
	TITLE CUSTOMER DRAWING, C222HP		
	SIZE A	DRAWING NO. 1000338191	REV A
	SCALE NTS		SHEET 1 OF 1