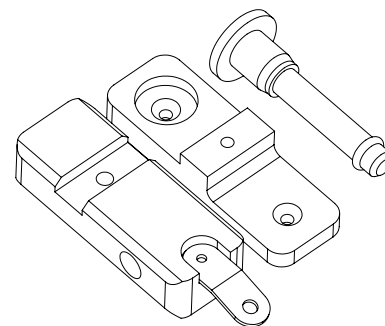


VTX-LZ-V25-MB | Laser Mount Bracket for VTX V25

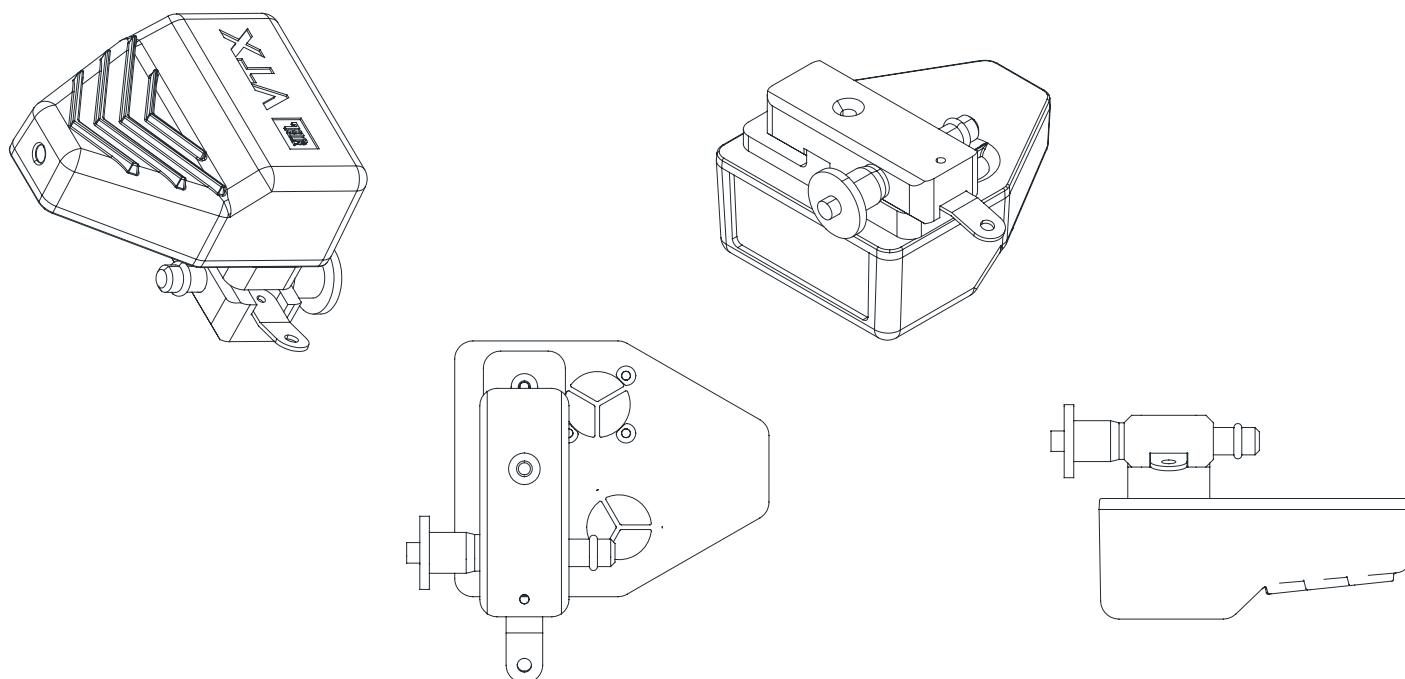
Features:

- Mount Bracket to attach VTX-LZ to VTX V25
- Compatible with VTX V25, V25-II and V25-II-CS
- VTX-LZ and VTX-LZ-PS sold separately



Description:

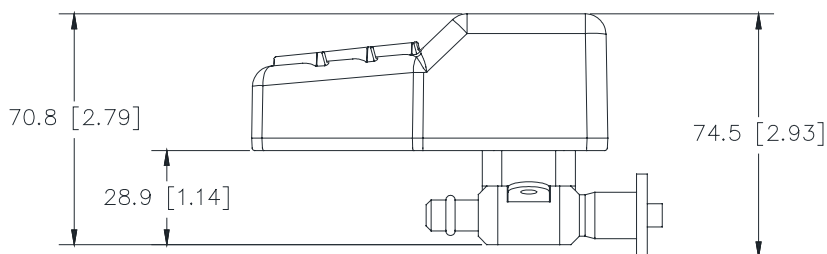
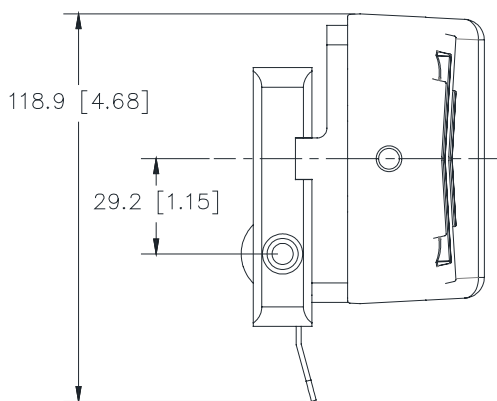
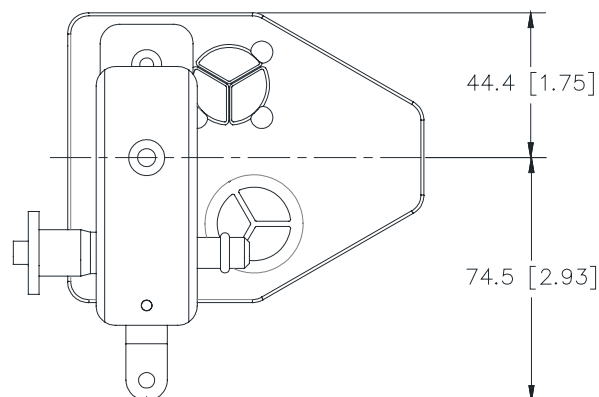
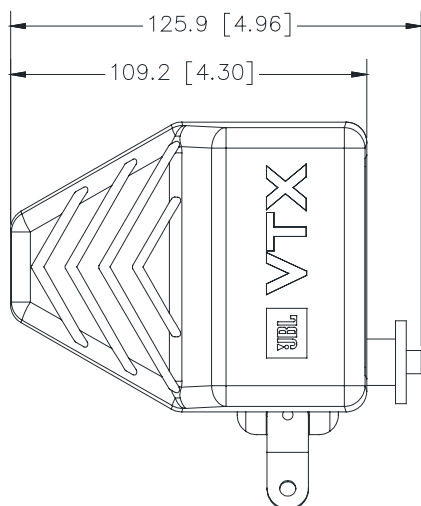
The VTX-LZ-V25-MB mount bracket has been designed to securely attach VTX-LZ units to VTX V25, VTX V25-II or VTX V25-II-CS line array systems. When properly mounted on a VTX line array system, the VTX-LZ laser provides a visual reference to confirm on-axis vertical site angle aiming (focus) of the array. Coverage simulations based on JBL Line Array Calculator II software (LAC-II) indicate the desired location where the laser should aim and the VTX-LZ laser provides visual confirmation to assist with actual installation in the field. The VTX-LZ-V25-MB can be attached to either the left or right side of a V25 enclosure.



Included:

- 1 x VTX-LZ-V25-MB
- 1 x Quick Release Pin with lanyard

Dimensions:



Specifications:

VTX-LZ / VTX-LZ-V25-MB

Construction: Black ABS and Aluminum

Laser Color: Green

Connectors: Neutrik 3-Pin XLR

Dimensions (H x W x D): 125.9 mm x 118.9 mm x 74.5 mm
(4.96 in x 4.68 in x 2.93 in)

Net Weight MB: 0.15 kg (0.33 lbs)
Net Weight MB + LZ: 0.39 kg (0.86 lbs)