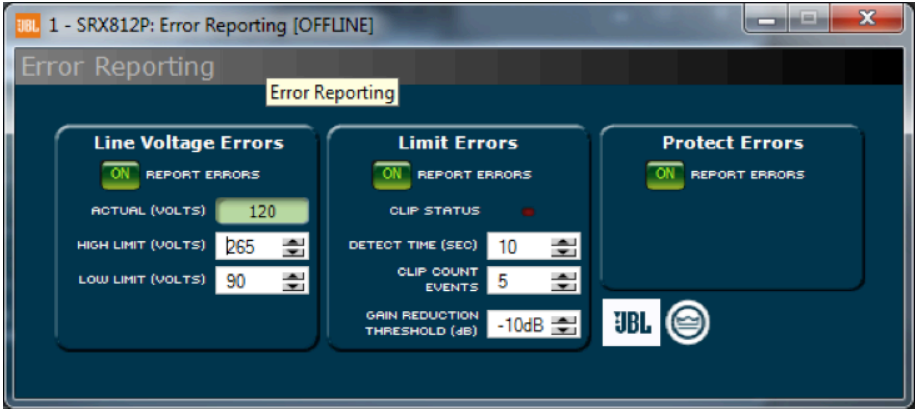


# Error Reporting – JBL SRX800 Series



The Error Reporting Panel allows for the adjustment and monitoring of errors that occur.

## Line Voltage Errors

The Line Voltage section allows you to monitor the line voltage in real time. You may also set a high and low limit. You may select to have voltage levels outside of these bounds reported to you via error reporting

### Actual Volts

Actual Line Voltage is displayed in the Monitor area.

### High/Low Limits

You can set the line voltage limits by using the numeric spin boxes. You select a voltage percentage as maximum voltage and minimum voltage. This protection is in addition to the protection built into the amplifier.

### Report Errors

Click the “Report Errors” button in this area so that it is on if you want to have any voltage out-of-range events reported to you through the [Audio Architect Event Log](#).

# Limit Errors

## Detect Time

With the time control, one sets the number of seconds (1 to 10) during which the number of Limit error events are counted for possible error reporting.

## Count Limit Events

The Count spinner box lets you set number of Limit events within the defined time allowed before an error is generated between one and one hundred.

## Report Errors

You can choose to be informed through error reporting when an excessive number of Limit events occur over a unit of time in an amplifier. Report Errors will send a message to the [Audio Architect Event Log](#) indicating that there is a problem.

# Protect Errors

## Report Errors

You can choose to be informed through error reporting when any protect events occur. Report Errors will send a message to the [Audio Architect Event Log](#) indicating that there is a problem.



**SRX800**  
S E R I E S



JBL Professional  
8500 Balboa Boulevard, P.O. Box 2200  
Northridge, California 91329 U.S.A.

© Copyright 2015 JBL Professional

[www.jblpro.com](http://www.jblpro.com)