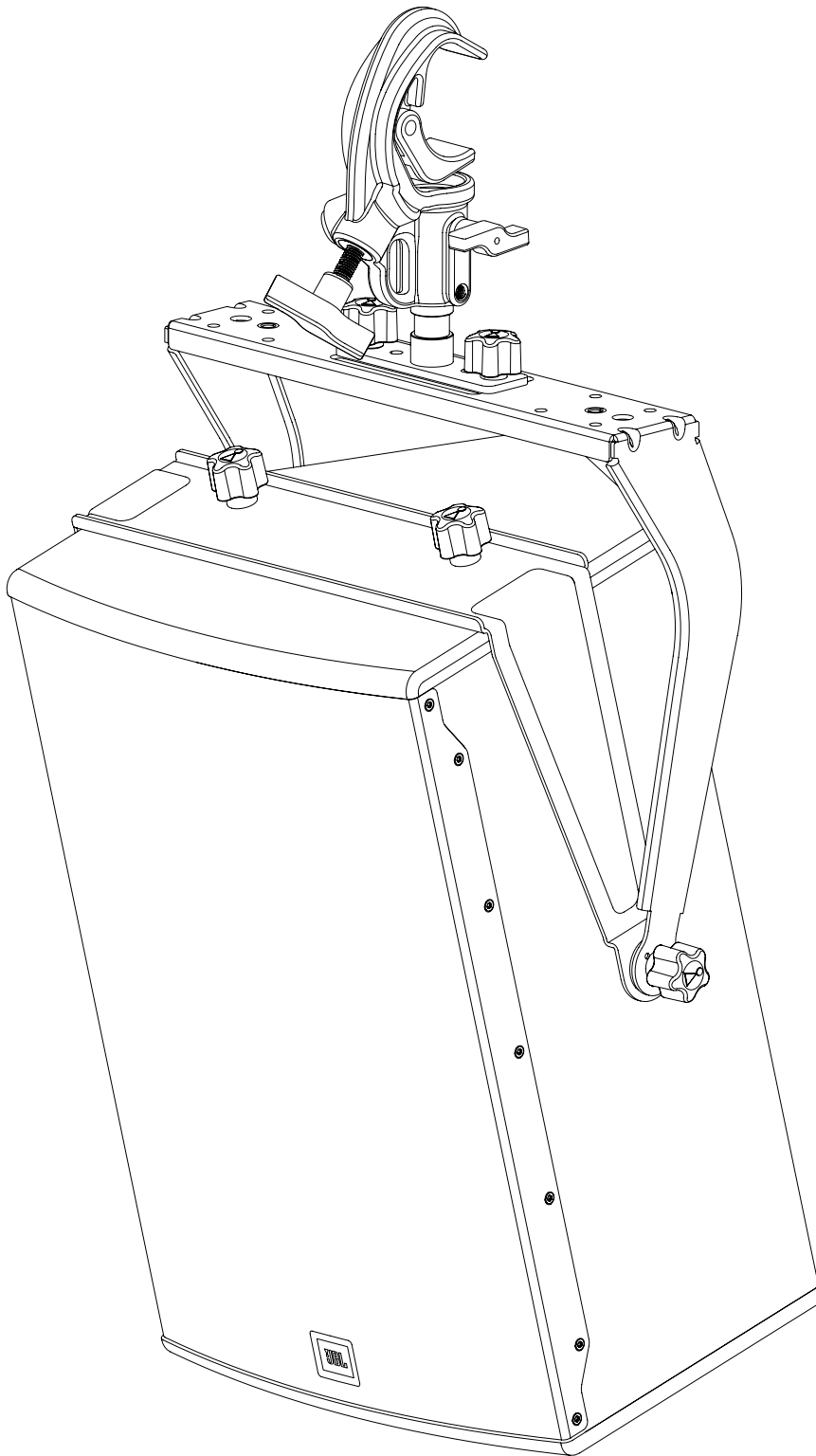


QUICK START GUIDE



GENERAL INFORMATION

RC100 | Quick Start Guide

Part Number: 5157567-00

Version: A_EN

Distribution Date: March 24, 2026

Copyright © 2026 HARMAN Professional, Inc. All rights reserved.

JBL PROFESSIONAL

8500 Balboa Boulevard

Northridge, CA 91325, USA

www.jblpro.com

TABLE OF CONTENTS

1 - DOCUMENT REVISION HISTORY	4
2 - SAFETY	5
2.1 Safety Instructions	5
2.2 General Hardware Information	5
2.3 Attachment to Structures	5
2.4 Important Safety Warning	5
2.5 Are You New to Rigging?	6
2.6 Inspection and Maintenance	6
2.7 Symbols	7
2.8 Personal Protective Equipment (PPE)	7
3 - SYSTEM COMPONENTS	8
4 - INTRODUCTION	9
4.1 RC100 Overview	9
4.2 TV SPIGOT T Overview	10
5 - INSTALLATION	11
5.1 Attach TV SPIGOT to Accessory	11
5.2 Attach RC100 to SPIGOT	12
5.3 Attaching the RC100 to the Structure	15
5.4 Loosening the Clamp	16
5.5 Attach Safety Cable	17
6 - DIMENSIONS	18
6.1 RC100	18
6.2 TV SPIGOT T	18
7 - TECHNICAL SPECIFICATIONS	19
7.1 RC100	19
7.2 TV SPIGOT T	19
8 - CONTACT INFORMATION	20

1 - DOCUMENT REVISION HISTORY

VERSION	RELEASE DATE	CHANGES
Version A	March 24, 2026	• Initial RC100 and Accessories Quick Start Guide

2 - SAFETY

2.1 SAFETY INSTRUCTIONS

1. Read these instructions.
2. Keep these instructions.
3. Heed all warnings.
4. Follow all instructions.
5. Do not expose the product to direct rain or sea spray.
6. Clean only with a dry cloth.
7. Do not install near any heat sources such as radiators, heat registers, stoves, or other apparatus that produce heat.
8. Only use attachments/accessories specified by the manufacturer.
9. Use only with a cart, stand, tripod, bracket, or table specified by the manufacturer or sold with the apparatus. When a cart is used, use caution when moving the cart/apparatus combination to avoid injury from tip-over.
10. Refer all servicing to qualified service personnel. Servicing is required when the apparatus has been damaged in any way, such as if liquid has been spilled or objects have fallen into the apparatus, or if the apparatus has been exposed to rain or moisture, does not operate normally, or has been dropped.
11. Contact JBL Professional for advanced servicing issues.
12. **CAUTION - DO NOT PERFORM ANY SERVICING UNLESS YOU ARE QUALIFIED TO DO SO.**
13. Read this **Quick Start Guide** before installation and use of the product.
14. Read and fully understand the product specific user manual, rigging manual and all safety instructions before operating, suspending or installing JBL products with this or any other accessory. Always refer to the latest manual version from www.jblpro.com

2.2 GENERAL HARDWARE INFORMATION

Any hardware used in an overhead suspension application must be load rated for the intended use. Generally, this type of hardware is available from rigging supply houses, industrial supply catalogs, and specialized rigging distributors. Local hardware stores do not usually stock these products. Compliant hardware will be referenced with a working load limit (WLL) and a traceability code.

2.3 ATTACHMENT TO STRUCTURES

A licensed Professional Engineer must approve the placement and method of attachment to the structure prior to the installation of any overhead object. The following performance standards should be provided to the Professional Engineer for design purposes: Uniform Building Code as applicable, Municipal Building Code as applicable, and Seismic Code as applicable. The installation of the hardware and method of attachment must be carried out in the manner specified by the Professional Engineer. Improper installation may result in damage, injury, or death.

2.4 IMPORTANT SAFETY WARNING

The information in this section has been assembled from recognized engineering data and is intended for informational purposes only. None of the information in this section should be used without first obtaining competent advice with respect to applicability to a given circumstance. None of the information presented herein is intended as a representation or warranty on the part of JBL. Anyone making

use of this information assumes all liability arising from such use.

All information presented herein is based upon materials and practices common to North America and may not directly apply to other countries because of differing material dimensions, specifications, and/or local regulations. Users in other countries should consult with appropriate engineering and regulatory authorities for specific guidelines.

Correct use of all included hardware is required for secure system suspension. Careful calculations should always be performed to ensure that all components are used within their working load limits before the array is suspended. Never exceed the maximum recommended load ratings. Use only load-rated hardware when suspending JBL suspendable loudspeaker models.

2.5 ARE YOU NEW TO RIGGING?

If you are new to rigging, you should:

- Know the rules for safe rigging.
- Attend a safe rigging seminar.
- Meet and establish a relationship with a licensed mechanical or structural engineer. Get in the habit of asking them questions instead of assuming their answers. Learn from what they tell you.
- Research and understand the codes, practices, and requirements of the venues where you intend to operate your sound system.

2.6 INSPECTION AND MAINTENANCE

Suspension systems are comprised of mechanical devices and, as such, require regular inspection and routine maintenance to ensure proper functionality. Before suspending or pole mounting any speaker system, always inspect all components (enclosure, suspension frames or brackets, pins, eyebolts, etc.) for cracks, deformations, corrosion, or missing/loose/damaged parts that could reduce strength and safety of the array. Do not suspend or pole mount a speaker until the proper corrective action has been taken.

Installed systems should be inspected at least once a year. The inspection must include a visual survey of all corners and load-bearing surfaces for signs of cracking, water damage, delamination, or any other condition that may decrease the strength of the loudspeaker enclosure.

Accessory suspension hardware provided with or for systems must be inspected for fatigue at least once a year or as required by local ordinance. The inspection must include a visual survey of the material for signs of corrosion, bending, or any other condition that may decrease the strength of the fastener. Additionally, any eyebolts must be checked for possible spin-out of the enclosure.

For all other hardware and fittings, refer to the hardware manufacturer's inspection and maintenance guidelines for process.

JBL is not responsible for the application of its products for any purpose or the misuse of this information for any purpose. Furthermore, JBL is not responsible for the abuse of its products caused by avoiding compliance with inspection and maintenance procedures or any other abuse.

Prior to suspending the system, an expert, trained and experienced in suspending speaker systems, should inspect all parts and components.

2.7 SYMBOLS

The following symbols are used in this document:



CAUTION: This symbol gives notice of a potential risk of harm to the individual or the equipment. Instructions marked with this symbol must be strictly followed.



TIP: This symbol gives notice of helpful, relevant information about the topic.



INSTRUCTIONS: This symbol gives notice of instructions that must be followed for proper installation and use of the product.



TOOLS REQUIRED: This symbol gives notice of tools that must be used for proper installation and use of the product.



TIPPING HAZARD: This symbol gives notice of potential tip hazard. Use caution when moving the cart/apparatus combination to avoid injury from tip-over.

2.8 PERSONAL PROTECTIVE EQUIPMENT (PPE)

Appropriate personal protective equipment (PPE) must be worn whenever installing, adjusting, or removing rigging hardware or loud-speakers. This includes, but is not limited to, safety helmets, protective footwear, gloves, and eye protection. PPE helps reduce the risk of injury from falling objects, sharp edges, pinch points, and other hazards commonly present during rigging operations. PPE requirements may vary by jurisdiction and local safety regulations must always take precedence. Always follow applicable local regulations, workplace safety requirements, and site-specific safety procedures when performing rigging tasks.



HEADWEAR: Protective headwear shall be worn.



FOOTWEAR: Protective footwear shall be worn.



GLOVES: Protective gloves shall be worn.

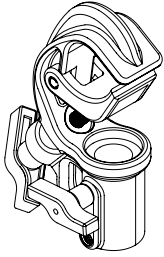


EYEWEAR: Protective eyewear shall be worn.

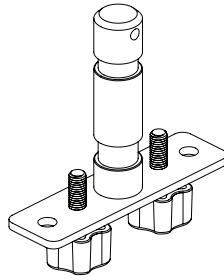


LIFTING: Practice safe lifting.

3 - SYSTEM COMPONENTS



RC100 | Rotating Clamp



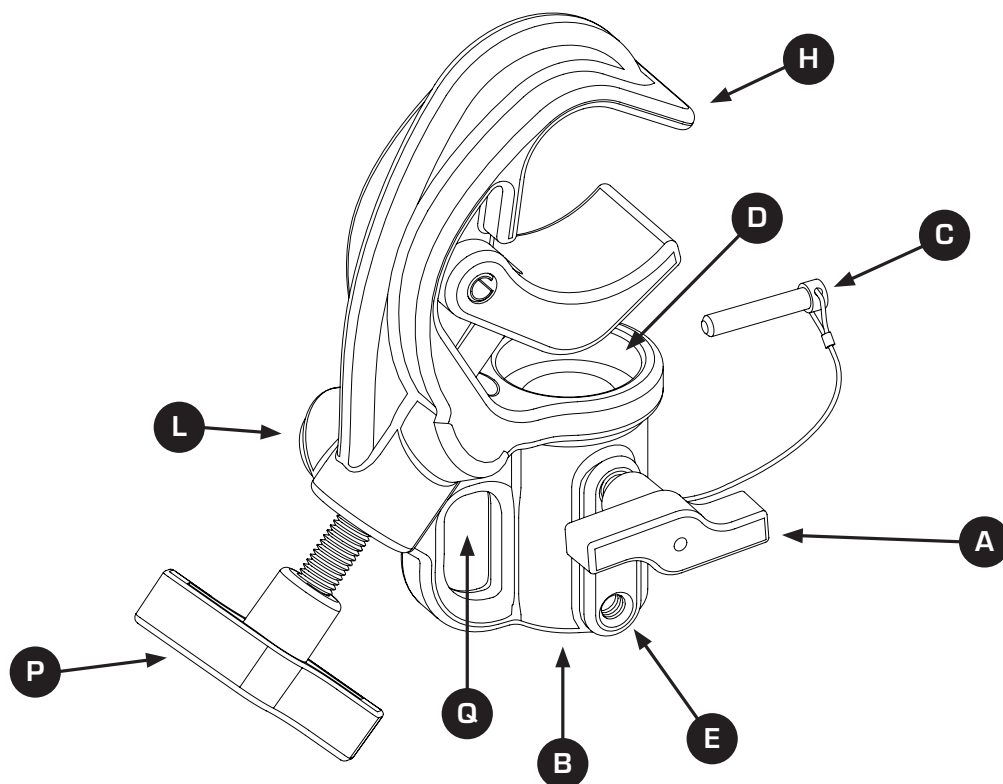
TV SPIGOT T | Spigot Adapter T-Style

4 - INTRODUCTION

The RC100 and its accessories are designed for suspending supported JBL Professional products from standard truss structures or pipes. Unlike traditional clamps, the RC100 can attach to the speaker and structures without the use of hand tools.

4.1 RC100 OVERVIEW

The RC100 is a universal truss and pipe adapter designed for suspending JBL Professional products from standard truss structures or pipes. It features a quick-action locking mechanism that allows fast, secure attachment, followed by fine adjustment using the rubber-covered T-handle. The clamp supports loads up to 100 kg (220 lb). Its wide coupling range accommodates most industry-standard pipe diameters from 40–70 mm (1.57–2.75 in) and allows for smooth 360-degree rotation, even under load. To ensure safe operation, the RC100 includes a dedicated safety cable slot and a built-in safety pin for securing loads or attached adapters.

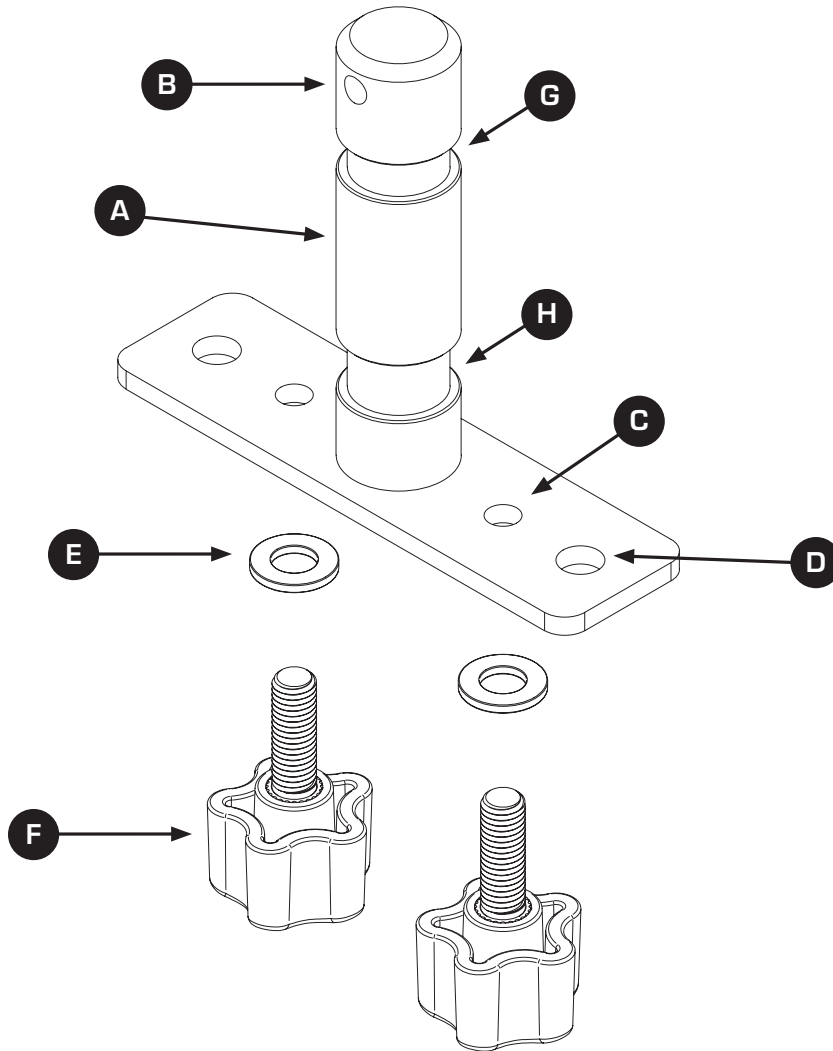


NOTES:

- A Clamping knob
- B SPIGOT attachment position
- C Safety pin
- D Safety pin recessed depression
- E Clamping knob positions (Top, Center, Bottom)
- H Clamping jaw
- L Release Button
- P Clamping jaw knob
- Q Flexible safety link through hole

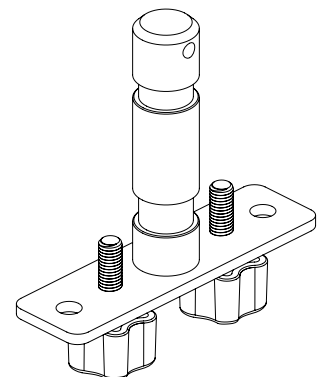
4.2 TV SPIGOT T OVERVIEW

The TV SPIGOT T is a universal adapter designed for attaching compatible JBL Professional U-brackets to standard-size clamps, such as the RC100 Rotating Clamp. The adapter connects to the U-bracket using the two central M10 attachment points typically reserved for pole-mount adapters. The adapter is supplied with two M10 knobs and washers for secure installation and includes two integrated M10 threaded storage holes for retaining the knobs when not in use.



NOTES:

- A** TV SPIGOT
- B** Safety pin position
- C** M10 Knob storage position
- D** M10 through holes for attaching to accessories
- E** M10 Washers (2X)
- F** M10 knobs (2X)
- G** Recessed safety groove (top)
- H** Recessed safety groove (bottom)



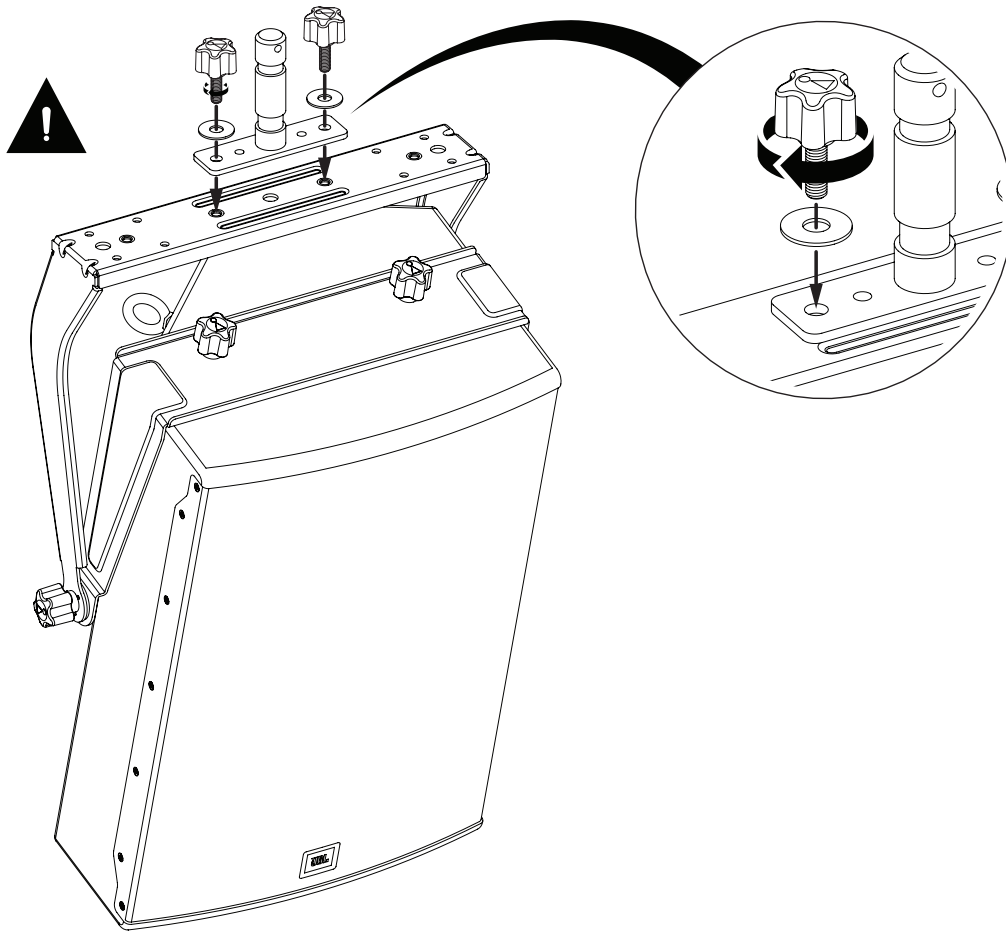
STORAGE CONFIGURATION

5 - INSTALLATION

The RC100 is a universal adapter designed for suspending JBL Professional products from truss or pipe structures when used with the JBL Professional TV-SPIGOT T adapter. Follow the instructions in this chapter to properly assemble and install the components. This Quick Start Guide covers information related to the RC100 and TV-SPIGOT T adapter only. For installation procedures involving loudspeaker accessories such as U-brackets or array frames, refer to the corresponding JBL Professional User and Rigging Manuals for those specific products.

5.1 ATTACH TV SPIGOT TO ACCESSORY

First, attach the TV SPIGOT T adapter to the accessory using the two included M10 knobs and washers. Begin by removing the knobs from their storage position.



STEPS:

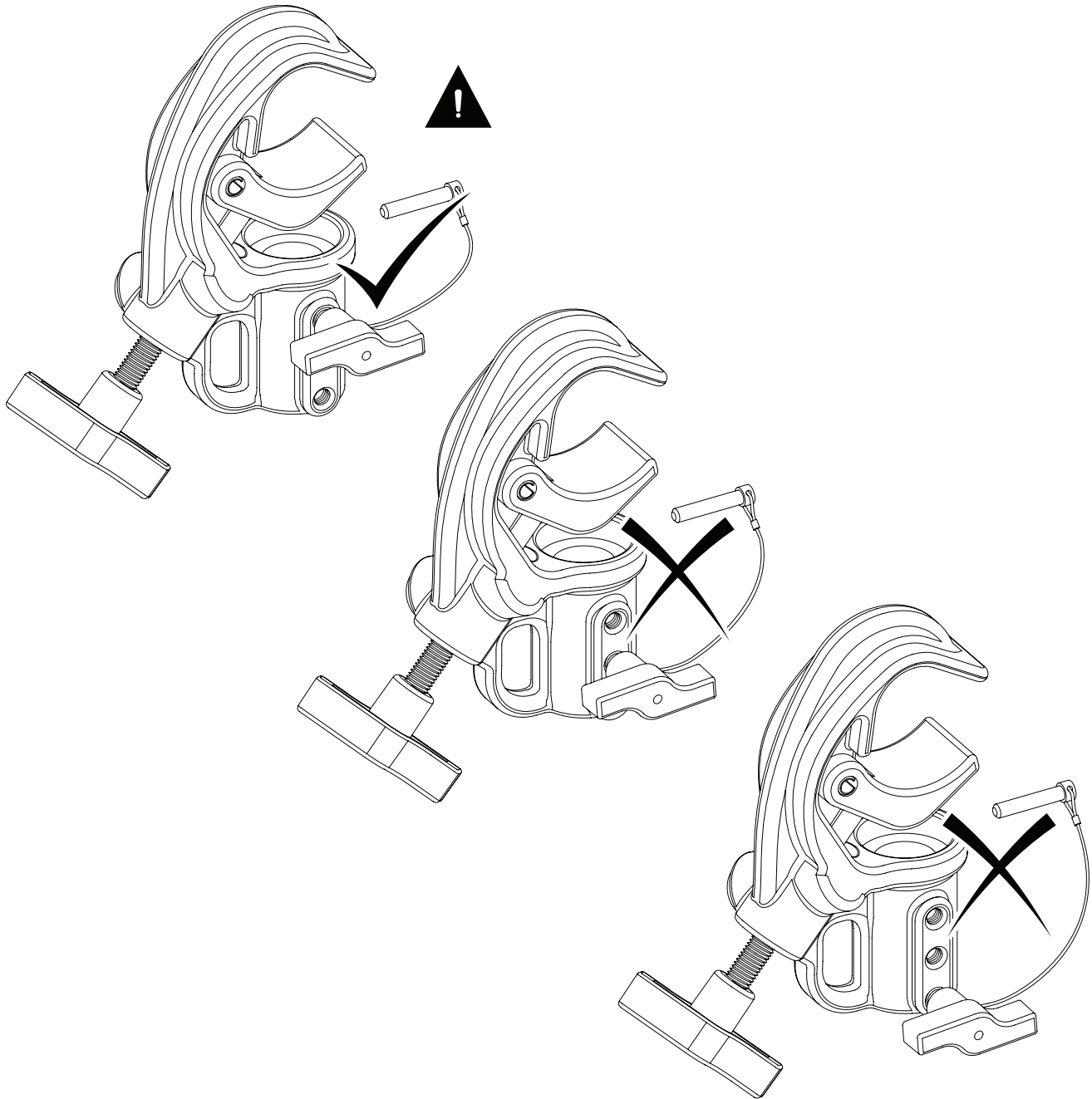
- 1 Remove the two M10 knobs from their storage position.
- 2 Align the TV SPIGOT with the accessory
- 3 Install the M10 knobs and washers.



CAUTION: Always ensure that the M10 knobs are properly seated and fully tightened. Always use the included M10 washers.

5.2 ATTACH RC100 TO SPIGOT

Attach the RC100 Rotating Clamp to the TV SPIGOT T adapter before attaching the assembly to the supporting structure. The RC100 provides three clamping knob positions for securing the TV SPIGOT T adapter. **The knob may not be set correctly by default. Prior to installation, verify that the clamping knob is installed in the uppermost position on the RC100.**



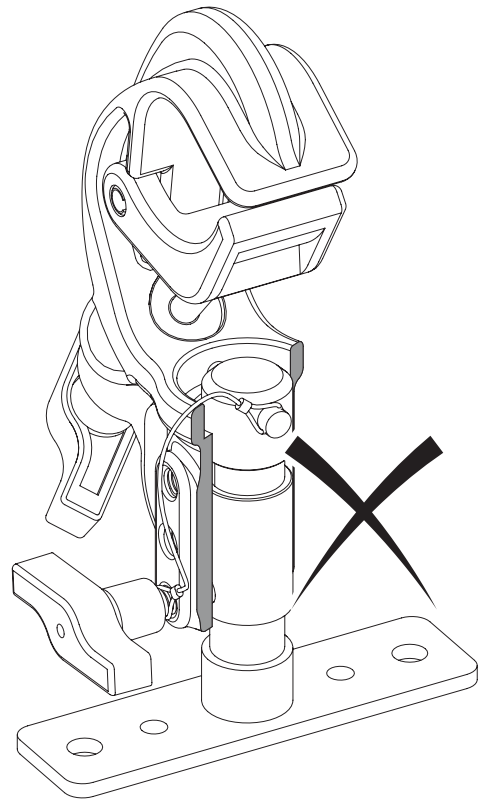
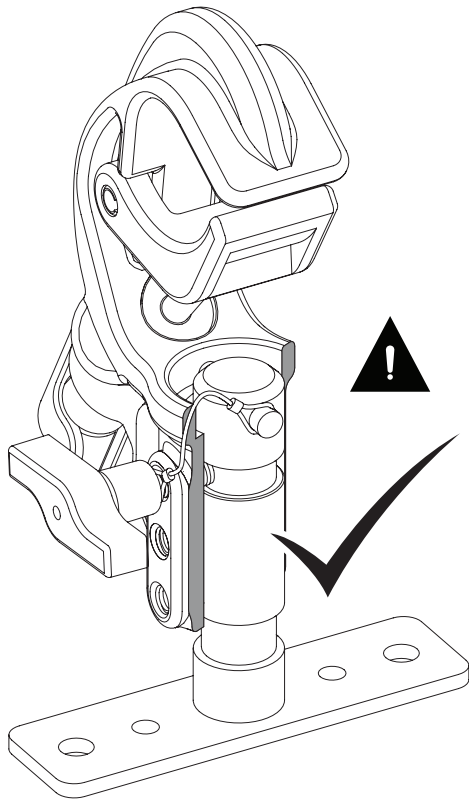
CAUTION: Prior to installation, always verify that the clamping knob is installed in the uppermost position on the RC100 to ensure alignment with the top recessed safety groove of the TV SPIGOT T adapter.

Once verified that the clamping knob is at the correct position, loosen the clamping knob until the spigot can be fully inserted into the clamp. Insert the spigot into the female receiver until it protrudes from the base of the RC100. Insert the safety pin through the spigot safety-pin hole so that it extends equally on both sides. Lift the clamp slightly so the safety pin seats securely in the recessed channel of the RC100. Tighten the locking knob firmly against the recessed safety groove on the spigot.



STEPS:

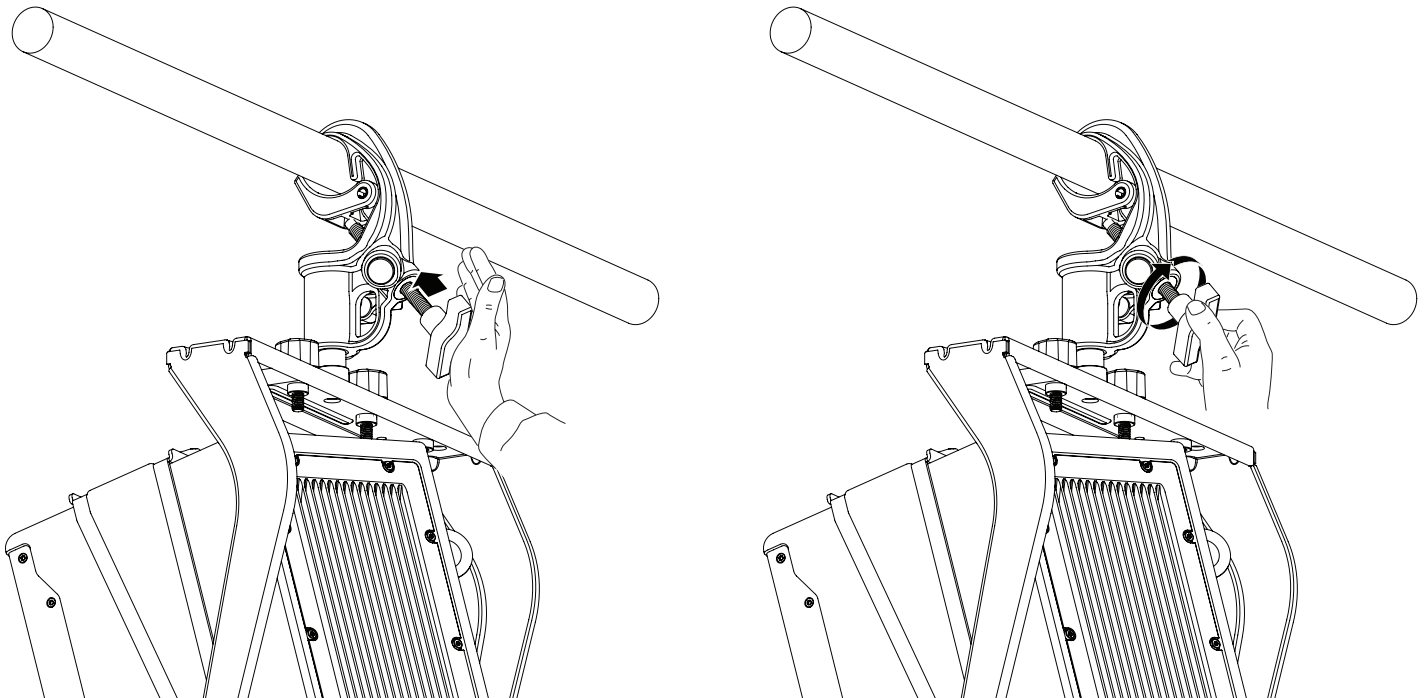
- 1 Loosen the clamping knob until the TV SPIGOT T adapter can be fully inserted into the clamp.
- 2 Insert the spigot into the female receiver until it protrudes from the base of the RC100.
- 3 Insert the safety pin through the spigot safety-pin hole so that it extends equally on both sides.
- 4 Lift the clamp slightly so the safety pin seats securely in the recessed channel of the RC100.
- 5 Tighten the locking knob firmly against the recessed safety groove on the spigot.



CAUTION: Prior to attaching the RC100 to the structure, always verify that the clamping knob is fully seated in the safety groove of the TV SPIGOT T adapter.

5.3 ATTACHING THE RC100 TO THE STRUCTURE

Once the RC100 and TV SPIGOT T adapter are connected, attach the RC100 to the supporting structure. Position the upper clamp jaw against the pipe or truss. Close the clamp by pushing the clamping jaw knob until the lower jaw fully contacts the structure. Tighten the clamp securely by turning the knob clockwise until the assembly is firmly secured to the support.



STEPS:

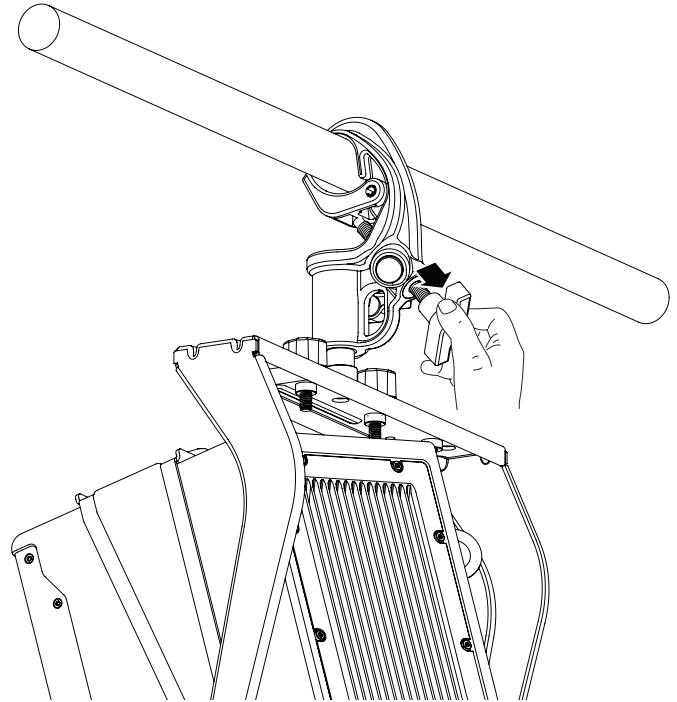
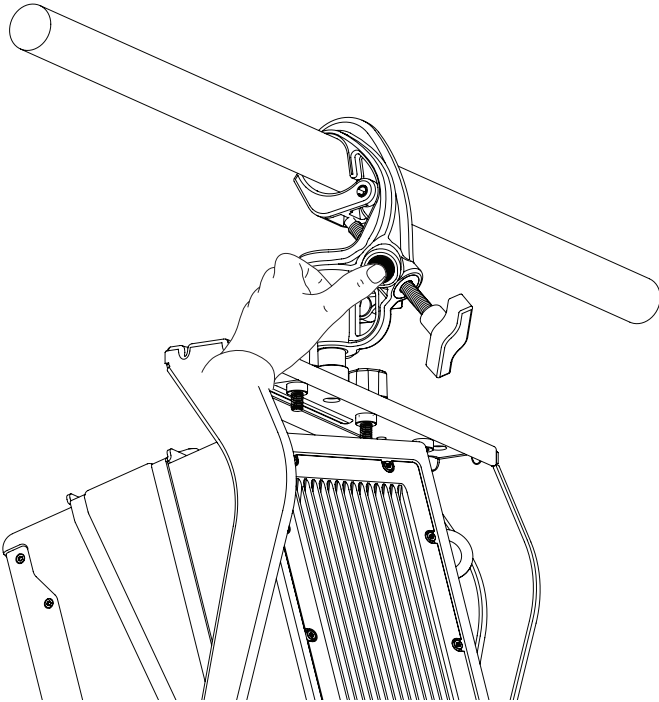
- 1 Attach the RC100 to the supporting structure by position the upper clamp jaw against the pipe or truss.
- 2 Push the clamping jaw knob to fully close the clamp.
- 3 Tighten the clamp securely by turning the knob clockwise.



CAUTION: Always ensure that the lower clamping jaw is fully closed and in contact with the structure by turning the clamping jaw knob until fully tightened.

5.4 LOOSENING THE CLAMP

To loosen the clamp, turn the clamping knob counterclockwise a few turns, then press the release button to disengage the screw mechanism and allow the screw spindle to open.

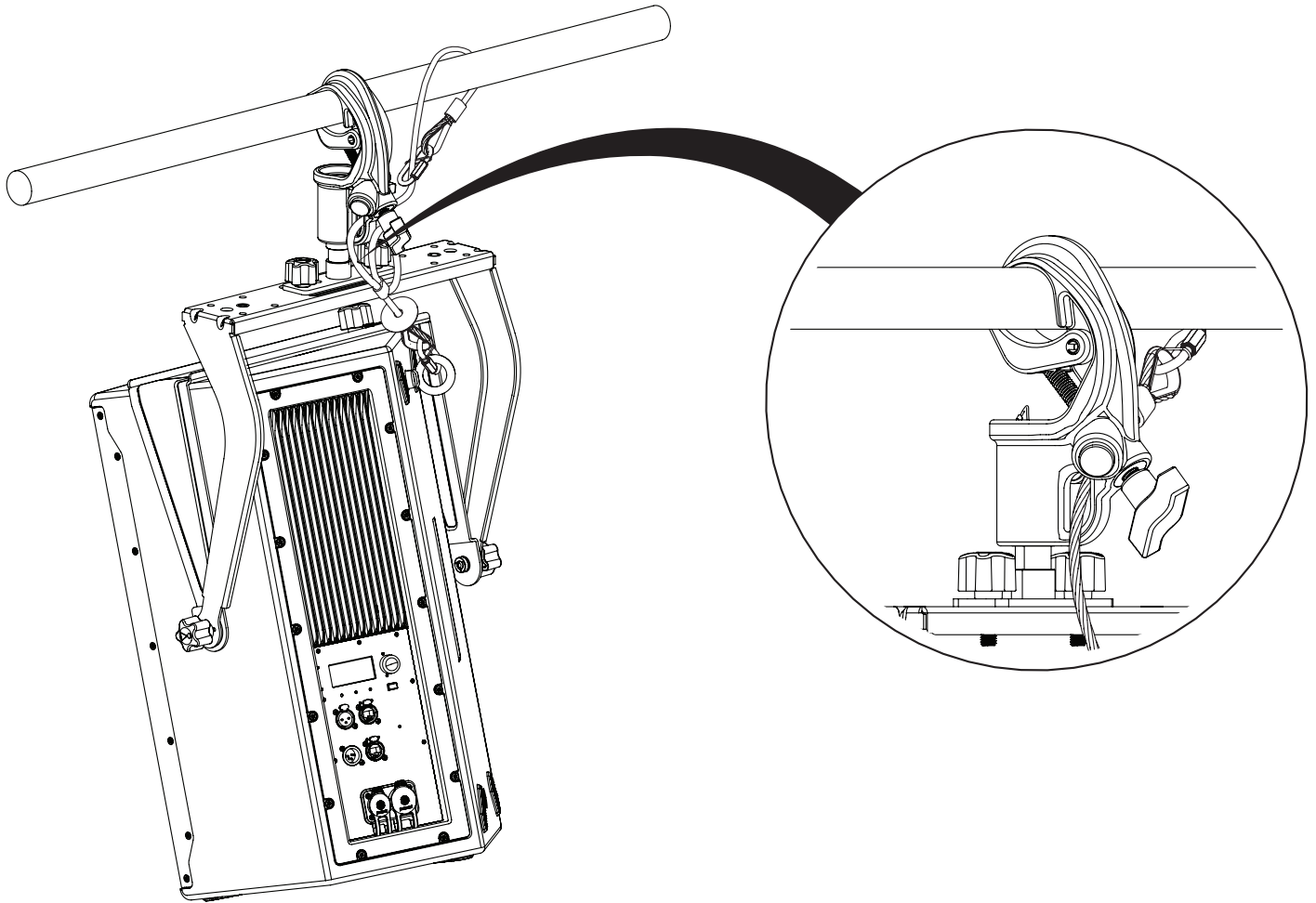


☰ STEPS:

- 1 Turn the clamping knob counterclockwise a few turns.
- 2 Press the release button to disengage the screw mechanism.

5.5 ATTACH SAFETY CABLE

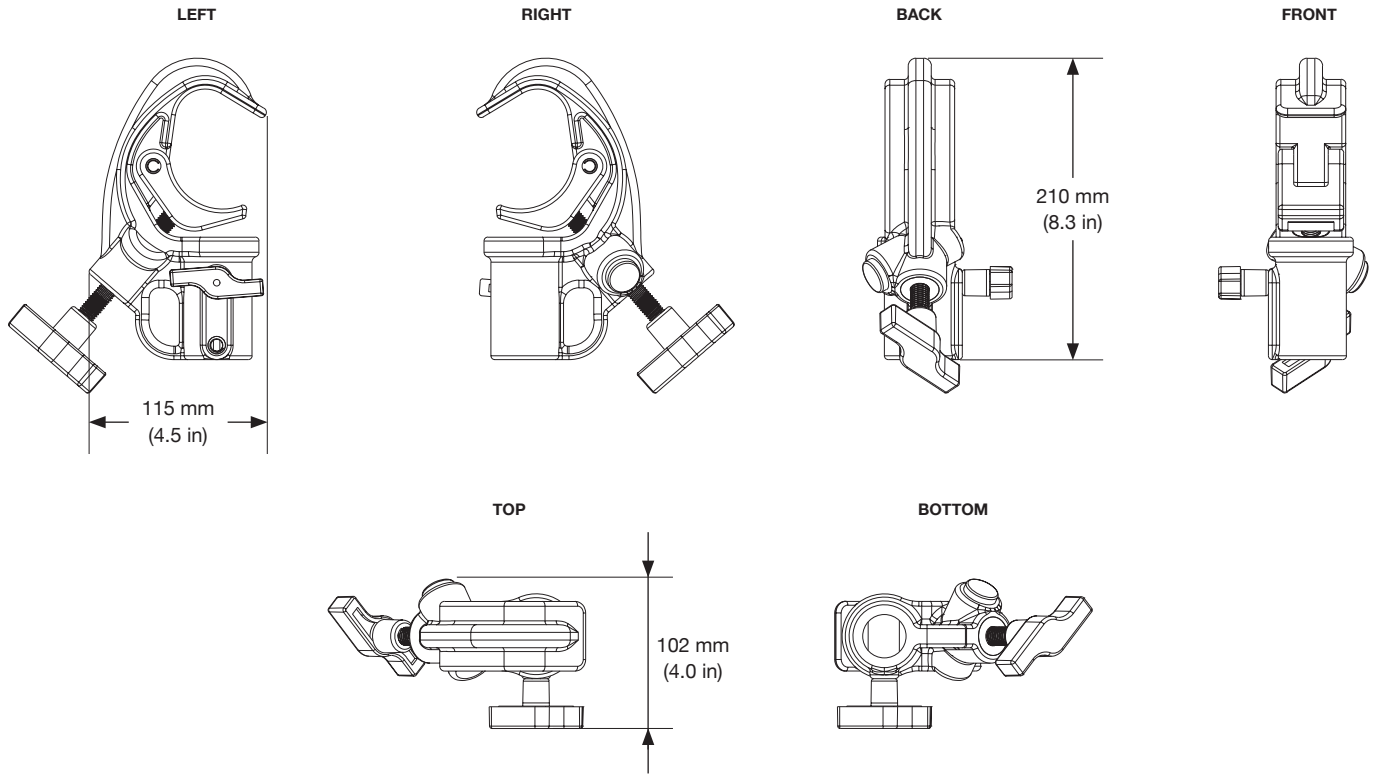
When suspending loudspeakers using the RC100, a secondary safety tether with a load rating sufficient to support the weight of the loudspeaker must be used to reduce the risk of falling in the event of primary attachment failure. Depending on the product in use, the safety tether may be connected directly to the loudspeaker using an eyebolt or attached to the suspension accessory.



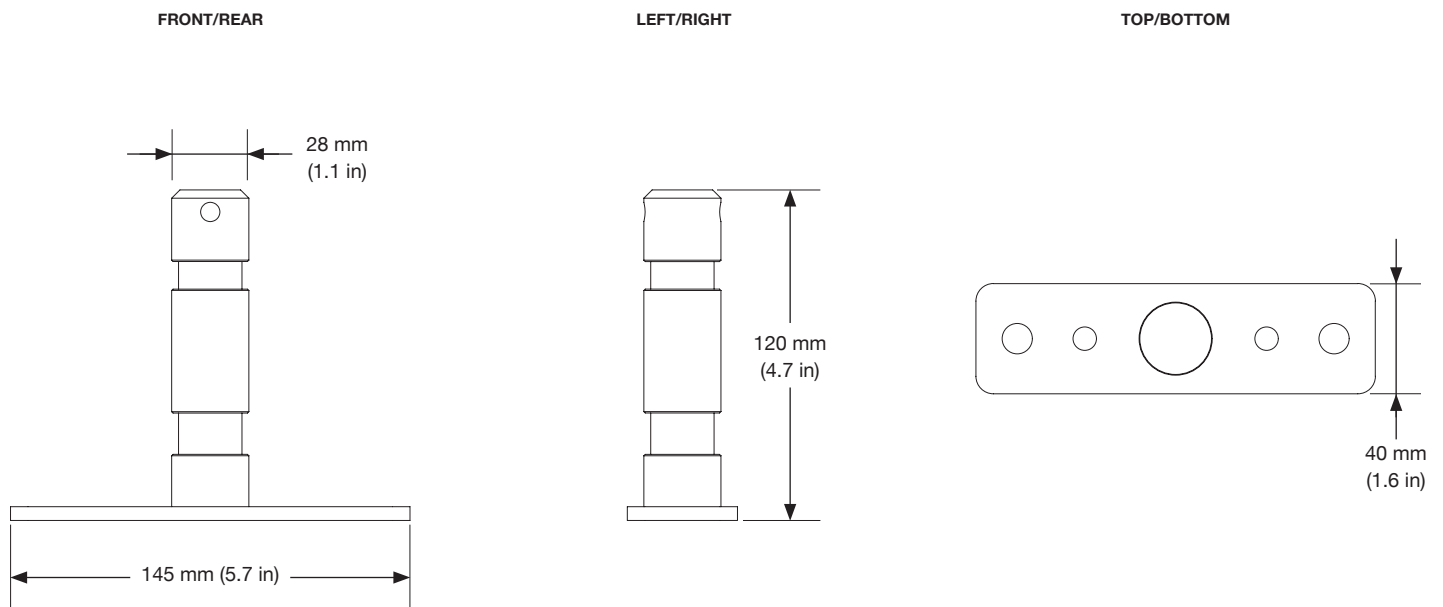
CAUTION: It is the responsibility of the installer/user to ensure that the structure and selected hardware are sufficient and rated for the exact use case and requirements.

6 - DIMENSIONS

6.1 RC100



6.2 TV SPIGOTT



7 - TECHNICAL SPECIFICATIONS

7.1 RC100

PHYSICAL

Construction : Cast aluminum

Finish : Black powder coat

Working Load Limit (WLL)¹ : 100 kg (220 lb)

Pipe Range : 40 - 70 mm (1.57 - 2.75 in)

Socket Size

Diameter : 28 mm (1.12 in)

Length : 46 mm (1.8 in)

Dimensions (H x W x D)¹ : 210 mm x 102 mm x 115 mm
(8.3 in x 4.0 in x 4.5 in)

Net Weight² : 1.3 kg (2.9 lb)

Shipping Weight : 1.4 kg (3.1 lb)

ORDERING INFORMATION

SKU : JBL-P3475 | RC100

Included : (1) RC100

7.2 TV SPIGOT T

PHYSICAL

Construction : Stainless steel with anti-corrosion coating

Finish : Silver-gray, PTFE coating

Working Load Limit (WLL)¹ : 100 kg (220 lb)

Dimensions (H x W x D) : 120 mm x 145 mm x 40 mm
(4.7 in x 5.7 in x 1.6 in)

Net Weight² : 0.9 kg (2.0 lb)

Shipping Weight : 1.0 kg (2.2 lb)

ORDERING INFORMATION

SKU : JBL-P3476 | TV-SPIGOT T

Included : (1) SPIGOT | (2) M10 Knobs (PN: 5138084-03) | (2) M10 Washers (PN: 5155344-00)

Footnotes:

1: Never exceed the Working Load Limit (WLL). Refer to the User and Rigging Manual before use.

2: Weight does not include any accessories.

JBL continually engages in research related to product improvement. Some materials, production methods, and design refinements are introduced into existing products without notice as a routine expression of that philosophy. For this reason, any current JBL product may differ in some respect from its published description, but will always equal or exceed the original design specifications unless otherwise stated.

8 - CONTACT INFORMATION

UNITED STATES OF AMERICA

HARMAN Professional Solutions

8500 Balboa Blvd.
Northridge, CA 91325
USA
+1 (844) 776-4899
www.jblpro.com

U.S.A. Technical Support

+1 (844) 776-4899
HProTechSupportUSA@Harman.com
www.jblpro.com

PROFESSIONAL CONTACTS, OUTSIDE THE U.S.A.:

Contact the JBL Professional distributor in your area. A complete list of JBL Professional international distributors is provided at our U.S.A. website: www.jblpro.com

HARMAN Professional EMEA

Westside
London Road
Hemel Hempstead
HP3 9TD
United Kingdom
www.pro.harman.com
www.jblpro.com/support

HARMAN Professional APAC

108 Pasir Panjang Road
#02-08 Golden Agri Plaza
Singapore 118535
+65 6870-5000
www.pro.harman.com
www.jblpro.com/support

HARMAN Professional China

20F, China Merchants Port Plaza, #1
Gongye 3rd Road, Shekou, Nanshan
Dist.
Shenzhen, 518067, China
400 166 7806
www.harman.com/China
www.jblpro.com/support

China In-Country Support

ChinaPRO.Service@harman.com

HARMAN Professional India

Prestige Technology Park
Jupiter 2A Block, 4th Floor
Marathahalli Ring Road
Bangalore 560103, India
+1 (800) 208-8880
www.harman.com/India
www.jblpro.com/support

HARMAN Professional Brazil

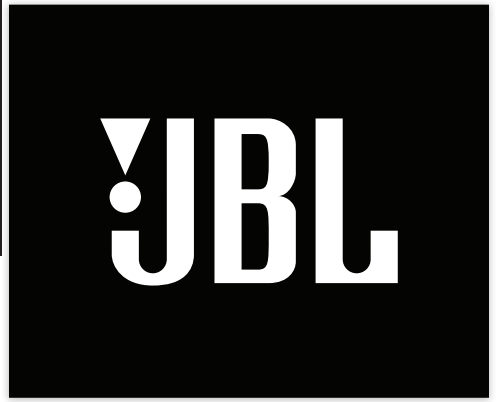
Br386, Km435 92480-000
Nova Santa Rita Rs
Brazil
+55 51 34794000
www.harman.com/Brasil
www.jblaudio.com.br
www.jblpro.com/support

India In-Country Support

www.harman.com/india/india-service-center

Brazil In-Country Support

tecnica@harman.com



PROFESSIONAL