

THESE DRAWINGS AND SPECIFICATIONS ARE THE PROPERTY OF JBL INCORPORATED. THEY ARE ISSUED IN STRICT CONFIDENCE AND SHALL NOT BE REPRODUCED OR USED AS THE BASIS FOR MANUFACTURE OR APPARATUS WITHOUT WRITTEN PERMISSION.

ALL MATERIAL SPECIFIED ON THIS DRAWING SHALL COMPLY WITH EUROPEAN DIRECTIVE 2002/95/EC. [0013]

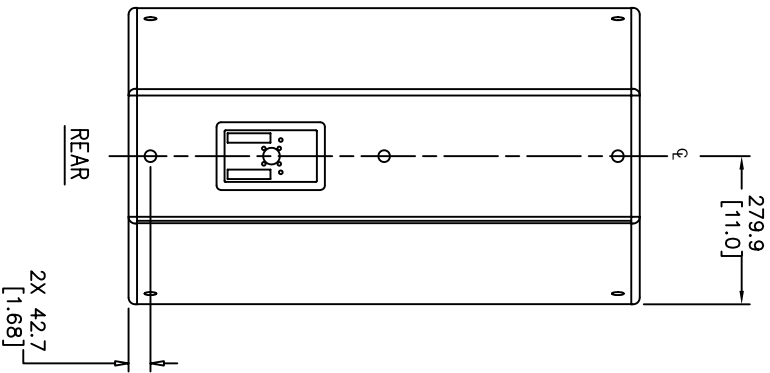
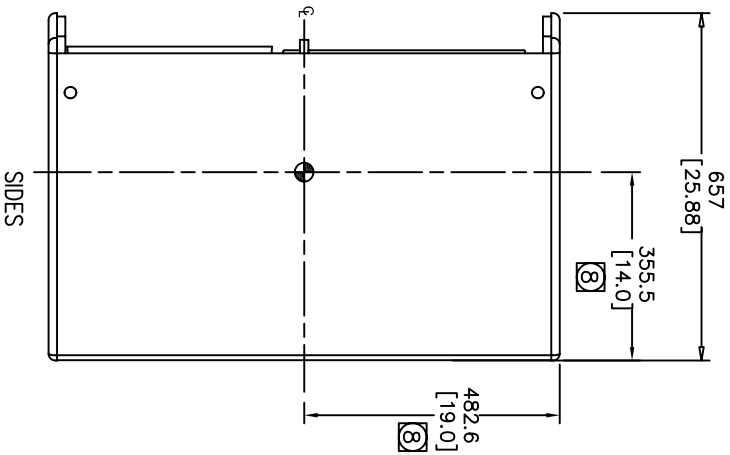
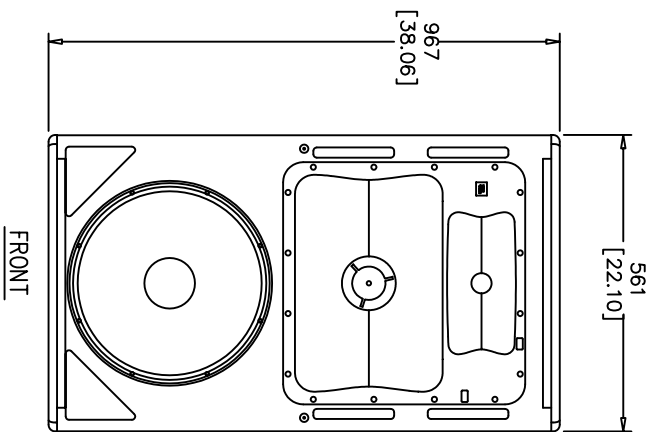
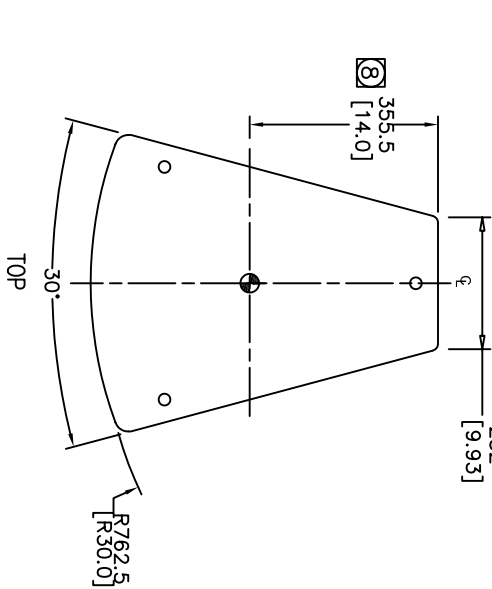
| REVISIONS |     |                      |      |     |      |
|-----------|-----|----------------------|------|-----|------|
| CHG.      | LTR | DESCRIPTION          | DEPT | D.C | DATE |
| 39804     | A   | RELEASE TO MARKETING | TH   |     |      |
|           |     |                      |      |     |      |


4

3

2

1



- 8 INDICATED DIMENSIONS ARE TO CENTER OF GRAVITY (CG) 
7. WEIGHT: 45.8 Kg (101 LBS).
6. SUSPENSION POINTS: M10 THREADED SUSPENSION POINTS. 3X TOP, 3X BOTTOM, 2X LEFT, 2X RIGHT, 3X REAR
5. COMPONENTS: LF – 2265HPL  
MF – 2169H  
HF – 2432H
4. INPUT CONNECTORS: NEUTRIK NL8 IN PARALLEL WITH 8 POSITION TERMINAL STRIP.
3. GRILL: 14 GA. PERFORATED CRS, POWDER COATED BLACK WITH BLACK FOAM BACKING.
2. MATERIALS: 15.8 MM BIRCH PLYWOOD.
1. FINISH: BLACK DURAFLEX  
(WHITE AVAILABLE BY CUSTOM ORDER)

NOTES: (UNLESS OTHERWISE SPECIFIED)

A

B

C

D

A

B

C

D

| TOLERANCES<br>(UNLESS OTHERWISE SPECIFIED) |             |
|--|-------------|
| X.XX                                       | ± .063 INCH |
| X.X  | ± .125 INCH |
| ANGULAR TOLERANCE OF 0±30°                 |             |
| FRACTIONAL DIMENSIONS ± 1/32               |             |
| • DIMENSIONS ARE INCHES                    |             |
| • ALL DIMENSIONS ARE FINISHED DIMENSIONS   |             |
| • DO NOT SCALE DRAWING                     |             |

|   |  |   |  |
|---|--|---|--|
|  |  | JBL PROFESSIONAL<br>A Harman International Company<br>Northridge, California 91329 U.S.A. |  |
| TITLE<br>CUSTOMER DRAWING: AM7315/XX  |  |   |  |

| SIZE  | DRAWING NO. | REV          |
|-------|-------------|--------------|
| A     | 445337      | A            |
| SCALE | NTS         | SHEET 1 OF 1 |