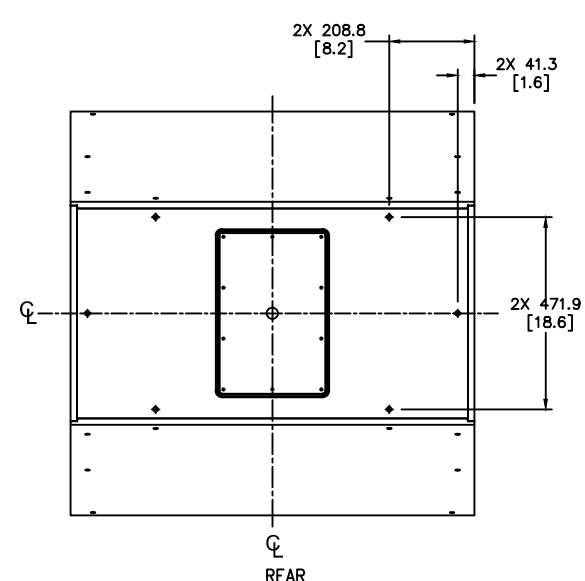
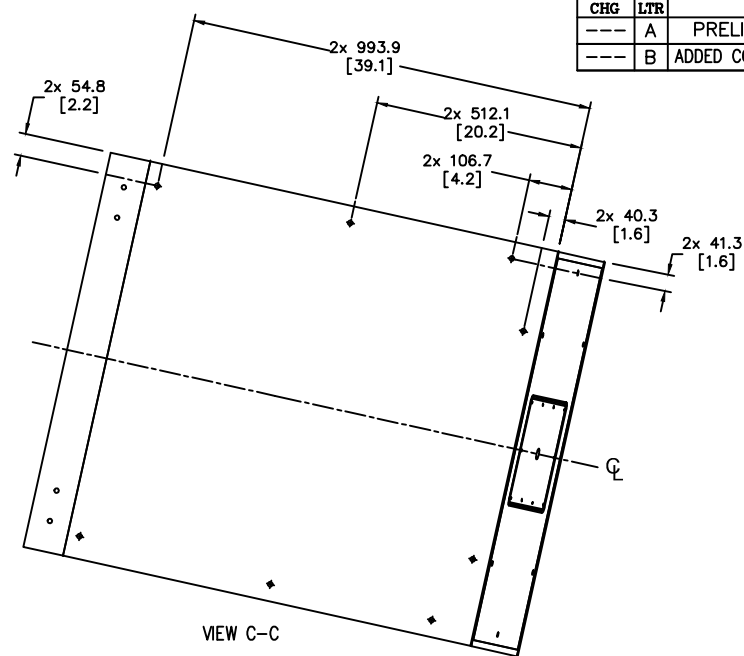
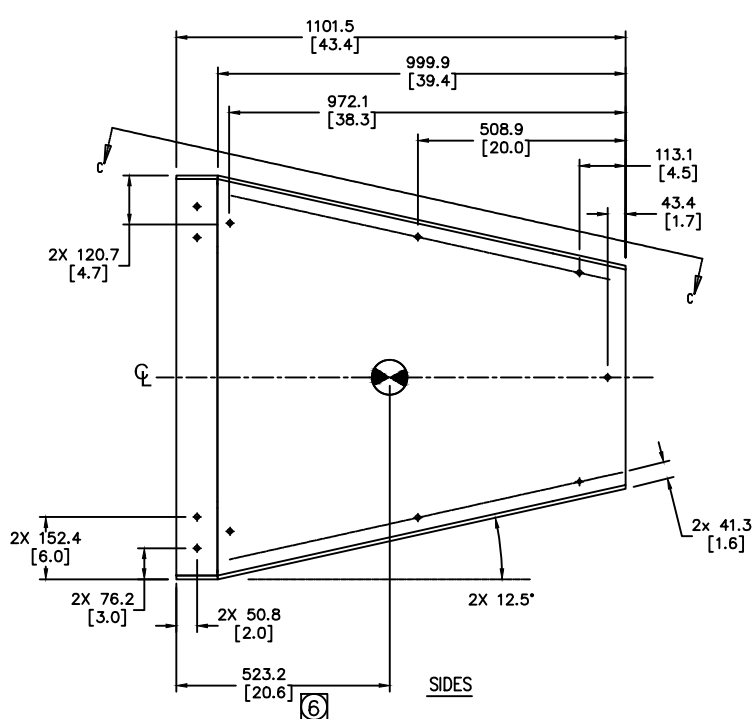
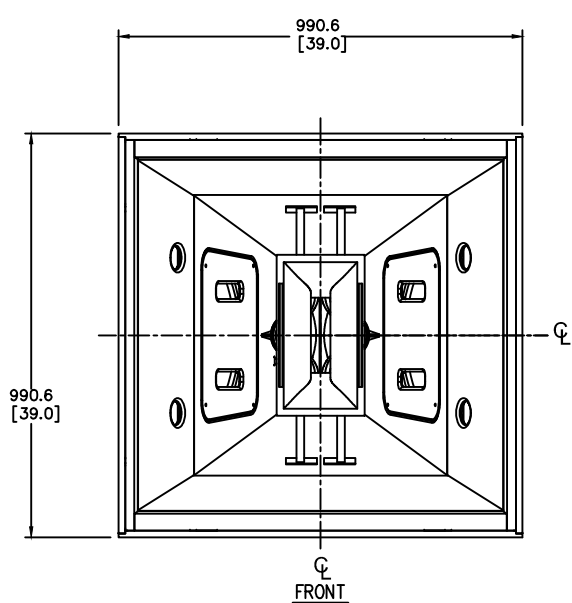
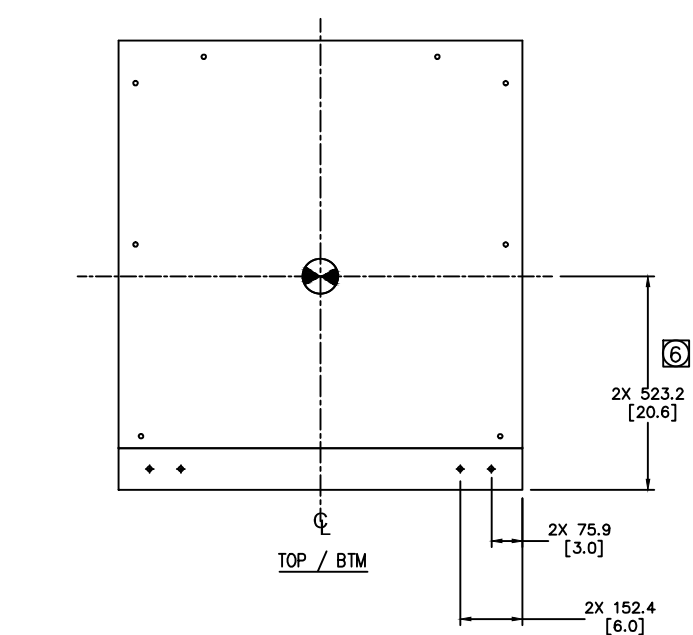


THESE DRAWINGS AND SPECIFICATIONS ARE THE PROPERTY OF JBL INCORPORATED. THEY ARE ISSUED IN STRICT CONFIDENCE AND SHALL NOT BE REPRODUCED OR USED AS THE BASIS FOR MANUFACTURE OR APPARATUS WITHOUT WRITTEN PERMISSION.

ALL MATERIAL SPECIFIED ON THIS DRAWING SHALL COMPLY WITH EUROPEAN DIRECTIVE 2002/95/EC. **RoHS**

REVISIONS						
CHG	LTR	DESCRIPTION	DRFT	D.C	DATE	APPR
---	A	PRELIMINARY RELEASE	TH		1/28/15	SO
---	B	ADDED CG LOCATION AND WEIGHT.	TH		2/20/15	SO



7. SUSPENSION POINTS: M10 THREADED SUSPENSIONS POINTS  
12X TOP, 12X BTM, 11X LEFT, 11X RIGHT, 6X REAR.

⑥ INDICATED DIMENSIONS ARE TO  
CENTER OF GRAVITY (CG)

5. WEIGHT: 335 LBS.

4. COMPONENTS: LF - 2X 2265H, MF - 2X CMCD-82H,  
LF - 2X 2432H.

3. ALL DIMENSIONS SHOWN ARE UNFINISHED DIMENSIONS.

2. MATERIALS: COMBINATION OF 5/8" AND 18mm  
BIRCH PLYWOOD.

1. FINISH: GRAY FIBERGLASS COATING (WRX), BLACK DURAFLEX,  
WHITE AVAILABLE

NOTES: (UNLESS OTHERWISE SPECIFIED)

#### TOLERANCES (UNLESS OTHERWISE SPECIFIED)

X.XX ± .063 INCH

X.X ± .125 INCH

ANGULAR TOLERANCE OF 0°±30°

FRACTIONAL DIMENSIONS ± 1/32

\* DIMENSIONS ARE INCHES

\* ALL DIMENSIONS ARE FINISHED DIMENSIONS

\* DO NOT SCALE DRAWING



JBL PROFESSIONAL  
A Harman International Company  
Northridge, California 91329 U.S.A.

TITLE  
CUSTOMER DRAWING: PD743i-215

SIZE A DRAWING NO. 1000171491 REV B

SCALE NTS SHEET 1 OF 1