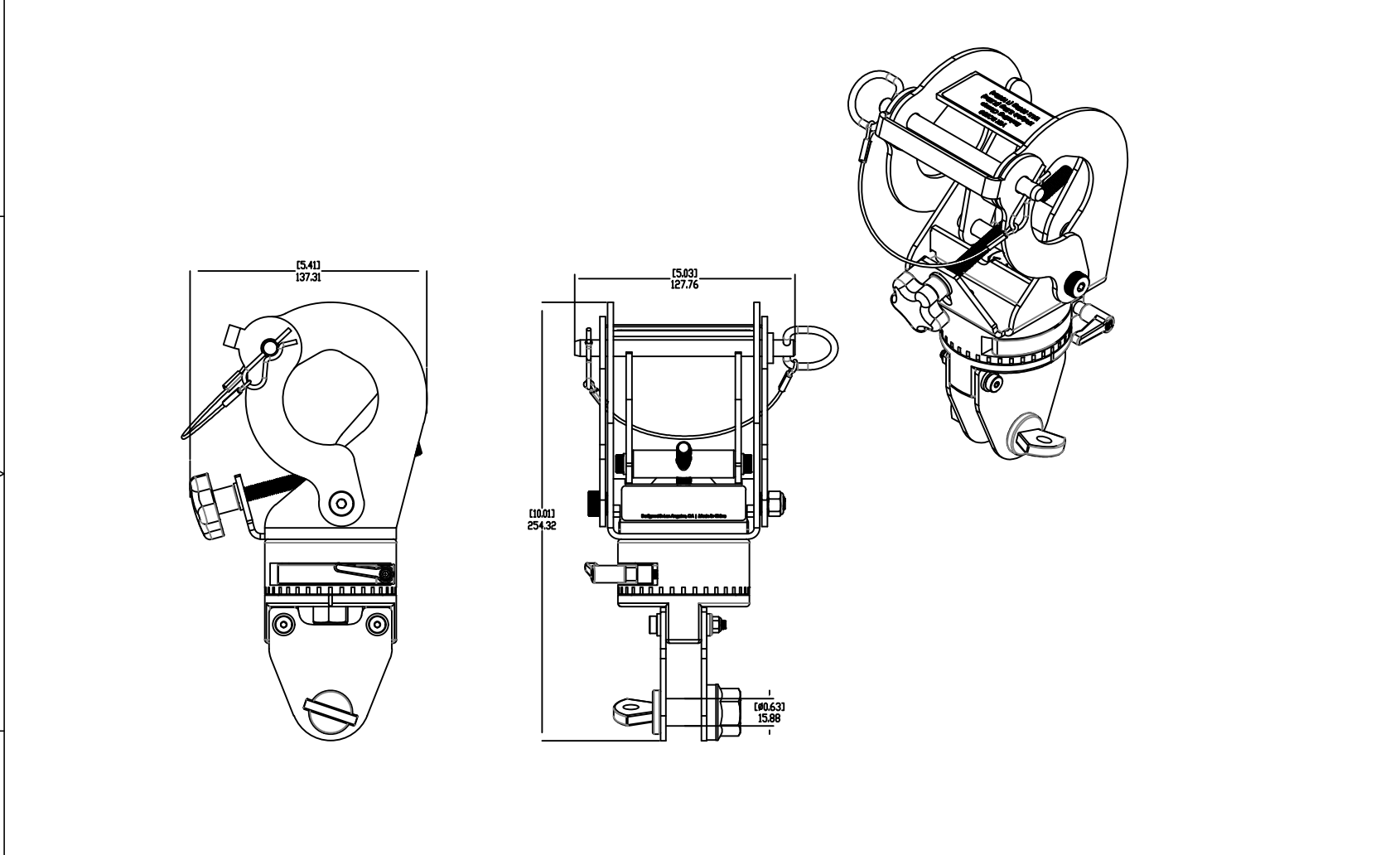


THESE DRAWINGS AND SPECIFICATIONS ARE THE PROPERTY OF JBL INCORPORATED. THEY ARE ISSUED IN STRICT CONFIDENCE AND SHALL NOT BE REPRODUCED OR USED AS THE BASIS FOR MANUFACTURE OR APPARATUS WITHOUT WRITTEN PERMISSION.


REVISIONS			
LTR	DESCRIPTION	DRFT	DATE
A	RELEASE TO MARKETING	EH	3/12/2019



1. MATERIALS: HIGH GRADE STEEL
2. FINISH: BLACK POWDERCOAT
3. SUSPENSION POINTS: 1X HANGING POINT ATTACHED TO TRUSS. 1X SHACKLE PIN TO BE ATTACHED TO LINE ARRAY
4. WEIGHT: 3.3KGS (7.3LBS)

NOTES: (UNLESS OTHERWISE SPECIFIED)

TOLERANCES (UNLESS OTHERWISE SPECIFIED)	
.XX	± .003 INCH
.X	± .125 INCH
ANGULAR TOLERANCE OF 0°±30°	
FRACTIONAL DIMENSIONS ± 1/32	
* DIMENSIONS ARE IN INCHES	
* ALL DIMENSIONS ARE FINISHED DIMENSIONS	
* DO NOT SCALE DRAWING	

 JBL PROFESSIONAL A Harman International Company Northridge, California 91329 U.S.A.	
TITLE CUSTOMER DRAWING, VTX RC500	
SIZE A	DRAWING NO. 10000341567
SCALE NTS	REV A
SHEET 1 OF 1	