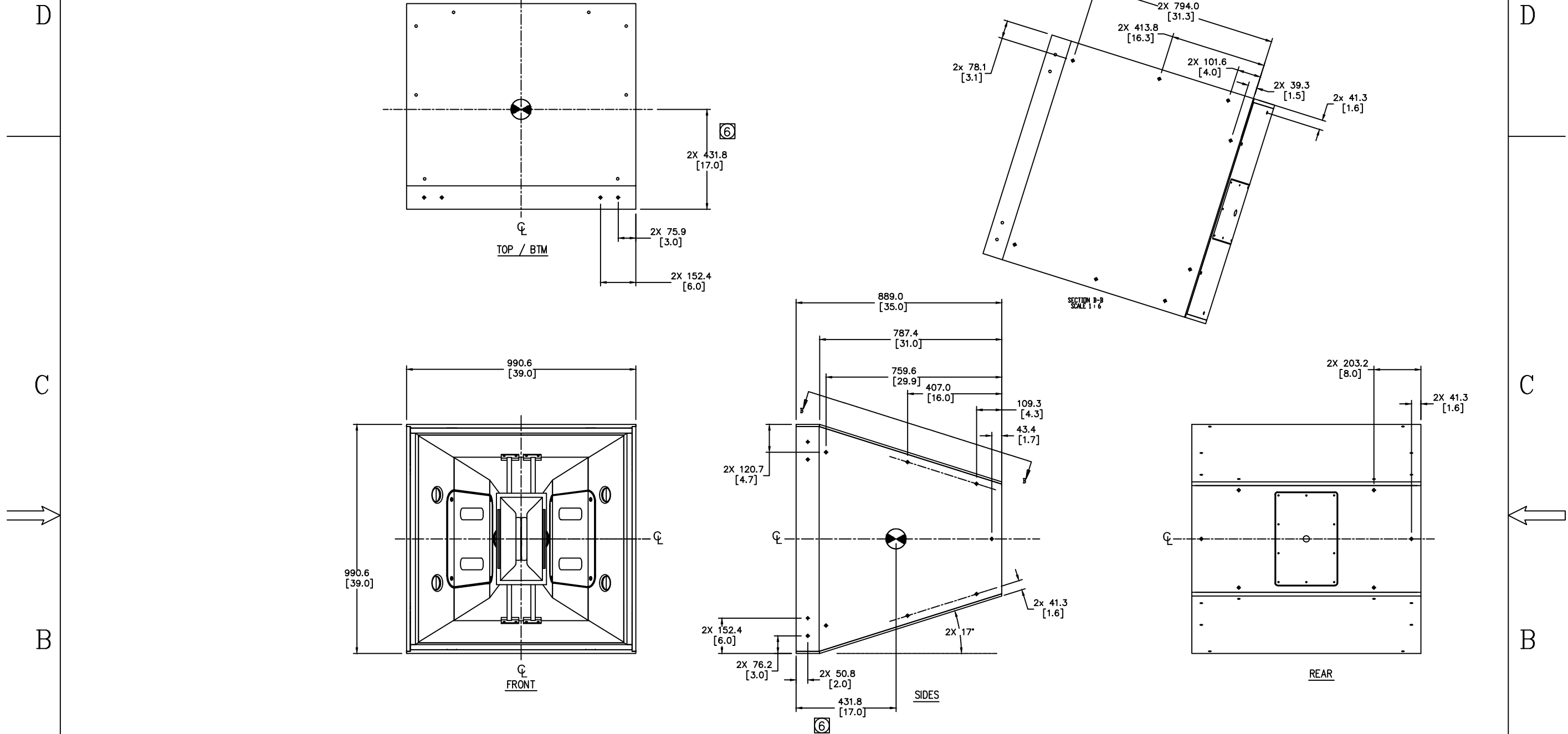


THESE DRAWINGS AND SPECIFICATIONS ARE THE PROPERTY OF JBL INCORPORATED. THEY ARE ISSUED IN STRICT CONFIDENCE AND SHALL NOT BE REPRODUCED OR USED AS THE BASIS FOR MANUFACTURE OR APPARATUS WITHOUT WRITTEN PERMISSION.

ALL MATERIAL SPECIFIED ON THIS DRAWING SHALL COMPLY WITH EUROPEAN DIRECTIVE 2002/95/EC. **RoHS**

REVISIONS						
CHG	LTR	DESCRIPTION	DRFT	D.C	DATE	APPR
---	A	RELEASE TO MARKETING	TH		1/28/15	SO
---	B	REV. DIM OF TOP CENTER M10 LOC.	TH		2/20/15	SO
---	C	REVISED TEMPLATE TYPE	TH		6/17/15	SO



7. SUSPENSION POINTS: M10 THREADED SUSPENSIONS POINTS
12X TOP, 12X BTM, 11X LEFT, 11X RIGHT, 6X REAR.

⑥ INDICATED DIMENSIONS ARE TO
CENTER OF GRAVITY (CG)

5. WEIGHT: 295 LBS.

4. COMPONENTS: LF - 2X 2265H, MF - 2X CMCD-82H,
LF - 2X 2432H.

3. ALL DIMENSIONS SHOWN ARE UNFINISHED DIMENSIONS.

2. MATERIALS: COMBINATION OF 5/8" AND 18mm
BIRCH PLYWOOD.

1. FINISH: GRAY FIBERGLASS COATING (WRX), BLACK DURAFLEX,
WHITE AVAILABLE

NOTES: (UNLESS OTHERWISE SPECIFIED)

TOLERANCES
(UNLESS OTHERWISE SPECIFIED)

X.XX ± .063 INCH

X.X ± .125 INCH

ANGULAR TOLERANCE OF 0°±30°

FRACTIONAL DIMENSIONS ± 1/32

* DIMENSIONS ARE INCHES

* ALL DIMENSIONS ARE FINISHED DIMENSIONS

* DO NOT SCALE DRAWING



JBL PROFESSIONAL
A Harman International Company
Northridge, California 91329 U.S.A.

TITLE

CUSTOMER DRAWING: PD764i-215

SIZE

DRAWING NO.

1000159171

REV

C

SCALE

NTS

SHEET

1

OF

1