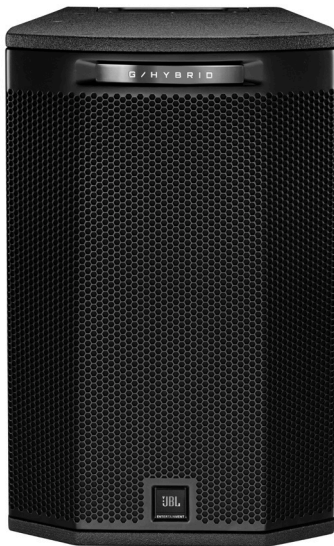


# JBL GHD2

Grand Hybrid Series - 12" Full-Range Speaker



JBL GHD2 12-inch full-range speaker is a premium solution specially designed for KTV party rooms.

With over 70 years of experience in speaker design, JBL GHD2 12-inch full-range speaker adopts an innovative and durable crossover board with abundant high-quality capacitors, guaranteeing exceptional sound reproduction and providing users with smooth, crystal-clear audio experience.

JBL GHD2 features a distinctive structural innovation that sets it apart from conventional KTV speakers. Its main speaker boasts a front-loaded ventilation design, which optimizes power delivery by reducing impact from the back wall. The effort ensures uninterrupted and robust performance.

JBL GHD2 provides multi-purpose mounting points and features a rotatable logo, allowing for both vertical and horizontal installations to cater to different mounting preferences. In addition, JBL GHD2 is pole-mount ready, ensuring easy mounting for shot-out competitions.

## KEY MESSAGES ■

### DESIGNED FOR KTV PARTY ROOMS

Power is the key. JBL GHD2 12-inch full-range speaker features the advanced JBL 2432H-1 neodymium voice coil compression driver, delivering the distinctive JBL signature sound, with an output power of 600W. The main speaker is also equipped with the modified JBL 2226H low-frequency woofers, ensuring deep and resonant bass output. Front ventilation ensures full power delivery for dancing and DJ applications.

### HIGH PERFORMANCE AND LUXURY DESIGN

Built with durable European birch plywood, JBL GHD2 eliminates cabinet resonance and improves low-frequency response, guaranteeing reliable performance and delivering exceptional sound reproduction. Its high-gloss grille surface and Obsidian cabinet finish exude a sense of luxury and premium quality. Luxury G/Hybrid logo matches the style of party room decoration.

### DURABLE AND RELIABLE

JBL GHD2 full-range speaker undergoes rigorous stimulations tests and evaluation in Mexico. It incorporates a robust crossover board with fibre material construction, which can withstand the heat produced during high-power playback, thus ensuring consistent performance over prolonged periods of use.

## FULL FEATURES ■

- **JBL Transducer.** It adopts JBL 2226H low-frequency woofers and JBL 2432H-1 neodymium voice coil compression driver to provide JBL signature sound and robust full-range response.
- **PSL Lighting Technology.** Enable the JBL Grand Hybrid logo to illuminate when vibrant music is playing, enhancing its modern and stylish appeal.
- **Front-loaded Ventilation.** Allow the speaker to achieve high power output and reduce interference from the back wall.
- **Endurable Cross-over Board.** Abundant high-quality capacitors in the cross-over board contribute to exceptional sound reproduction, resulting in clear and precise audio output.
- **NL4 Neutrik Speakon® Connectors.** Facilitate seamless loop-thru connection of multiple speakers, and achieve system extension with minimal effort.
- **High-end Aesthetic Design.** The high-gloss grille surface and Obsidian Duraflex finish contribute to the premium appearance that radiates luxury and quality. Torx screws are used in the design, emphasizing its premium and unique attributes.
- **Flexible Installation.** Multi-purpose mounting points support vertical and horizontal installation to cater to different mounting preferences.
- **Rotatable JBL Entertainment logo.** Supports both horizontal and vertical installation.

# JBL GHD2

Grand Hybrid Series - 12" Full-Range Speaker



## TECHNICAL SPECIFICATIONS

### SYSTEM TYPE

<b>FREQ RANGE (-10dB)<sup>1</sup>:</b>	48 Hz - 20 kHz
<b>FREQ RESP (<math>\pm 3</math> dB)<sup>1</sup>:</b>	80 Hz - 18 kHz
<b>SYSTEM SENSITIVITY (1W @ 1M)<sup>1</sup>:</b>	97 dB
<b>IMPEDANCE:</b>	8 ohms
<b>MAX SPL <sup>2</sup>:</b>	125 dB continuous average (137 dB peak)
<b>POWER RATING <sup>3</sup> (CONTINUOUS/PROGRAM /PEAK):</b>	600W / 1200W / 2400W
<b>COVERAGE:</b>	80° x 80°

### TRANSDUCERS

<b>LF DRIVER:</b>	JBL 2226H LOW-FREQUENCY WOOFERS
<b>HF DRIVER</b>	JBL 2432H-1 NEODYMIUM VOICE COIL SUPPRESSION DRIVER

### PHYSICAL

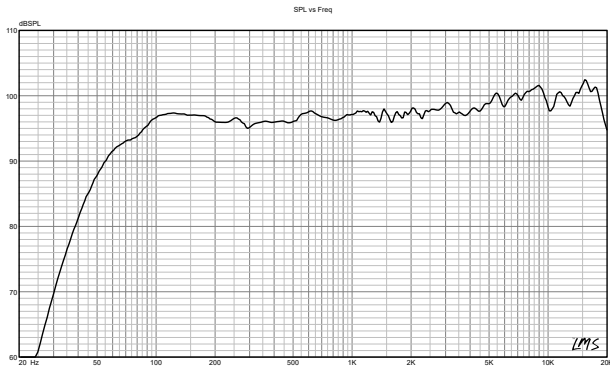
<b>ENCLOSURE:</b>	15 mm Birch Plywood
<b>FINISH:</b>	Duraflex finish
<b>GRILLE:</b>	High-gloss grille surface
<b>INPUT CONNECTOR:</b>	NL4 Neutrik Speakon® in parallel for loop-thru
<b>DIMENSIONS (L X W X H):</b>	616 x 456 x 392 mm
<b>NET WEIGHT:</b>	24.7 kg

### FOOTNOTES

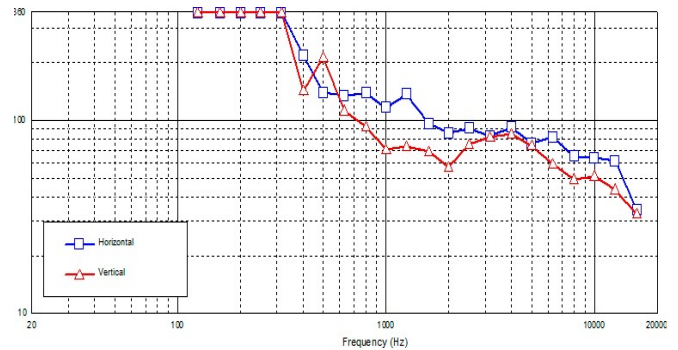
- 1: Measurement conducted under full-space (4 $\pi$ ) conditions.
- 2: Peak, unweighted SPL, measured under full-space conditions at 1 meter using broadband pink noise with a 12dB crest factor.
- 3: Testing conducted for 2 hours under pink noise with a crest factor of 6dB, in accordance with IEC standards.

JBL is consistently dedicated to product updates. It integrates new materials, manufacturing processes, or improved designs into existing products without additional notifications. As a result some of the current JBL products may differ from the descriptions provided in product literature. Unless otherwise stated, these updated products perform equivalently or surpass the original design in terms of performance or specifications.

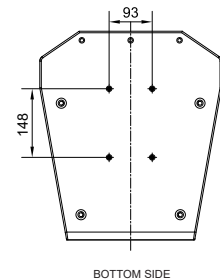
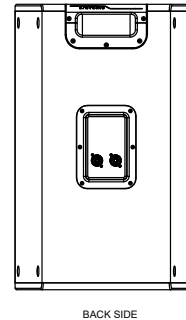
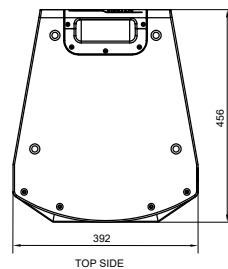
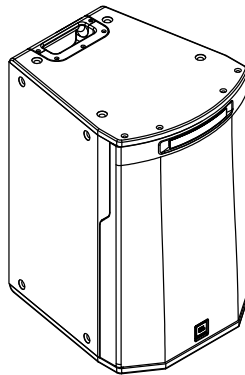
## FREQUENCY RESPONSE



## BEAMWIDTH



## DIMENSIONAL DRAWINGS



HARMAN Professional 8500 Balboa Blvd. Northridge, CA 91329 USA

© 2023 HARMAN International Industries, Incorporated. All rights reserved. Features, specifications and appearance are subject to change without notice.

[www.jblpro.com](http://www.jblpro.com)

Issued: 03 / 2024