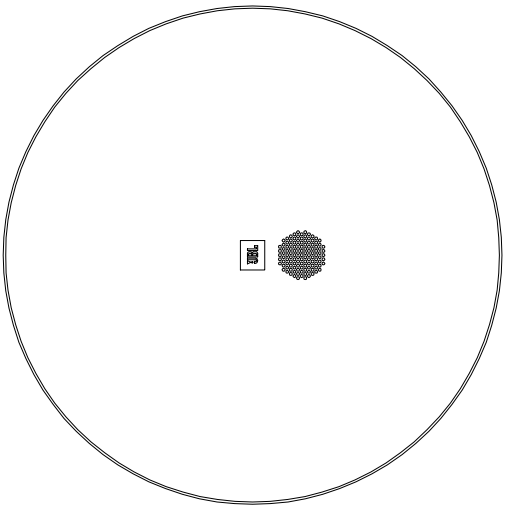
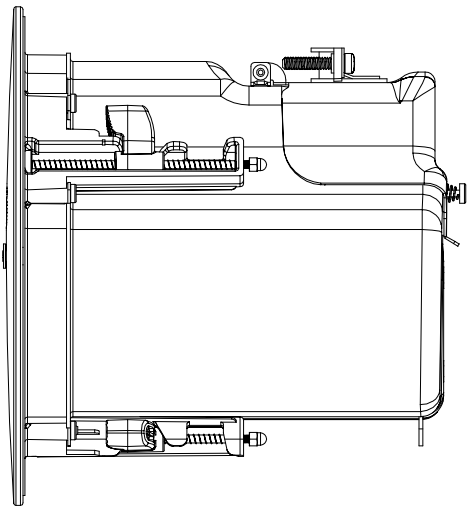
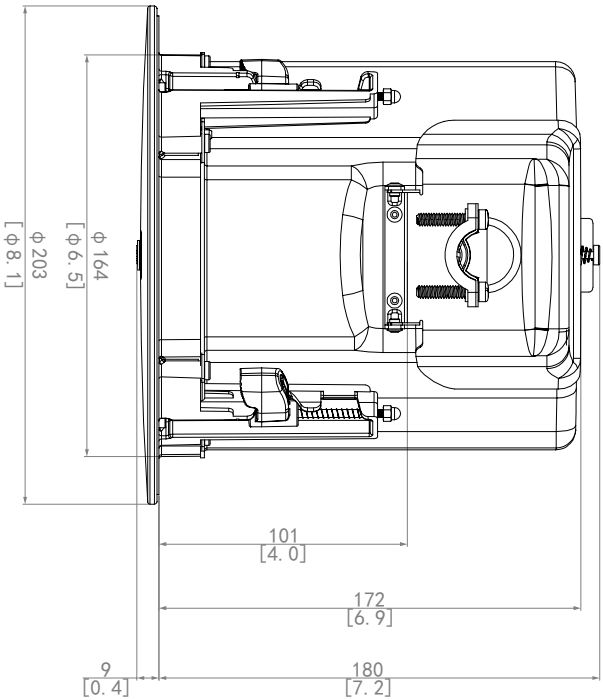
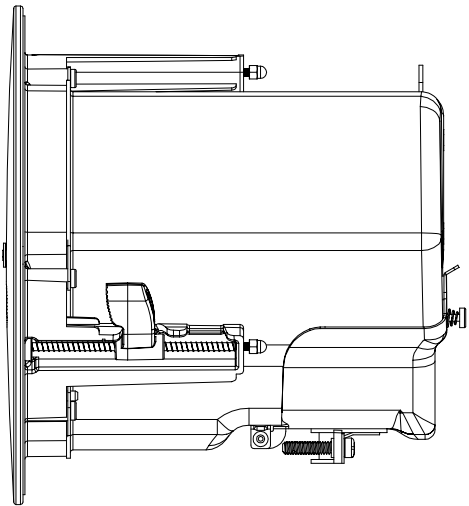
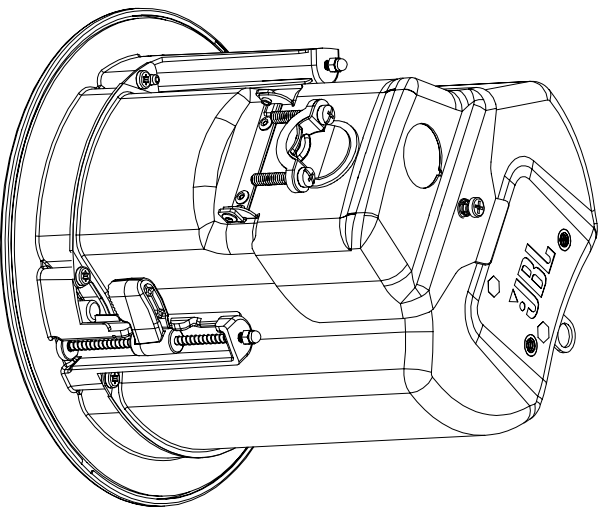
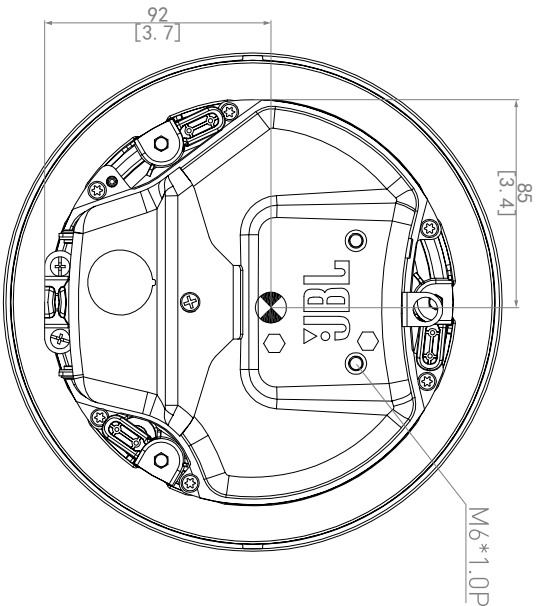


THESE DRAWINGS AND SPECIFICATIONS ARE THE PROPERTY OF JBL INCORPORATED. THEY ARE ISSUED IN STRICT CONFIDENCE AND SHALL NOT BE REPRODUCED OR USED AS THE BASIS FOR MANUFACTURE OR APPARATUS WITHOUT WRITTEN PERMISSION.

ALL MATERIAL SPECIFIED ON THIS DRAWING SHALL CONTINUALLY COMPLY WITH THE EFFECTIVE EU RoHS DIRECTIVE, CURRENTLY 2011/65/EU, INCLUDING ALL AMENDMENTS.

REVISIONS			
LTR	DESCRIPTION	DRFT	DATE
A	INITIAL RELEASE	VW	2/25/2025
APPR			



5. SYMBOL INDICATES CENTER OF GRAVITY (CG).
4. GRILLE MATERIAL: ABS+PA+SPCC.
3. WEIGHT: 2.4KG (5.29LBS).
2. FINISH: Baffle:mold texture+Back can:Powder coating.
1. CABINET MATERIAL:Baffle: PC+ABS/Back can:SPCE

NOTES: (UNLESS OTHERWISE SPECIFIED)

#### TOLERANCES

(UNLESS OTHERWISE SPECIFIED)

XXX ± .063 INCH

XX ± .125 INCH

ANGULAR TOLERANCE OF 0°±30°

FRACTIONAL DIMENSIONS ± 1/32

• DIMENSIONS ARE INCHES (MM)

• ALL DIMENSIONS ARE FINISHED DIMENSIONS

• DO NOT SCALE DRAWING

**HARMAN**

JBL Professional  
8500 Balboa Blvd  
Northridge, CA 91329  
USA

TITLE  
CUSTOMER DRAWING: C414C/T

SIZE  
**A**

DRAWING NO.  
1000382434

REV  
**A**

SCALE  
NTS

SHEET 1 OF 1