

8

7

6

5

4

3

2

1

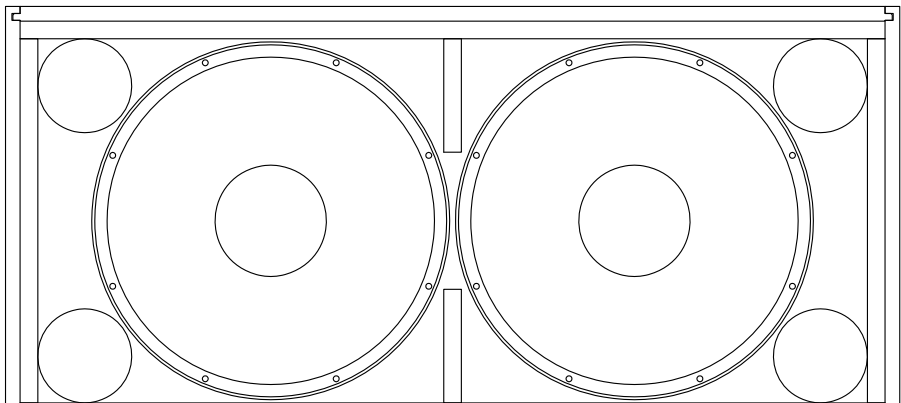
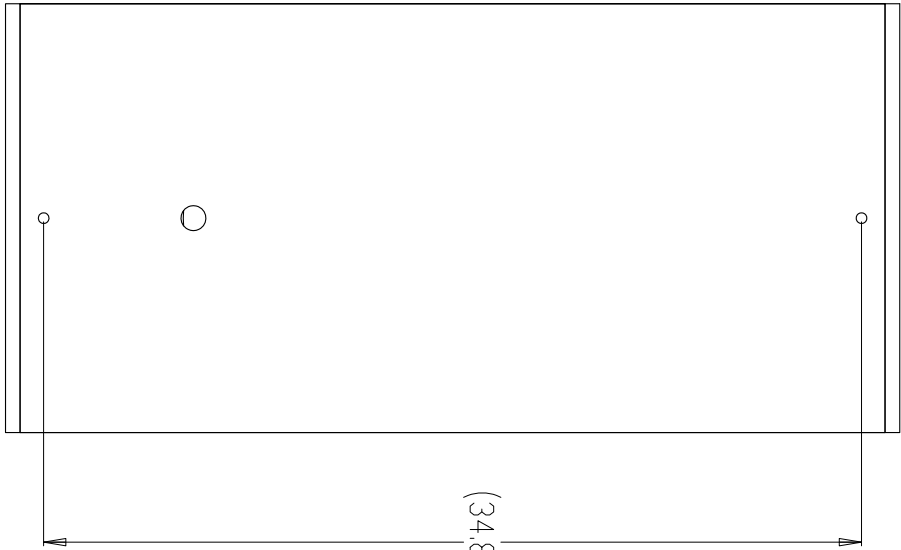
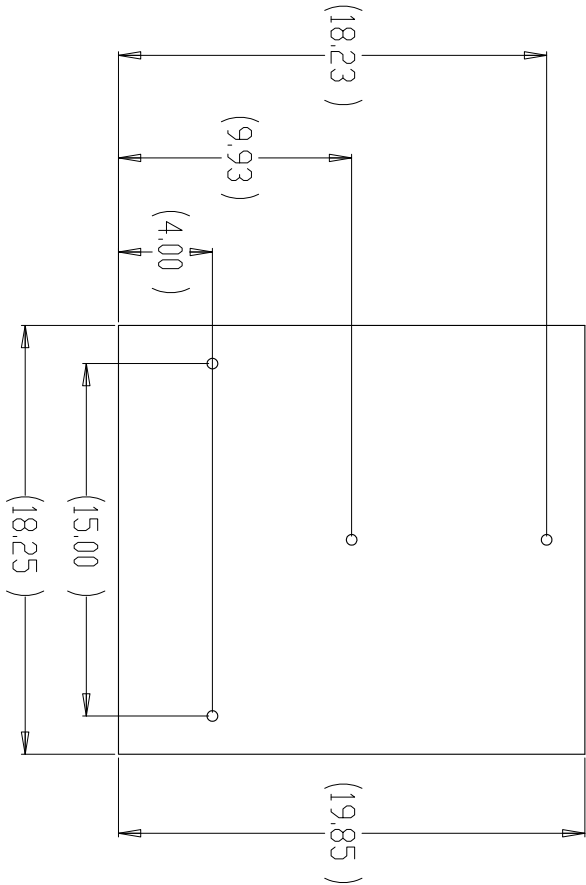
THESE DRAWINGS AND SPECIFICATIONS ARE THE PROPERTY OF JBL. UNLESS STATED OTHERWISE, THEY ARE ISSUED IN STRICT CONFIDENCE AND SHALL NOT BE REPRODUCED, COPIED, OR USED AS THE BASIS FOR MANUFACTURING OR SALE OF APPARATUS WITHOUT WRITTEN PERMISSION.

PART NO.	
----------	--

NOTES:

1. COMPONENTS: LF: 2X 2226HPL
2. SUSPENSION POINTS: 14X M10 STAINLESS STEEL
3. INPUT: DIRECT CABLE ENTRY WITH 20" TAIL
4. GRILLE: 16 GA STAINLESS STEEL WITH MOISTURE BARRIER (NOT SHOWN)
5. FINISH: GRAY FIBERGLASS
6. PORT LENGTH: TOTAL LENGTH TO BE 5.75"

		REVISIONS			
CHG	LTR	DESCRIPTION	DRAFT	CHK	DATE
	X1	First Release	DR		



A

B

C

D

A

B

C

D

NOTES: (UNLESS OTHERWISE SPECIFIED)

ITEM		PART NO.		DESCRIPTION		REMARKS/REF. P/N/S	
METRIC		TOLERANCES		DRAWN BY		DATE	
TOLERANCES-MILLIMETER		UNLESS OTHERWISE SPECIFIED		D. Rodgers		DATE	
XX ± .03 mm		XXX ± .005 INCH		D. Rodgers		DATE	
X ± .02 mm		X ± .020 INCH		DATE		TITLE	
ANGULAR ± 0°30'		ANGULAR ± 10°		DATE		ASB6125-WRX	
FRACTIONAL ± 1/32		FRACTIONAL ± 1/32		DATE		JBL Professional Custom Shop	
DIMENSIONS ARE IN INCHES		DIMENSIONS ARE IN INCHES		THIRD ANGLE PROJECTION		JBL Professional Custom Shop	
BREAK SHARP EDGES 0.1 mm		BREAK SHARP EDGES 0.05 mm		SCALE: 1/1		A Hornum International Company	
ALL DIMENSIONS ARE FINISHED DIMENSIONS		ALL DIMENSIONS ARE FINISHED DIMENSIONS		SHEET 1 OF 1		Northridge, California 91329, U.S.A.	
DO NOT SCALE DRAWING		DO NOT SCALE DRAWING		REV		ASB6125-WRX	
				D		X1	

UNCONTROLLED COPY

8

7

6

5

4

3

2

1