

Configure multi-zone applications quickly and easily with ZonePRO™ Designer

CONFIGURATION WIZARD

The Configuration Wizard within ZonePRO Designer guides users through the step-by-step configuration process.



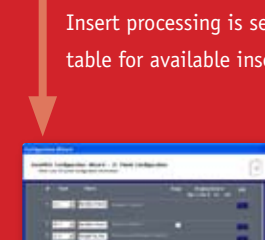
SOURCE CONFIGURATION

Names are given to the physical audio inputs. Stereo checkboxes allow adjacent inputs to be configured as a stereo pair. Insert processing is selected for each of the two Input DSP Insert positions (see table for available inserts).



ZONE CONFIGURATION

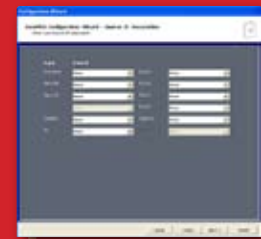
Names are given to the physical audio outputs. Route/Mix button selections determine whether inputs are to be routed or mixed to each output. A Crossover Configuration dropdown list allows various crossover configurations to be selected.



ZC PANEL CONFIGURATION

Up to 12 Zone Controllers can be assigned, named and configured. A Page checkbox allows the function of ZC-3 and ZC-4 controllers to be changed from the default Source Control to Page Steer Control. Volume range limiting, source configuration and

page steering are configured as appropriate for each Zone Controller.



SOURCE ZC ASSOCIATION

Volume control Zone Controllers can be configured to control the volumes of audio inputs. A single Zone Controller can be configured to control multiple inputs.



ROUTING AND ZONE ZC ASSOCIATION

Discrete sources or source selection Zone Controllers can be selected as a Source. If a Zone Controller is selected then the Source will follow the Zone Controller in accordance with the previous source

assignment. An input can be nominated, per output zone, as a Priority – this input will override the Source when present. An input can also be nominated, per output zone, as a Page – this input will override any nominated Priority input and Source. Volume control Zone Controllers can be configured to control the volumes of output zones.



FRONT PANEL CONFIGURATION

Checkboxes and sliders allow, or restrict, access to ZonePRO parameters from the front panel of the device. Page steering presets, which can later be accessed from the front panel, can also be configured.

	Input DSP Insert 1	Input DSP Insert 2	Output DSP Insert
None	✓	✓	✓
Automatic Gain Control (AGC)	✓	✓	✓
Notch Filter	✓	✓	
Compressor	✓	✓	✓
Gate	✓	✓	
De-Esser	✓	✓	
Advanced Feedback Suppression (AFS™)	✓	✓	
Limitter			✓

AutoWarmth™, a psychoacoustic function that maintains full frequency bandwidth even when the signal level has dropped, is permanently available on each output zone.

ZonePRO DESIGNER

ZonePRO Designer represents a quick and easy way to configure ZonePRO devices for a large range of multi-zone applications, including digital zone processing for retail environments, restaurants, bars, health clubs and nightclubs.

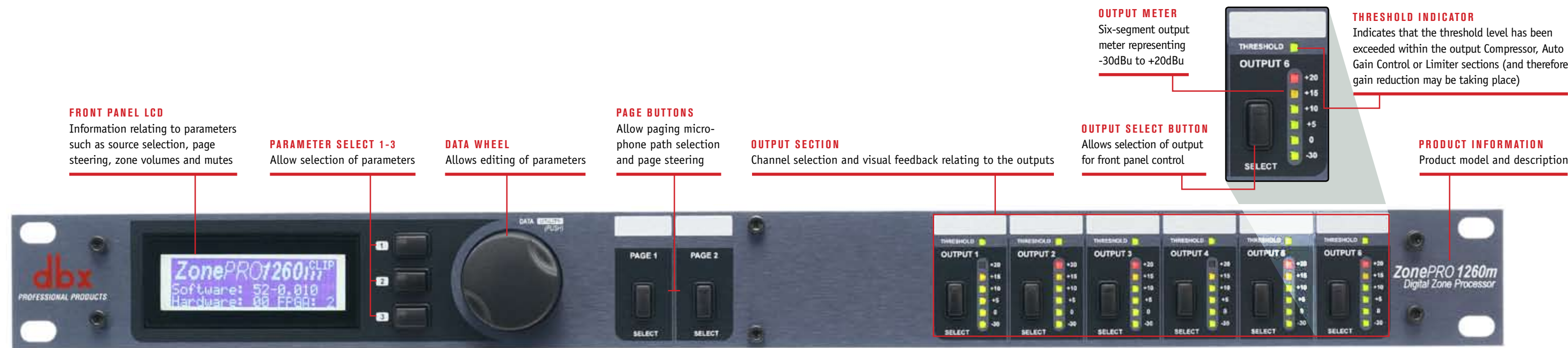


dbx Professional Products
8760 South Sandy Parkway
Sandy, Utah 84070
801.566.8800

dbx
PROFESSIONAL PRODUCTS

dbx
PROFESSIONAL PRODUCTS

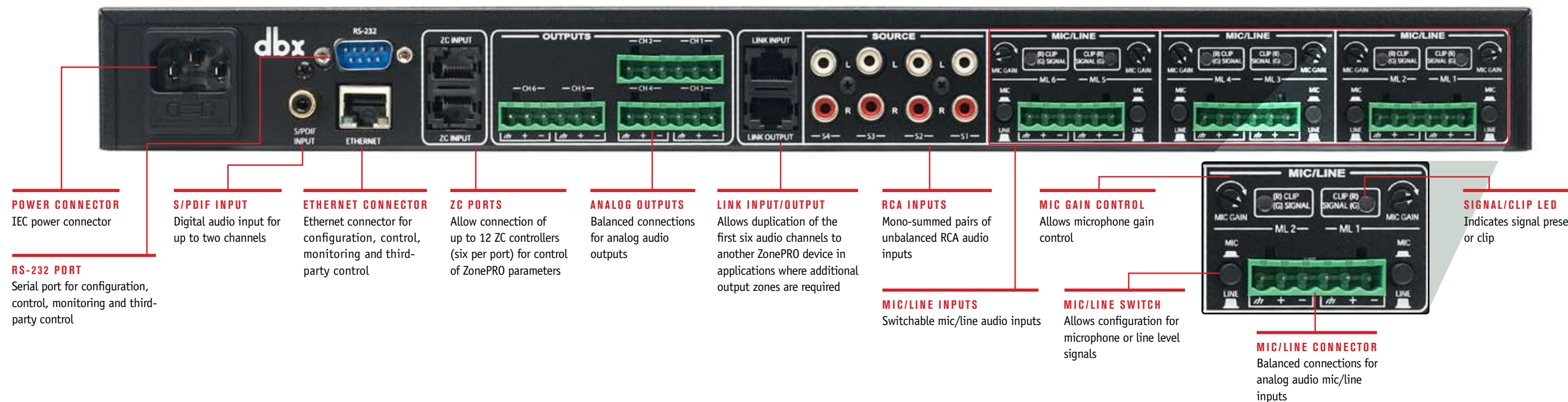
dbx Professional Products provides the Wizard so you can perform the magic...



The ZonePRO™ family of Digital Zone Processors consists of eight devices with different functionality (see table below). Each device, with optional control from an extensive range of Zone Controllers, represents an inexpensive and quickly-deployed solution for a diverse range of commercial audio applications. The Configuration Wizard guides you through the step-by-step configuration process, ensuring that you go from requirements to solution in just a few mouse clicks.

	Inputs	Outputs	Front Panel Control	Mic Preamps	S/PDIF	Ethernet	Mix Functionality	ANC*
1260m	12	6	✓	6	✓	✓	✓	✓
1260	12	6	✓	2	✓	✓	✓	
1261m	12	6		6	✓	✓	✓	✓
1261	12	6		2	✓	✓	✓	
640m	6	4	✓	4		✓	✓	✓
640	6	4	✓	2				
641m	6	4		4		✓	✓	✓
641	6	4		2				

*Ambient Noise Compensation



Zone Controllers

The Zone Controllers use analog DC voltages to provide logic control ranging from volume and mute control to contact closure preset selection and can be used with the ZonePRO family. Wired with readily available and affordable CAT5 cable with universally accepted RJ-45 connectors, the ZC Zone Controllers offer simple yet elegant solutions to the contractor.

