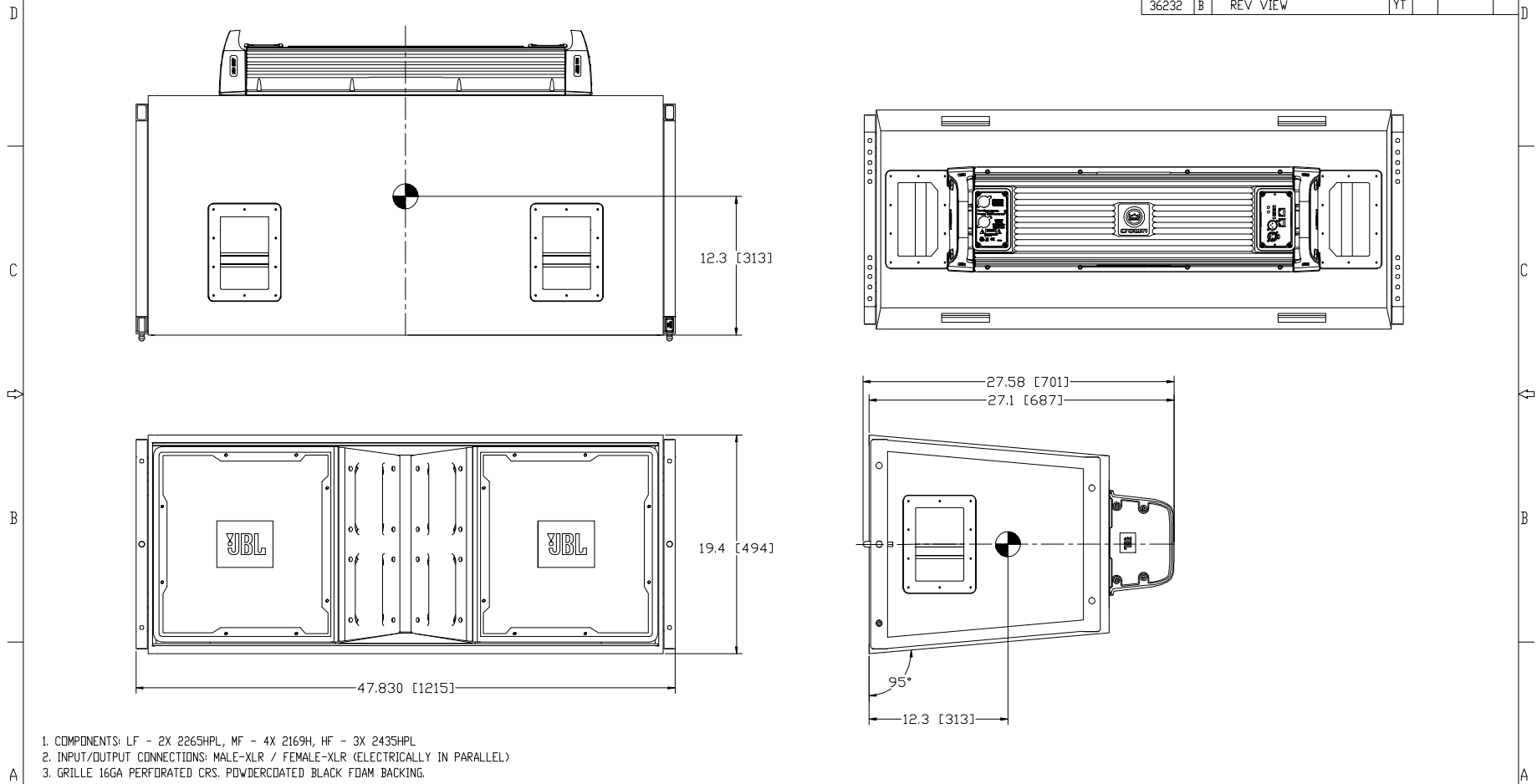


THESE DRAWINGS AND SPECIFICATIONS ARE THE PROPERTY OF JBL INCORPORATED THEY ARE ISSUED IN STRICT CONFIDENCE AND SHALL NOT BE REPRODUCED, COPIED, OR USED AS THE BASIS FOR MANUFACTURING OR SALE OF APPARATUS WITHOUT WRITTEN PERMISSION.

ALL MATERIAL SPECIFIED ON THIS DRAWING SHALL COMPLY WITH EUROPEAN DIRECTIVE 2002/95/EC. **RoHS**

		REVISIONS					
CHG	LTR	DESCRIPTION	DRFT	CHK	DATE	APPR	
35697	A	RELEASE FOR MARKETING	YT		2/21/08	BW	
36232	B	REV VIEW	YT				



- COMPONENTS: LF - 2X 2265HPL, MF - 4X 2169H, HF - 3X 2435HPL
- INPUT/OUTPUT CONNECTIONS: MALE-XLR / FEMALE-XLR (ELECTRICALLY IN PARALLEL)
- GRILLE 16GA PERFORATED CRS. POWDERCOATED BLACK FOAM BACKING.
- MATERIALS: 18MM BIRCH PLYWOOD AND 18MM LITE-PLY.
- FINISH: BLACK DURAFLEX.
- SUSPENSION SYSTEM: JBL PROPRIETARY HINGE-BARS, BALL LOCK PINS AND RIGGING FRAMES.
- WEIGHT: 92.1 KG (203 LBS)
- CENTER OF GRAVITY (CG).

NOTES: (UNLESS OTHERWISE SPECIFIED)

UNCONTROLLED COPY

<b>TOLERANCES</b> UNLESS OTHERWISE SPECIFIED: XXXX ± 0.031 INCH XXX ± 0.063 INCH XX ± 0.125 INCH ANGULAR ± 30°		<b>JBL Professional</b> A Harman International Company Northridge, California 91329, USA	
TITLE CUSTOMER DWG VT4889ADP, -AN, -CN		DRAWING NO. 365191	
SIZE D	REV B	SCALE 1:4	SHEET 1 OF 1