

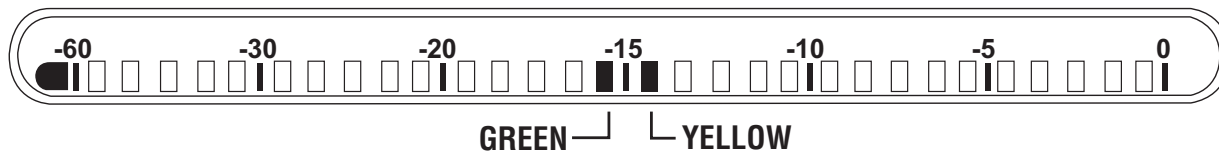
# Important Information

## About LSR4300 Firmware

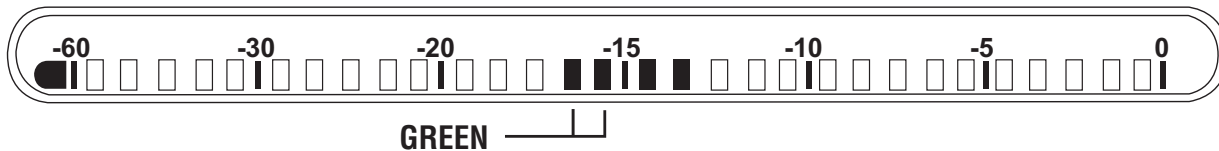
When using speakers and subwoofers in a system, the version of firmware installed in all units must be the same. LSR4328P, LSR4326P speakers produced after October 2006 and LSR4312SP Subwoofers ship with version 2.0 or later installed. LSR4326P and LSR4328P speakers produced prior to October 2006 ship with firmware version 1.1 installed and to use these speakers with a subwoofer or recently produced LSR4300 speakers, the firmware must be updated. A firmware update application, the required files, and installation procedures are provided on a CD-ROM supplied with the subwoofer also in new LSR4300 Accessory Kits, and also are available for download at [www.jblpro.com/lsr](http://www.jblpro.com/lsr). For specific information about the features of the specific firmware version, read the Firmware Version Read Me file associated with the firmware.

To determine if the firmware in associated LSR4300 speakers requires an update, determine the firmware version currently installed in each speaker using this procedure:

- Remove the power cord from the loudspeaker.
- Reconnect the power cord to the loudspeaker.
- Following a brief (2 second) start-up sequence, the front panel display will freeze for approximately 5 seconds with all buttons illuminated and the firmware version displayed on the level meter. The firmware version should be read as follows:
  - The number of green LEDs to the left of the -15dB mark indicate the 1's digit of the firmware version.
  - The number of yellow LEDs to the right of the -15 dB mark indicate the 1/10ths digit of the firmware version.
  - For example. Firmware v1.1 will be displayed as follows:



- Firmware v2.2 will be displayed as follows:



If your Studio Monitors have firmware version 1.1 installed, use the firmware update application to update each Studio Monitor to version 2.0 or later. Before proceeding, read the READ-ME file associated with the firmware files. Copy the contents of the CD to a Macintosh computer with OS10.3 operating system (or later) or a PC with Windows 2000, XP operating system (or later) . Click on the Flash Update application for Mac or Windows and follow the prompts.

### Notes:

- Using LSR4300 speakers with differing firmware versions is not harmful to any of the speakers. However, when speakers are connected together in a network, features will not work correctly.
- Firmware update is not required unless you plan to introduce a subwoofer or newer LSR4300 speaker into an existing system.

If you experience any difficulties, go to [www.jblpro.com/lsr](http://www.jblpro.com/lsr) for the latest information related to the firmware. Or contact:

JBL Customer Service (Monday through Friday)

8:00am - 6:00pm Central Time In the U.S.A.

+1 (844) 776-4899

[https://jblpro.com/en-US/support/tech\\_support](https://jblpro.com/en-US/support/tech_support)

# LSR4300 FIRMWARE UPDATE PROCEDURE

The following reviews the steps required to update firmware in LSR4300 Studio Monitors.

To install firmware files located on the CD-ROM:

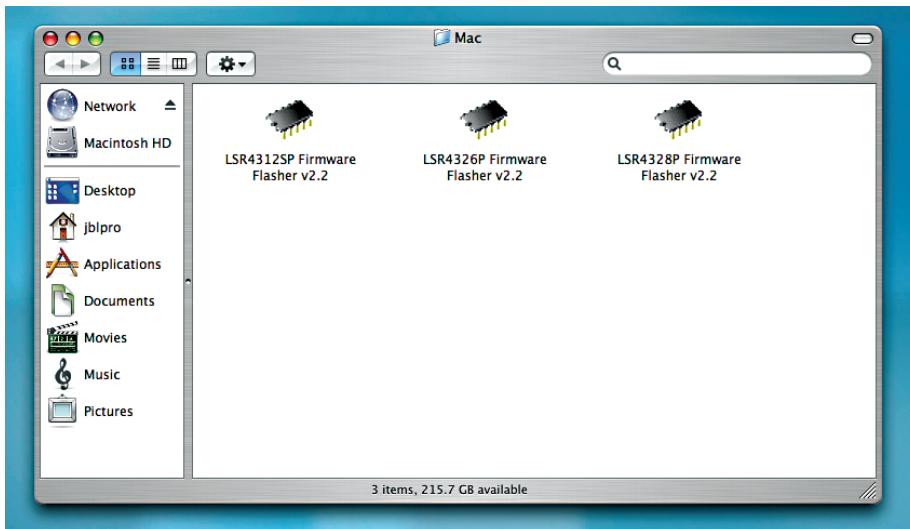
Drag the Firmware 2.0 (or later) folder from the CD-ROM to your computer desk top.



To install firmware files downloaded from the JBL website:

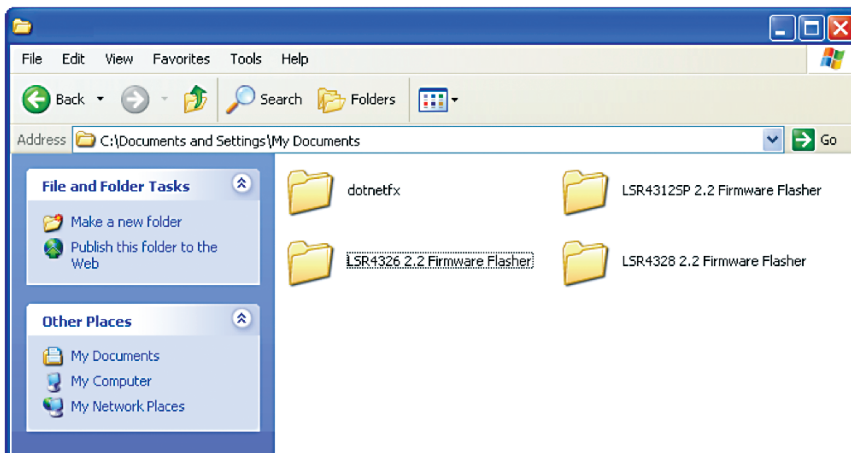
If the firmware updater is downloaded from the JBL website, the .ZIP file can be extracted for you via Safari Web Browser ( on a Macintosh Computer), or using Stuffit Expander for Macintosh, available at [http://www.apple.com/downloads/macosx/system\\_disk\\_utilities/stuffitexpander.html](http://www.apple.com/downloads/macosx/system_disk_utilities/stuffitexpander.html), or an appropriate expander for Windows-based computers.

Connect the computer to the speaker USB port using a USB cable. For LSR4328P, LSR4326P model speakers, activate the LEFT Dip (set switch to the UP position) and make sure all other DIP Switches are OFF (or down.) For LSR4312SP subwoofers, activate the SUB 1 DIP Switch (set switch to RIGHT position) and turn other dip switches OFF (LEFT).

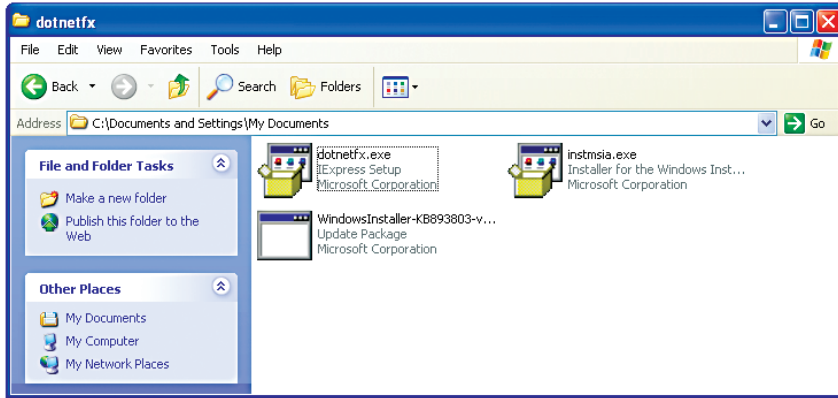


**Macintosh:** You will see three icons. Click on the correct icon for the speaker model you intend to update.

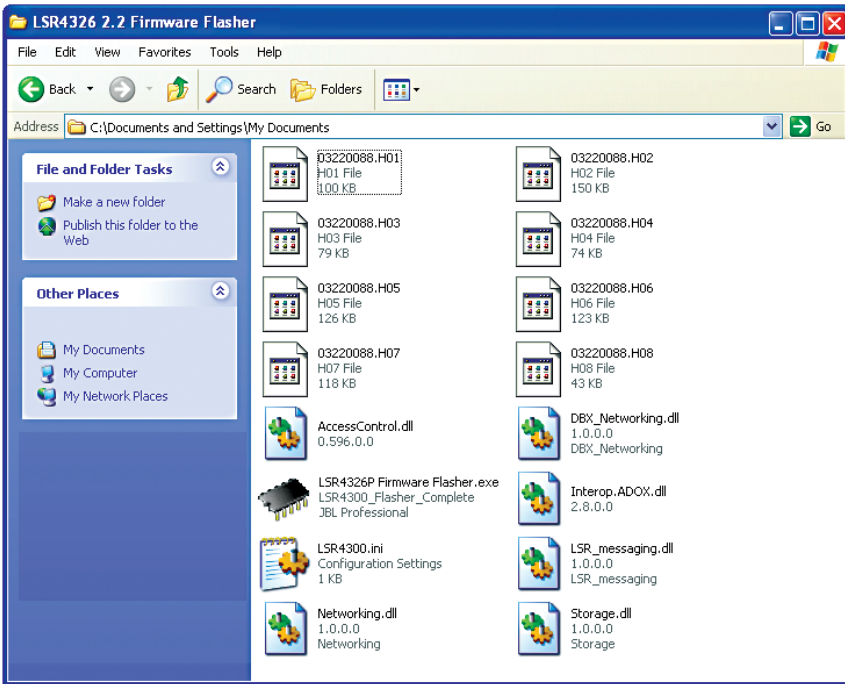
**Windows:** For Windows operating system you will see these folders:



Before installing the actual firmware you must install the DOTNETFX file. Open the dotnetfx folder.



Click on “dotnetfx.exe”. Installation of this file takes several minutes.

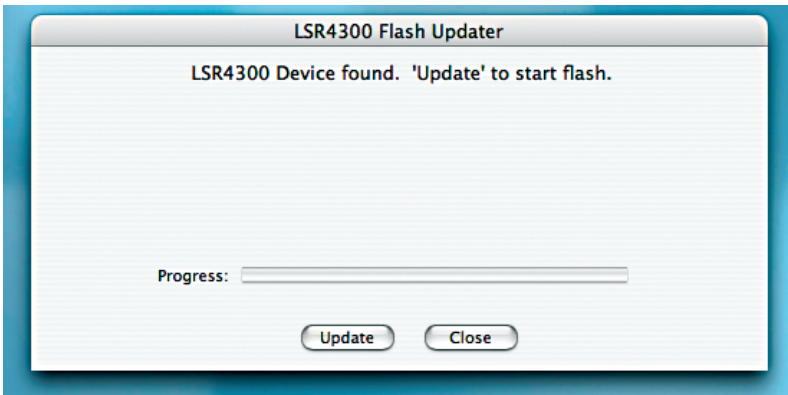


When installation of “dotnetfx” is complete, click on the folder and correct file type for the speaker model to be updated.

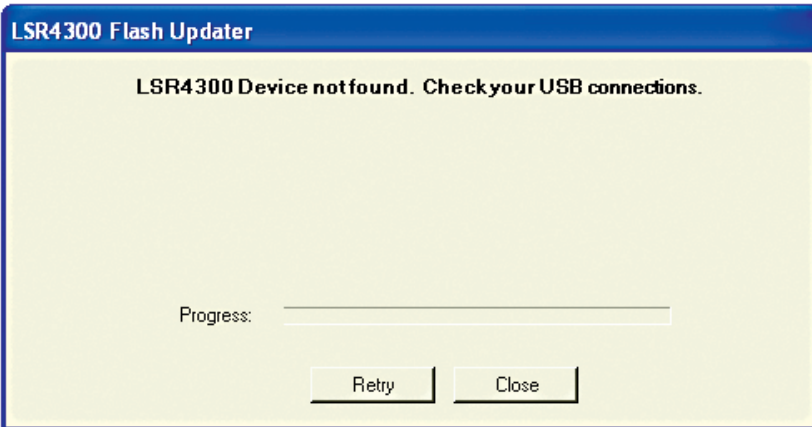
**MAC and Windows** – You will see the following images on your screen. Follow the instructions exactly to perform the firmware update and repeat the procedure for each speaker in the system that requires an update.



STEP 1: After completing the steps shown on your screen, click OK



Click UPDATE to start the firmware update process.



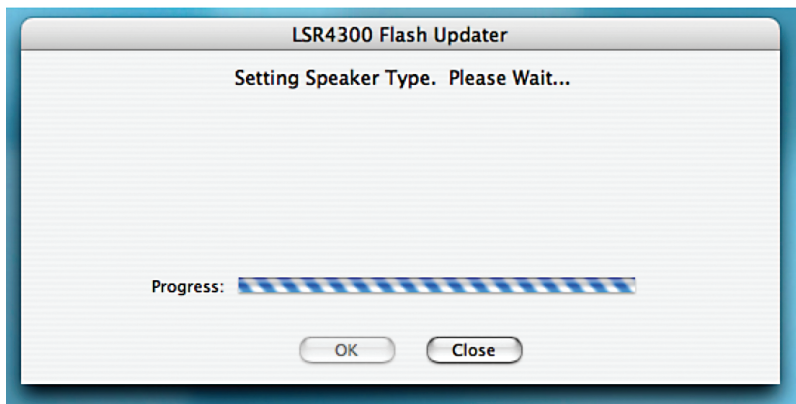
If this screen does not appear, you will see the above screen. Check USB connections, follow the directions on the display for STEP 1 above.



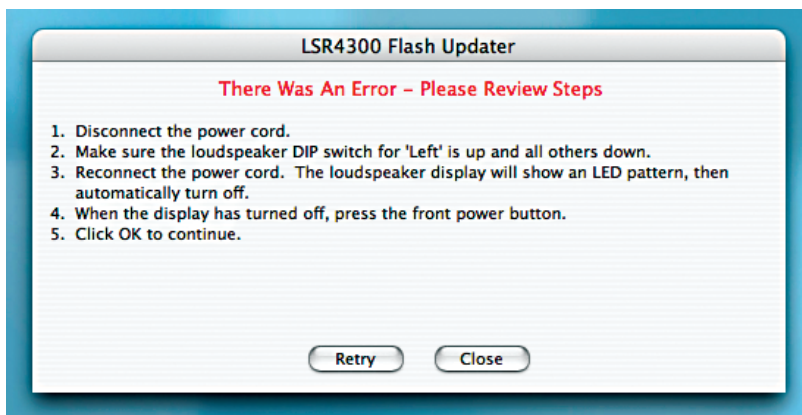
You will see this display as the firmware update procedure progresses.



STEP 2 - When the "progress bar" is completely filled with blue perform the steps above exactly as written.



After completing step 2, you will see this display.



If STEP 2 was not performed correctly this message will appear. Follow the directions on this screen.



When STEP 2 is performed correctly, the process will complete itself and this message will appear.