

# JBL Desire Pro | D Ultra

12-Inch Full-Range Speaker



## Product Review

### D Ultra Overview

Built on JBL's more than 75 years of iconic sound heritage, the D Ultra is a two-way, 310 mm LF driver professional loudspeaker designed specifically for entertainment and KTV applications. Beyond its exceptional audio performance, the D Ultra features a refined, stylish, and luxurious design that enhances any venue—from commercial halls and restaurant lounges to corporate hospitality spaces, KTV rooms, and employee recreation areas—integrating listening, singing, and visual entertainment into one solution.

### Superior Sound Performance

Delivering crystal-clear highs and powerful low-frequency impact, the D Ultra offers an extraordinary tonal character that meets the high demands of professional audio environments. It incorporates a uniquely tuned 310 mm low-frequency driver and a 1-inch compression high-frequency driver, providing bright, detailed sound with excellent dispersion and high sensitivity. The robust magnetic system withstands the immense acceleration forces generated during high-power output. The LF driver includes an internal demodulation and heat-dissipating aluminum shorting ring to minimize distortion and reduce power compression.

### Innovative Design & Reliability

With its detachable grille and acoustically optimized filter ports, the D Ultra ensures stable output even under high-intensity operation. Upholding JBL's uncompromising quality standards, the speaker undergoes rigorous testing to guarantee superior sound performance and long-term durability, delivering reliable operation for any venue.

### Flexible Installation

The D Ultra supports both horizontal and vertical mounting configurations, meeting diverse on-site requirements. Its rotatable logo and distinctive color scheme reflect JBL's commitment to redefining market expectations. Whether used for main reinforcement, 2.1 systems, or 5.1 configurations, the D Ultra delivers exceptional versatility.

### All-New Exterior Design

Featuring a gold-finished frame with a metallic sheen and a unique gold-edged JBL logo, the design preserves professional entertainment characteristics while introducing an emotional, stylish element. The grille is crafted from tri-color woven fiber strips, harmonizing with the overall color scheme while enhancing acoustic transparency to ensure JBL's signature sound is perfectly expressed.

## Features

### ▶ Detachable Grille Design

This technology is designed to enhance speaker maintenance convenience and aesthetic appeal while maintaining stable acoustic performance.

### ▶ Front-Loaded Design

Calibrated by JBL Entertainment acoustic engineering to reduce rear-wall interference, improving sound quality and delivering impactful low-frequency performance.

### ▶ All-New ID Design

Gold accents and a luxurious, understated grille convey a modern, stylish concept.

### ▶ High-Frequency Protection

Tweeter overcurrent protection technology from excessive power, ensuring uninterrupted performance.

## Highlights

### JBL Sound Performance

The sound system has been meticulously tuned by JBL engineers to deliver exceptional audio quality while accommodating diverse needs such as music playback, vocals, and karaoke. It preserves JBL's signature style while ensuring flexibility for various application scenarios.

### Detachable Grille

A innovation and refined exterior combined with modern aesthetics, featuring a removable grille for easy maintenance and cleaning. Users can remove it effortlessly without professional tools, enhancing convenience.

### High Performance

Incorporates JBL Entertainment's Tweeter overcurrent protection technology, effectively preventing power overload interruptions and ensuring smooth, continuous sound output. Rigorously tested to support long-term, high-intensity operation with consistent audio performance.

### ▶ Flexible Installation

Multi-purpose mounting points support both vertical and horizontal installation to meet different preferences.

### ▶ Rotatable JBL Logo

Keeps the brand logo correctly oriented for both horizontal and vertical setups.

### ▶ High-Sensitivity Performance

Features 310 mm low-frequency drivers and a 1-inch compress high-frequency driver, suitable main reinforcement or 2.1/5.1 system application.

### ▶ High Acoustic Transparency

Grille aperture is precisely calculated to minimize sound reflection and attenuation, ensuring natural reproduction of both high and low frequencies.

### ▶ Structural Strength and Durability

Constructed with high-strength composite materials to balance protection and acoustic performance, preventing external impact or dust ingress. This technology optimizes grille hole size, arrangement, and material properties to achieve superior acoustic transparency, ensuring sound transmission without obstruction while maintaining an attractive and protective exterior.

## Specifications

System Type	JBL D Ultra 12" (310 mm) Full-Range Speaker
Frequency Range (-10 dB) <sup>1</sup> :	55 Hz - 22 kHz
Frequency Response (±3 dB) <sup>1</sup> :	75 Hz - 20 kHz
Coverage (H × V):	90° × 70°
System Power Rating <sup>3</sup> : (continuous/music/peak)	350 W / 700 W / 1400 W
Maximum SPL (1 m) <sup>2</sup> :	120 dB (132 dB peak)
System Sensitivity (4π):	95 dB
Nominal Impedance:	8 ohms
<b>Transducers</b>	
LF Driver:	1 × 12" (310 mm) woofer
HF Driver:	1 × JBL 2414H-C
<b>Appearance</b>	
Cabinet material:	High-quality MDF
Finish:	High-quality PVC finish
Grille:	Tri-color fabric
Input Connector:	NL4 Speakon® in parallel with binding post
Dimensions (H × W × D):	687 × 371 × 399 mm
Net Weight:	22.3 kg

### Footnotes:

1: Measurement conducted under full-space (4π) conditions.

2: Peak, unweighted SPL, measured under full-space conditions at 1 meter using broadband pink noise with a 12dB crest factor.

3: Testing conducted for 2 hours under pink noise with a crest factor of 6dB, in accordance with IEC standards.

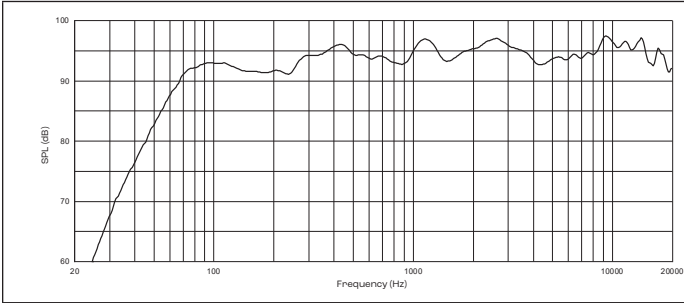
JBL is consistently dedicated to product updates. It integrates new materials, manufacturing processes, or improved designs into existing products without additional notifications. As a result, some of the current JBL products may differ from the descriptions provided in product literature. Unless otherwise stated, these updated products perform equivalently or surpass the original designs in terms of performance or specifications.

# JBL Desire Pro | D Ultra

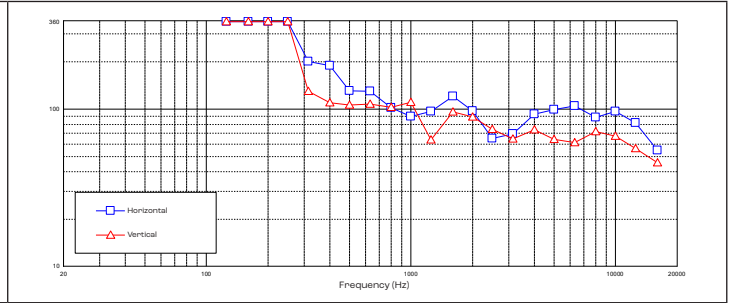
12-Inch Full-Range Speaker



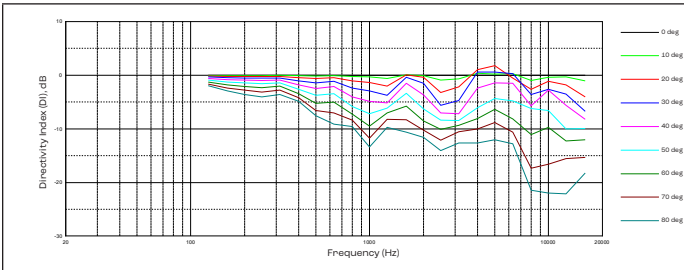
Frequency Response:



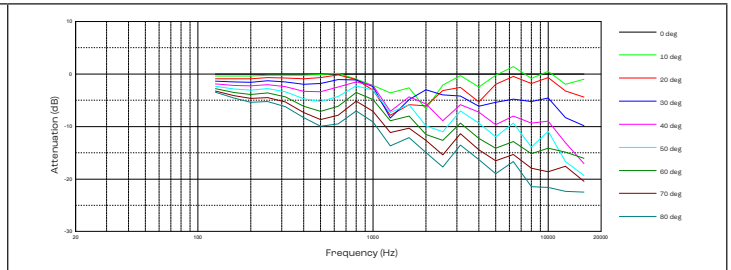
Beamwidth:



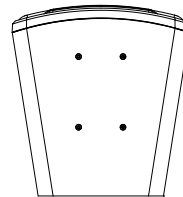
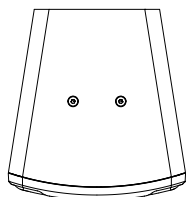
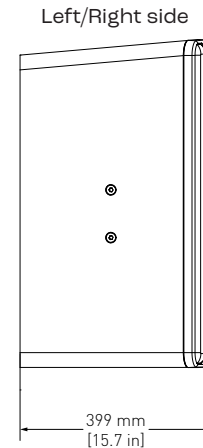
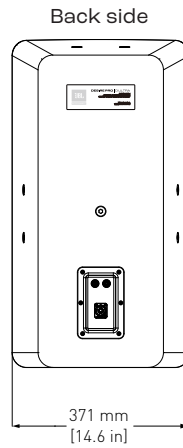
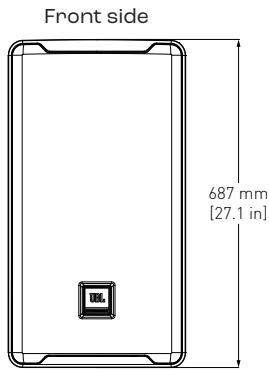
Horizontal off-axis frequency response:



Vertical off-axis frequency response:



## Dimensions



Classification	Position	Specification	Quantity
Suspension	Top	M10 × 35mm	2
	Sides	M10 × 35mm	4
Angel adjusted point	Back	M10 × 35mm	1
Pole mount plate	Bottom	M6 × 25mm	4



Harman Professional, Inc. 8500 Balboa Blvd., Northridge, CA 91325, USA

© 2026 HARMAN International Industries, Incorporated. All rights reserved. Features, specifications and appearance are subject to change without notice.

| www.jblpro.com | 5154346-00 | Version: B | EN

Release date: 202602