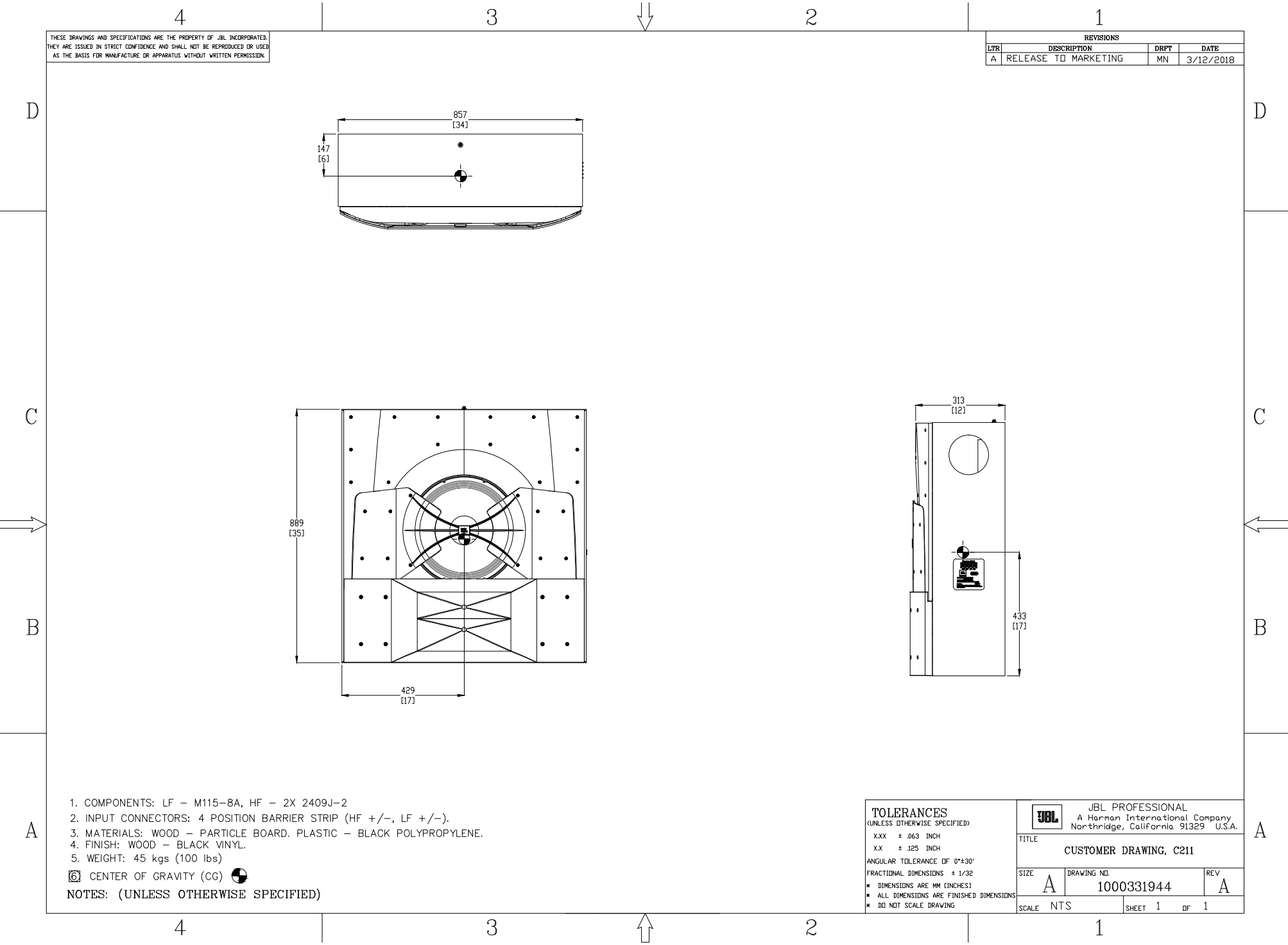


THESE DRAWINGS AND SPECIFICATIONS ARE THE PROPERTY OF JBL INCORPORATED. THEY ARE ISSUED IN STRICT CONFIDENCE AND SHALL NOT BE REPRODUCED OR USED AS THE BASIS FOR MANUFACTURE OR APPARATUS WITHOUT WRITTEN PERMISSION.

REVISIONS			
LTR	DESCRIPTION	DRPT	DATE
A	RELEASE TO MARKETING	MN	3/12/2018



1. COMPONENTS: LF - M115-8A, HF - 2X 2409J-2
2. INPUT CONNECTORS: 4 POSITION BARRIER STRIP (HF +/-, LF +/-).
3. MATERIALS: WOOD - PARTICLE BOARD. PLASTIC - BLACK POLYPROPYLENE.
4. FINISH: WOOD - BLACK VINYL.
5. WEIGHT: 45 kgs (100 lbs)

Ⓞ CENTER OF GRAVITY (CG)

NOTES: (UNLESS OTHERWISE SPECIFIED)

TOLERANCES (UNLESS OTHERWISE SPECIFIED)	
.XXX	± .063 INCH
.XX	± .125 INCH
ANGULAR TOLERANCE OF 0°±30'	
FRACTIONAL DIMENSIONS ± 1/32	
* DIMENSIONS ARE MM (INCHES)	
* ALL DIMENSIONS ARE FINISHED DIMENSIONS	
* DO NOT SCALE DRAWING	

		JBL PROFESSIONAL A Harman International Company Northridge, California 91329 U.S.A.	
TITLE CUSTOMER DRAWING, C211			
SIZE A	DRAWING NO. 1000331944	REV A	
SCALE NTS	SHEET 1	OF 1	