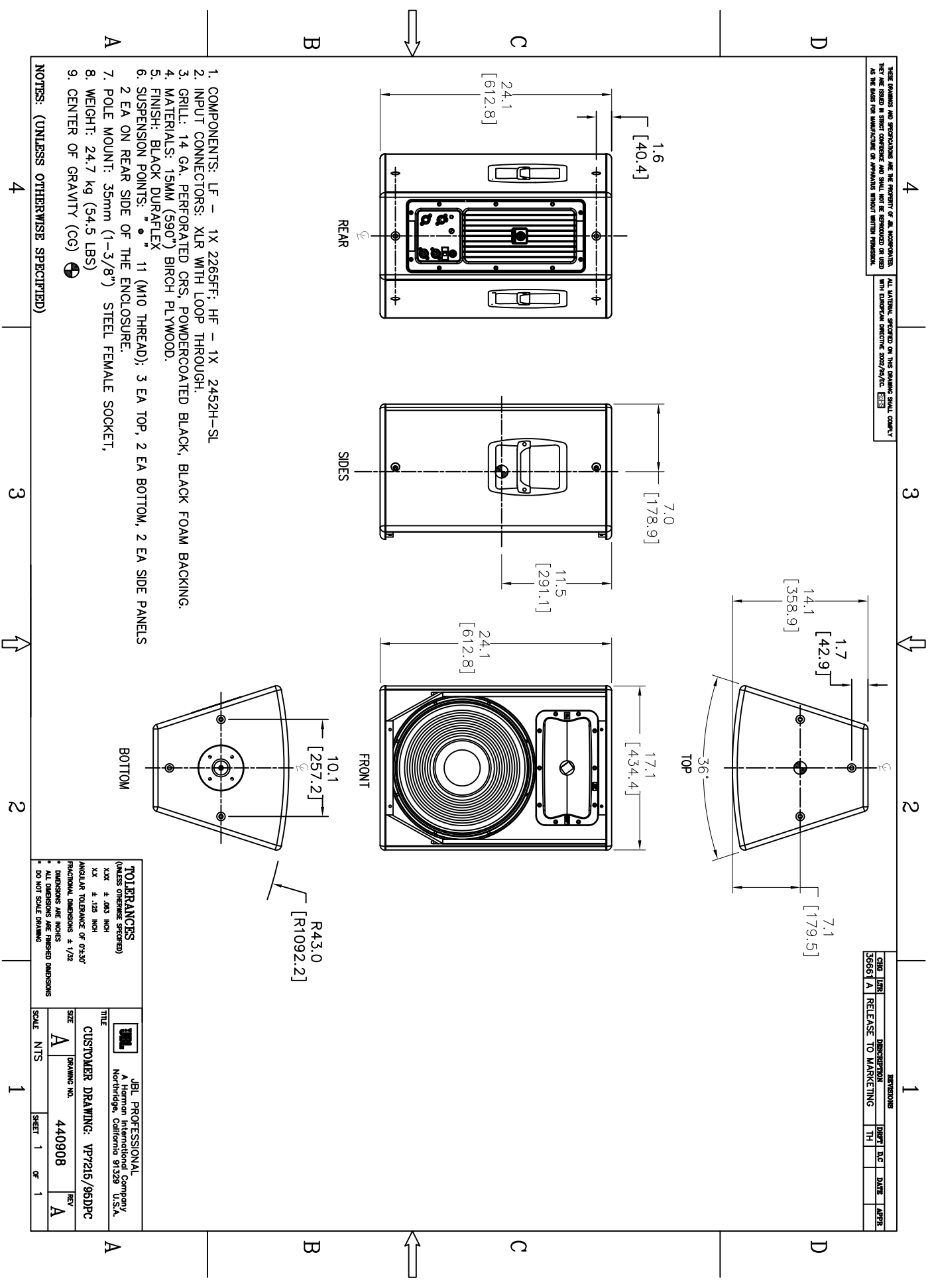


THESE DRAWINGS AND SPECIFICATIONS ARE THE PROPERTY OF JBL, INCORPORATED. ALL MATERIAL SPECIFIED ON THIS DRAWING SHALL COMPLY WITH THE STANDARDS IN STRICT COMPLIANCE AND SHALL NOT BE REPRODUCED OR USED AS THE BASIS FOR MANUFACTURE OR REPAIRS WITHOUT WRITTEN PERMISSION.

CHG. ITR	DESCRIPTION	DRWT. D.C.	DATE	APP.
36661 A	RELEASE TO MARKETING	TH		



1. COMPONENTS: LF - 1X 2265FF; HF - 1X 2452H-SL
2. INPUT CONNECTORS: XLR WITH LOOP THROUGH.
3. GRILL: 14 GA., PERFORATED CRS, POWDERCOATED BLACK, BLACK FOAM BACKING.
4. MATERIALS: 15MM (590°) BIRCH PLYWOOD.
5. FINISH: BLACK DURAFLEX
6. SUSPENSION POINTS: "•" 11 (M10 THREAD); 3 EA TOP, 2 EA BOTTOM, 2 EA SIDE PANELS
- 2 EA ON REAR SIDE OF THE ENCLOSURE.
7. POLE MOUNT: 35mm (1-3/8") STEEL FEMALE SOCKET,
8. WEIGHT: 24.7 kg (54.5 LBS)
9. CENTER OF GRAVITY (CG)

NOTES: (UNLESS OTHERWISE SPECIFIED)

TOLERANCES (UNLESS OTHERWISE SPECIFIED)	
XXX	± .125 INCH
XX	± .063 INCH
XX	± .063 INCH
ANGULAR TOLERANCE OF 0°-30°	
FRACTIONAL DIMENSIONS ± 1/32"	
ALL DIMENSIONS ARE FINISHED DIMENSIONS	
DO NOT SCALE DRAWING	

JBL PROFESSIONAL		JBL	
A Division of Harman International Company		A Division of Harman International Company	
No. 3800, Culver City, CA 90230, U.S.A.		No. 3800, Culver City, CA 90230, U.S.A.	
TITLE: CUSTOMER DRAWING: VP7215/85DPC			
SIZE: A	DRAWING NO.: 440908	REV: A	REV: A
SCALE: NTS	SHEET: 1	OF: 1	OF: 1