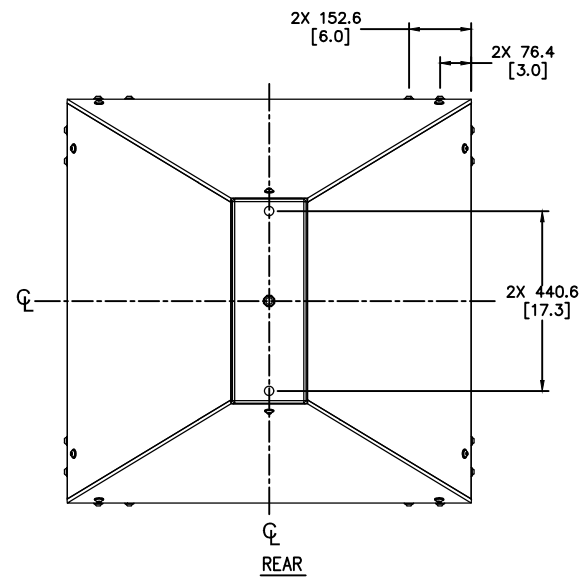
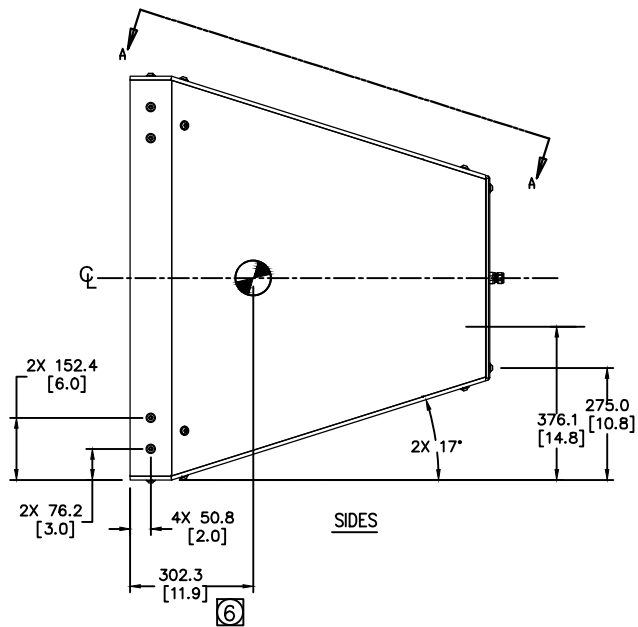
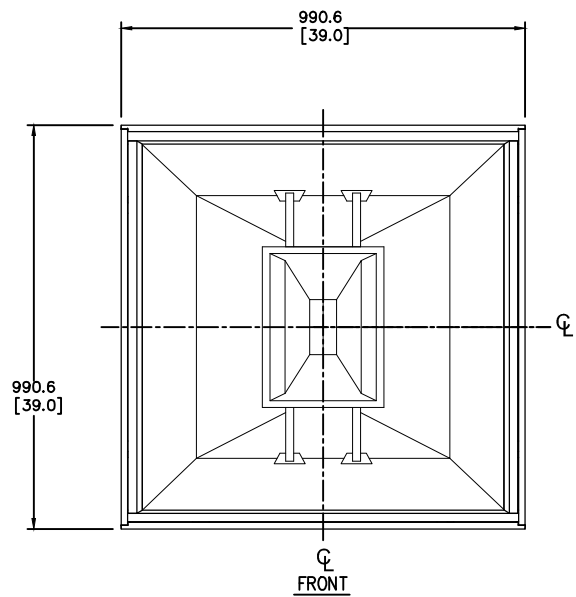
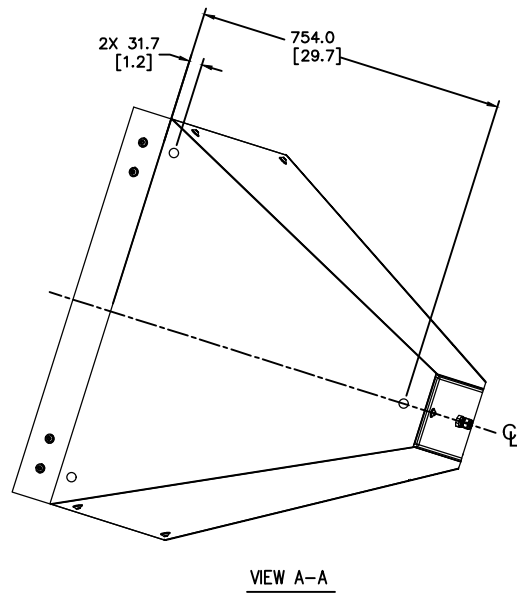
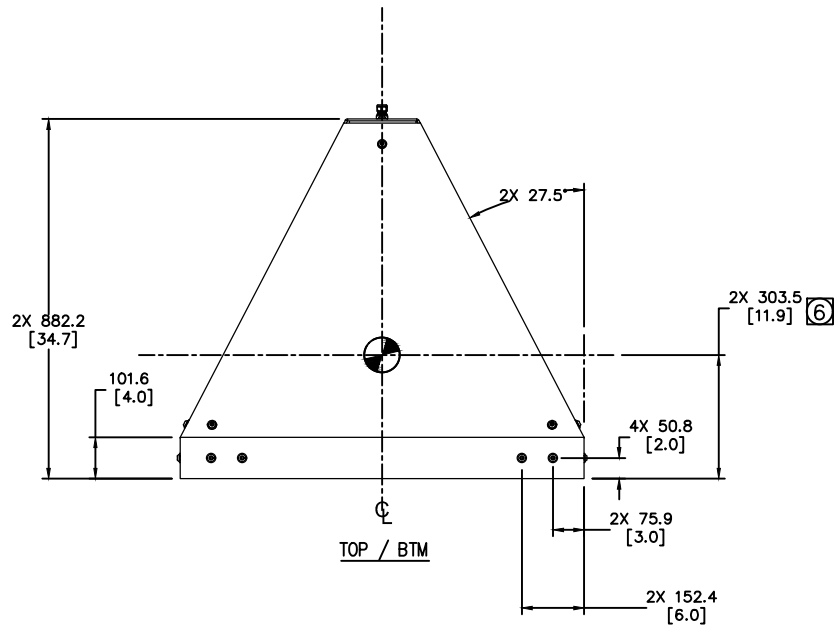


THESE DRAWINGS AND SPECIFICATIONS ARE THE PROPERTY OF JBL INCORPORATED. THEY ARE ISSUED IN STRICT CONFIDENCE AND SHALL NOT BE REPRODUCED OR USED AS THE BASIS FOR MANUFACTURE OR APPARATUS WITHOUT WRITTEN PERMISSION.

ALL MATERIAL SPECIFIED ON THIS DRAWING SHALL COMPLY WITH EUROPEAN DIRECTIVE 2002/95/EC. **RoHS**

REVISIONS						
CHG	LTR	DESCRIPTION	DRFT	D.C	DATE	APPR
---	A	PRELIMINARY RELEASE	TH		10/17/16	MM



7. SUSPENSION POINTS: M10 THREADED SUSPENSIONS POINTS
7X TOP, 7X BTM, 6X LEFT, 6X RIGHT, 4X REAR.

⑥ INDICATED DIMENSIONS ARE TO
CENTER OF GRAVITY (CG)

5. WEIGHT: 204 LBS.

4. COMPONENTS: MF - 2X 2169H, HF - 2X 2432H,

3. ALL DIMENSIONS SHOWN ARE UNFINISHED DIMENSIONS.

2. MATERIALS: COMBINATION OF 5/8" AND 18mm
BIRCH PLYWOOD.

1. FINISH: GRAY FIBERGLASS COATING (WRX), BLACK DURAFLEX,
WHITE AVAILABLE

NOTES: (UNLESS OTHERWISE SPECIFIED)

TOLERANCES (UNLESS OTHERWISE SPECIFIED)

X.XX ± .063 INCH
X.X ± .125 INCH
ANGULAR TOLERANCE OF 0°±30'
FRACTIONAL DIMENSIONS ± 1/32
* DIMENSIONS ARE INCHES
* ALL DIMENSIONS ARE FINISHED DIMENSIONS
* DO NOT SCALE DRAWING



JBL PROFESSIONAL
A Harman International Company
Northridge, California 91329 U.S.A.

TITLE
CUSTOMER DRAWING: PD764i

SIZE A DRAWING NO. 1000294197 REV A

SCALE NTS SHEET 1 OF 1