

4

3

2

1

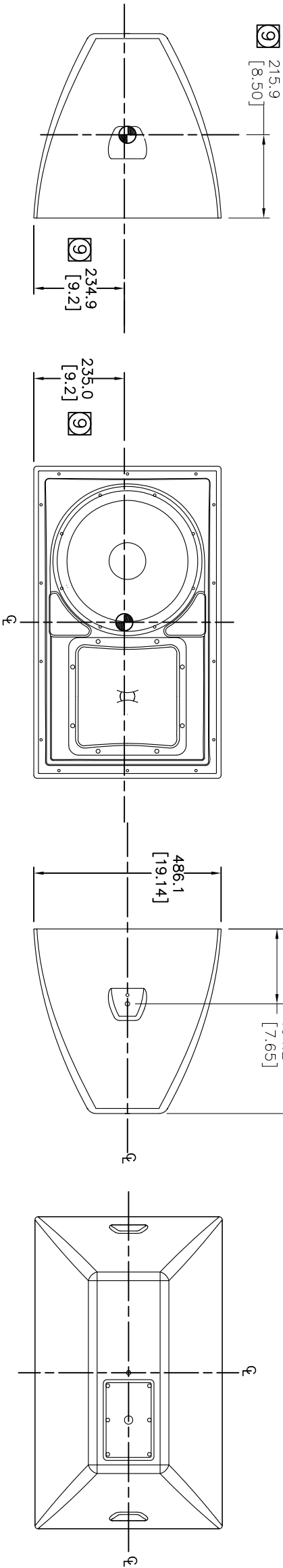
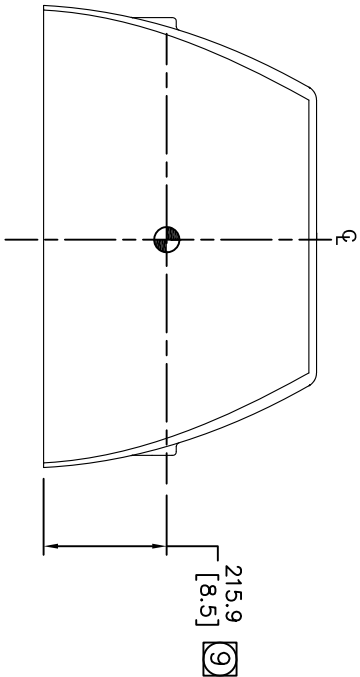
THESE DRAWINGS AND SPECIFICATIONS ARE THE PROPERTY OF JBL, INCORPORATED. THEY ARE ISSUED IN STRICT CONFIDENCE AND SHALL NOT BE REPRODUCED OR USED AS THE BASIS FOR MANUFACTURE OR APPARATUS WITHOUT WRITTEN PERMISSION.		ALL MATERIAL SPECIFIED ON THIS DRAWING SHALL COMPLY WITH EUROPEAN DIRECTIVE 2002/95/EC. <b>RoHS</b>	
AW526	SALES MODEL, AW526, GRAY		
AW526-BK	SALES MODEL, AW526, BLACK		
AW566	SALES MODEL, AW566, GRAY		
AW566-BK	SALES MODEL, AW566, BLACK		
AW595	SALES MODEL, AW595, GRAY		
AW595-BK	SALES MODEL, AW595, BLACK		

REVISIONS				
CHG	LTFR	DESCRIPTION	DEPT	D.C
01592	A	RELEASE TO MARKETING	TH	

DATE

APPR

D



C



INDICATED DIMENSIONS ARE TO CENTER OF GRAVITY (CG)

8. WEIGHT: 28.3 Kg (62.5 LBS).

7. SUSPENSION ATTACHMENT: 2X M10 ON SIDES FOR INCLUDED U-BRACKET, 2X M6 FOR AIMING STABILIZATION, 1X M10 ON BACK FOR SAFETY.

B

6. COMPONENTS: LF – 2265HPL, HF – 2432H.  
5. INPUT CONNECTORS: 6 POSITION TERMINAL STRIP FOR OPERATION AT 8 OHMS, 70V/100W, 70V/200W, OR 70V/400W.  
COVER PLATE INCLUDED, WITH 0.86" (22mm) DIA HOLE FOR GLAND NUT (NOT INCLUDED).

4. ENVIRONMENTAL RATING: IP56 PER IEC 529.

3. GRILLE: 3-LAYER ASSEMBLY OF 16 GA. PERFORATED SS, OPEN CELL FOAM, AND SS MESH. REMOVABLE FOR FIELD SERVICE.

A

2. MATERIALS: HAND-LAMINATED FIBER GLASS.  
1. FINISH: GRAY GELCOAT, COLOR SIMILAR TO RAL GRAY-WHITE 9002 / PANTONE 420 C.  
BLACK ALSO AVAILABLE, COLOR SIMILAR TO RAL JET BLACK 9005 / PANTONE BLACK C.

NOTES: (UNLESS OTHERWISE SPECIFIED)

### TOLERANCES

(UNLESS OTHERWISE SPECIFIED)

XXX ± .063 INCH

XX ± .125 INCH

ANGULAR TOLERANCE OF 0°-30°

FRACTIONAL DIMENSIONS ± 1/32

\* DIMENSIONS ARE INCHES

\* ALL DIMENSIONS ARE FINISHED DIMENSIONS

\* DO NOT SCALE DRAWING



JBL PROFESSIONAL  
A Harman International Company  
Northridge, California 91329 U.S.A.

CUSTOMER DRAWING: AW5XX

DRAWING NO.

1000054114

REV

SCALE

NTS

SHEET 1 OF 2

4

3

2

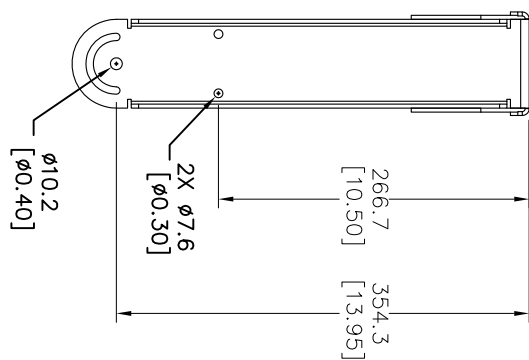
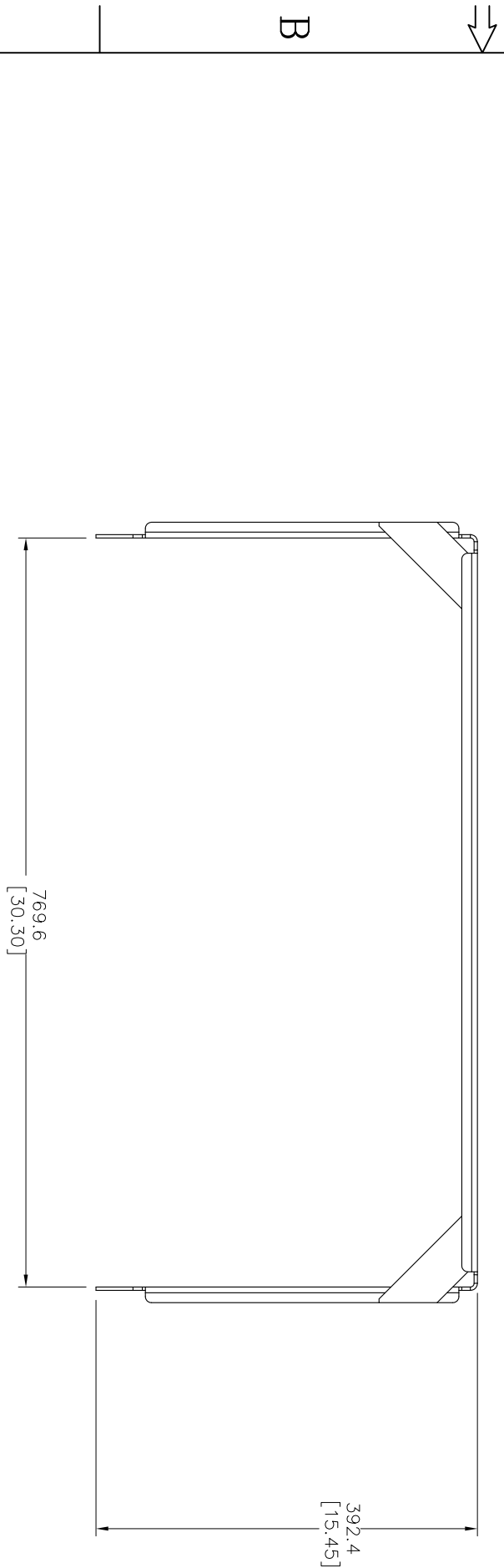
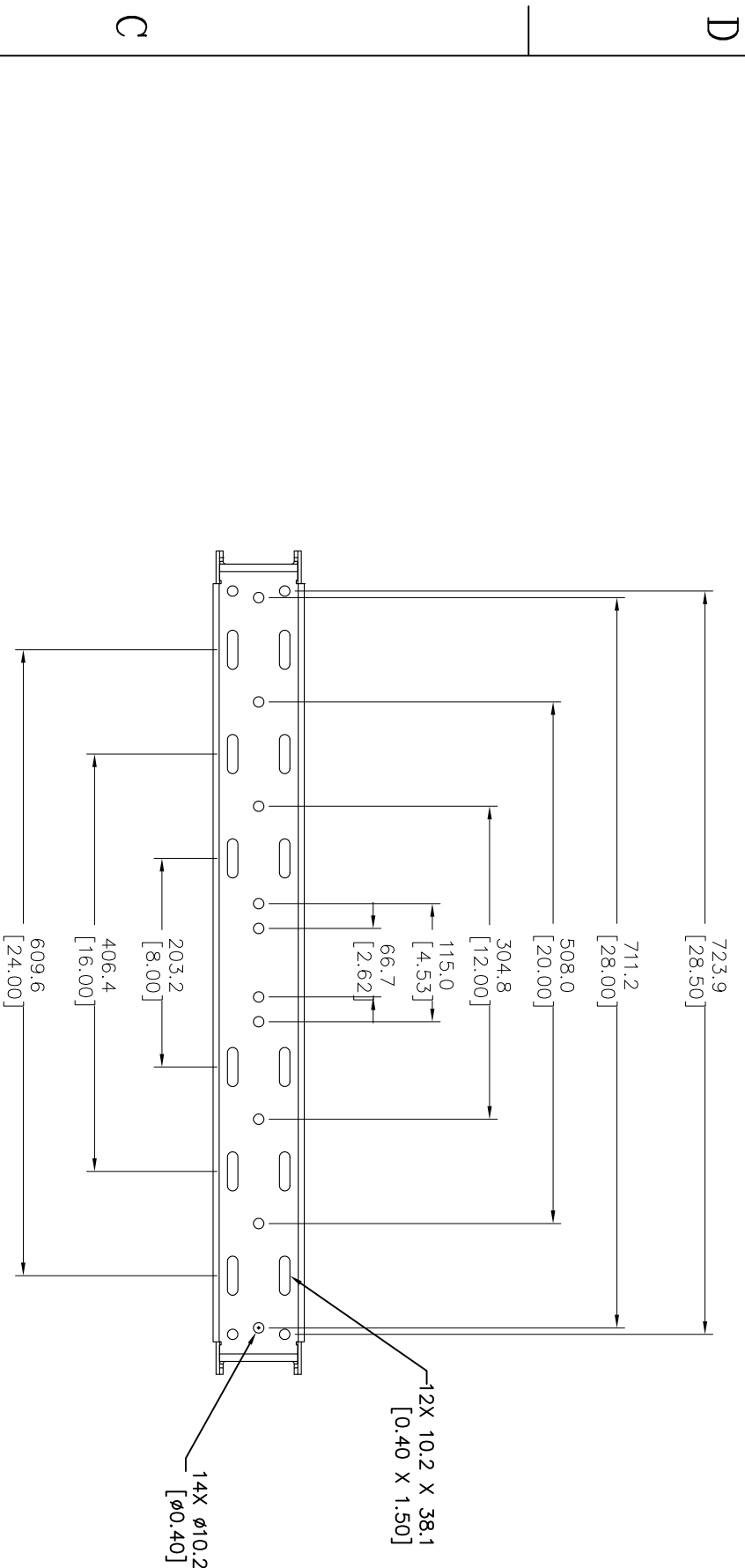
1

THESE DRAWINGS AND SPECIFICATIONS ARE THE PROPERTY OF JBL, INCORPORATED. THEY ARE ISSUED IN STRICT CONFIDENCE AND SHALL NOT BE REPRODUCED OR USED AS THE BASIS FOR MANUFACTURE OR APPARATUS WITHOUT WRITTEN PERMISSION.


ALL MATERIAL SPECIFIED ON THIS DRAWING SHALL COMPLY WITH EUROPEAN DIRECTIVE 2002/95/EC **RoHS**

BRACKET SCALE 2:1

REVISIONS					
CHG	LTR	DESCRIPTION	DWFT	D/C	DATE



NOTES: (UNLESS OTHERWISE SPECIFIED)

		JBL PROFESSIONAL	
A Harman International Company		Northridge, California 91329 U.S.A.	
TITLE			
CUSTOMER DRAWING: AW5XX			

SIZE	DRAWING NO.		REV
A	1000054114		A
SCALE	NTS	SHEET 2	OF 2