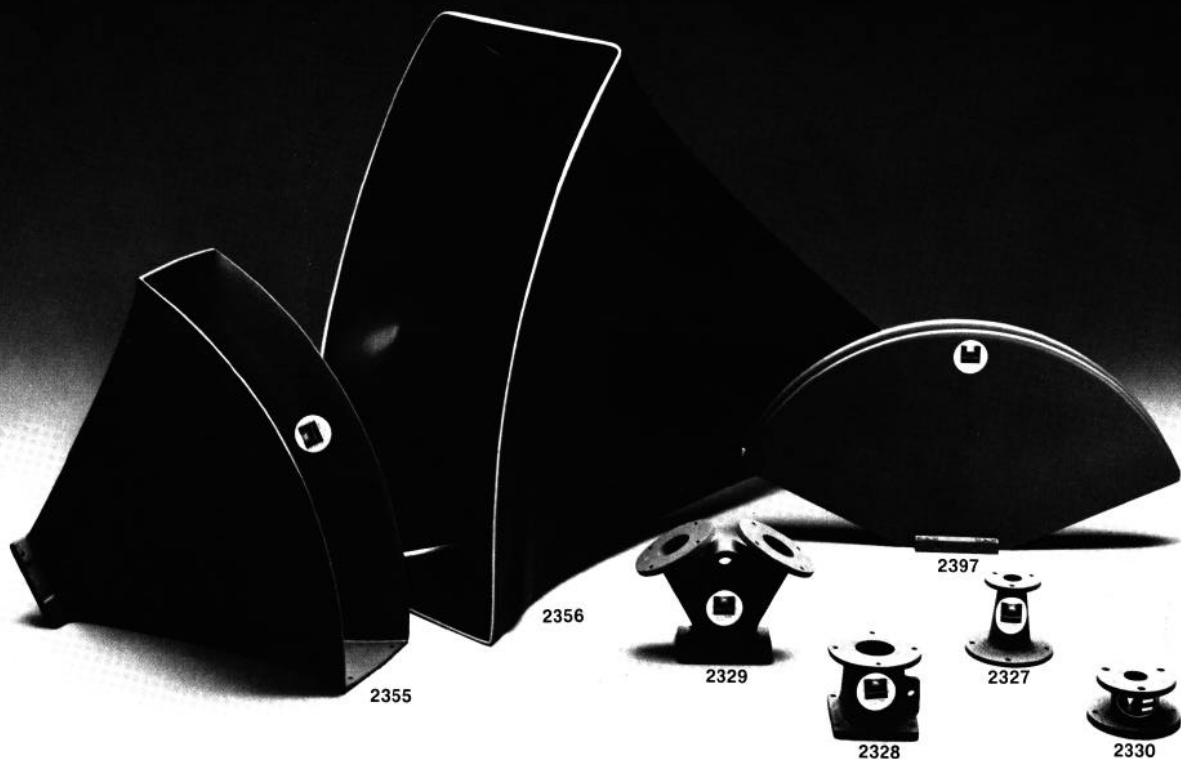


Professional Series Horn Adaptors



2327 Adaptor

The 2327 is tapered to attach a horn with a 2-inch entry diameter to a driver with a 1-inch throat. The adaptor may be used in reverse with some loss above 8 kHz. Length: 105 mm (4 $\frac{1}{8}$ in).

2328 Horn Throat

Required to mount a JBL driver with a 2-inch throat on JBL Model 2350, 2355, or 2397 horns. Length: 98 mm (3 $\frac{7}{8}$ in).

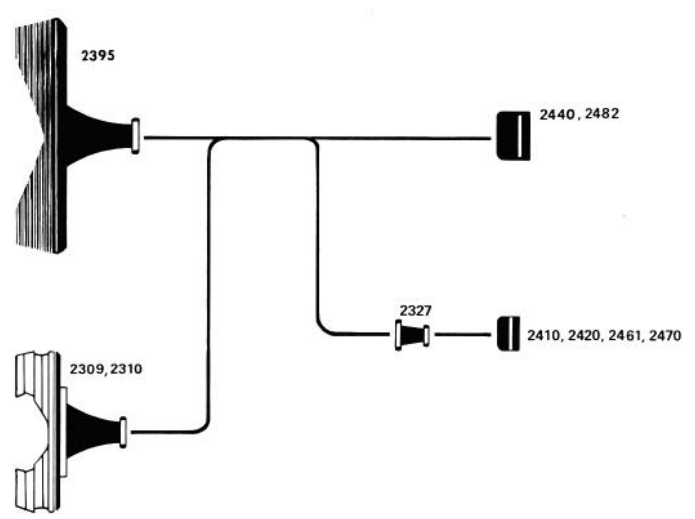
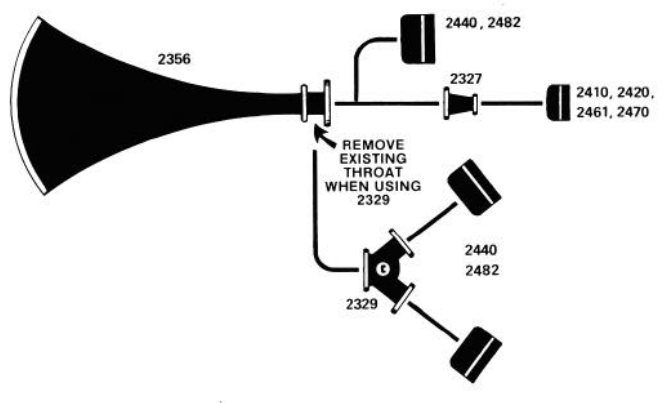
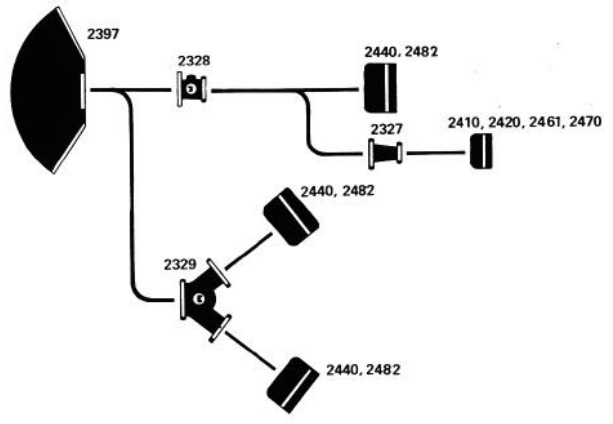
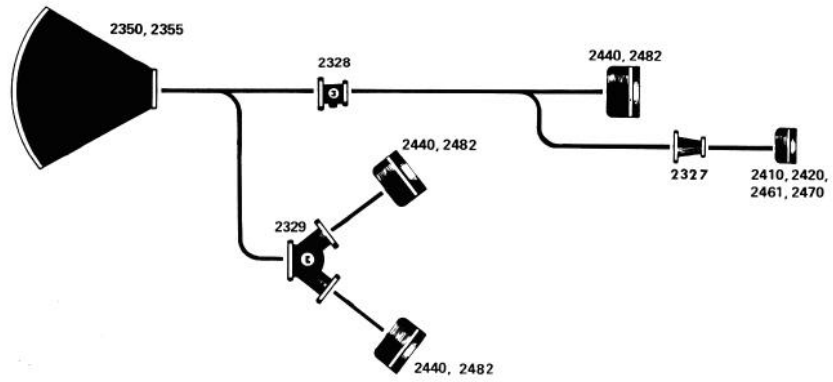
2329 Dual Entry Throat

Required to mount a pair of JBL drivers with 2-inch throats on JBL Model 2350, 2355, 2356, or 2397 horns. Length: 183 mm (7 $\frac{1}{2}$ in).

2330 Adaptor

The 2330 is tapered to adapt a JBL driver with a 2-inch throat to a horn having a 35.6-mm (1.4-inch) entry. Length: 60 mm (2 $\frac{3}{8}$ in).





Professional Division

James B. Lansing Sound, Inc., 8500 Balboa Boulevard, Northridge, California 91329 U.S.A.

PPB2300P/9/78 Printed in U.S.A.