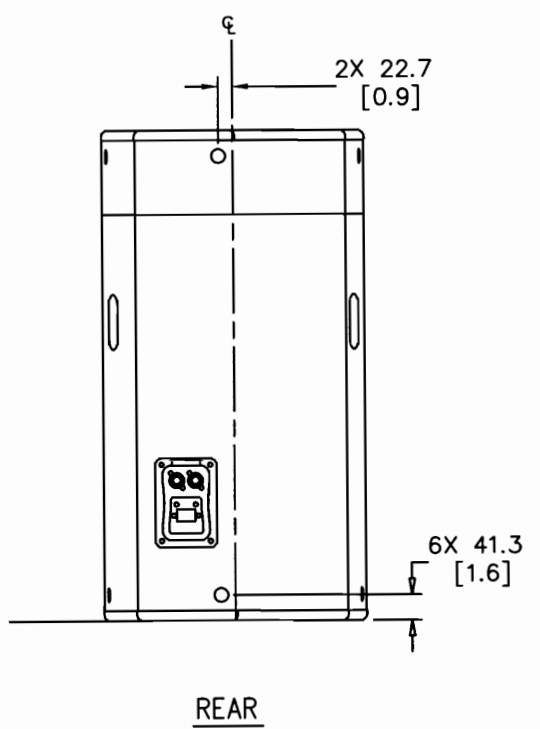
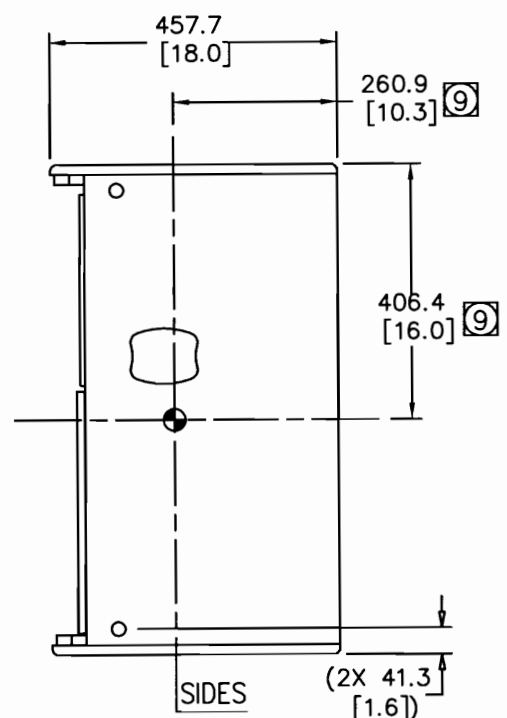
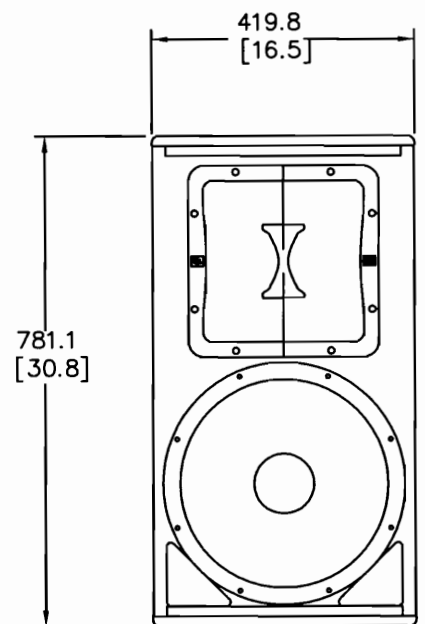
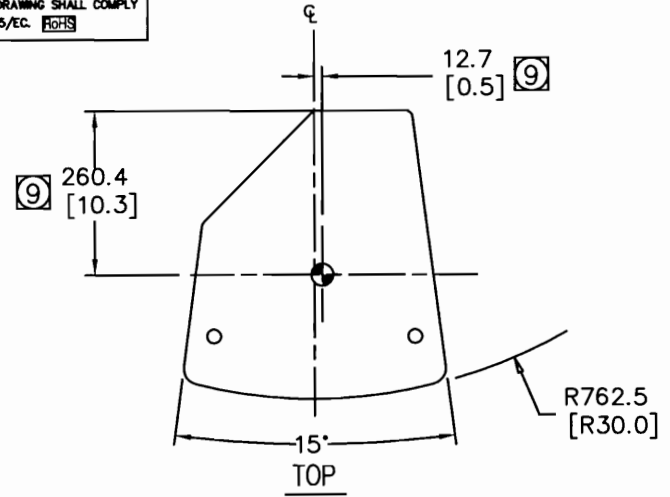


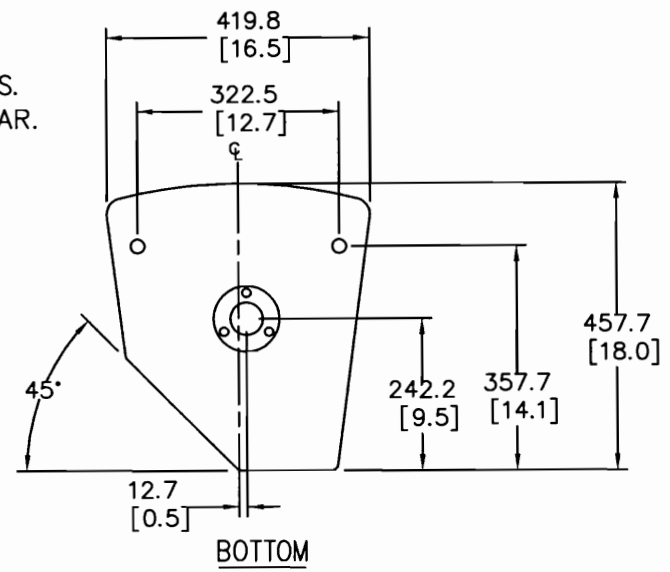
THESE DRAWINGS AND SPECIFICATIONS ARE THE PROPERTY OF JBL INCORPORATED. THEY ARE ISSUED IN STRICT CONFIDENCE AND SHALL NOT BE REPRODUCED OR USED AS THE BASIS FOR MANUFACTURE OR APPARATUS WITHOUT WRITTEN PERMISSION.

ALL MATERIAL SPECIFIED ON THIS DRAWING SHALL COMPLY WITH EUROPEAN DIRECTIVE 2002/95/EC. **RoHS**

REVISIONS						
CHG	LTR	DESCRIPTION	DEPT	D.C	DATE	APPR
40000	A	RELEASE TO MARKETING	TH			
00648	B	REVISE NOTES	TH		11/17/11	CS



- ⑨ INDICATED DIMENSIONS ARE TO CENTER OF GRAVITY (CG) ●
- WEIGHT: 23.8 Kg(52.5 LBS).
 - SUSPENSION POINTS: M10 THREADED SUSPENSION POINTS. 2X TOP, 2X BOTTOM, 2X LEFT, 2X RIGHT, 2X REAR.
 - POLE MOUNT: 35mm (1-3/8") FEMALE SOCKET.
 - COMPONENTS: LF - 265H-1
HF - 2408H-1
 - INPUT CONNECTORS: 2 NEUTRIK NL4 AND 1 BARRIER STRIP WITH 2 TERMINALS, ALL 3 CONNECTED IN PARALLEL.
 - GRILL: 14 GA. PERFORATED CRS, POWDER COATED BLACK.
 - MATERIALS: 15.8 MM BIRCH PLYWOOD.
 - FINISH: BLACK DURAFLEX



TOLERANCES
(UNLESS OTHERWISE SPECIFIED)

XXX ± .063 INCH
XX ± .125 INCH
ANGULAR TOLERANCE OF 0°±30°
FRACTIONAL DIMENSIONS ± 1/32

- DIMENSIONS ARE INCHES
- ALL DIMENSIONS ARE FINISHED DIMENSIONS
- DO NOT SCALE DRAWING

JBL JBL PROFESSIONAL
A Harman International Company
Northridge, California 91329 U.S.A.

TITLE
CUSTOMER DRAWING: MD55

SIZE **A** DRAWING NO. **446234** REV **B**

SCALE **NTS** SHEET **1** OF **1**

NOTES: (UNLESS OTHERWISE SPECIFIED)